

Bonnet Cut Layout

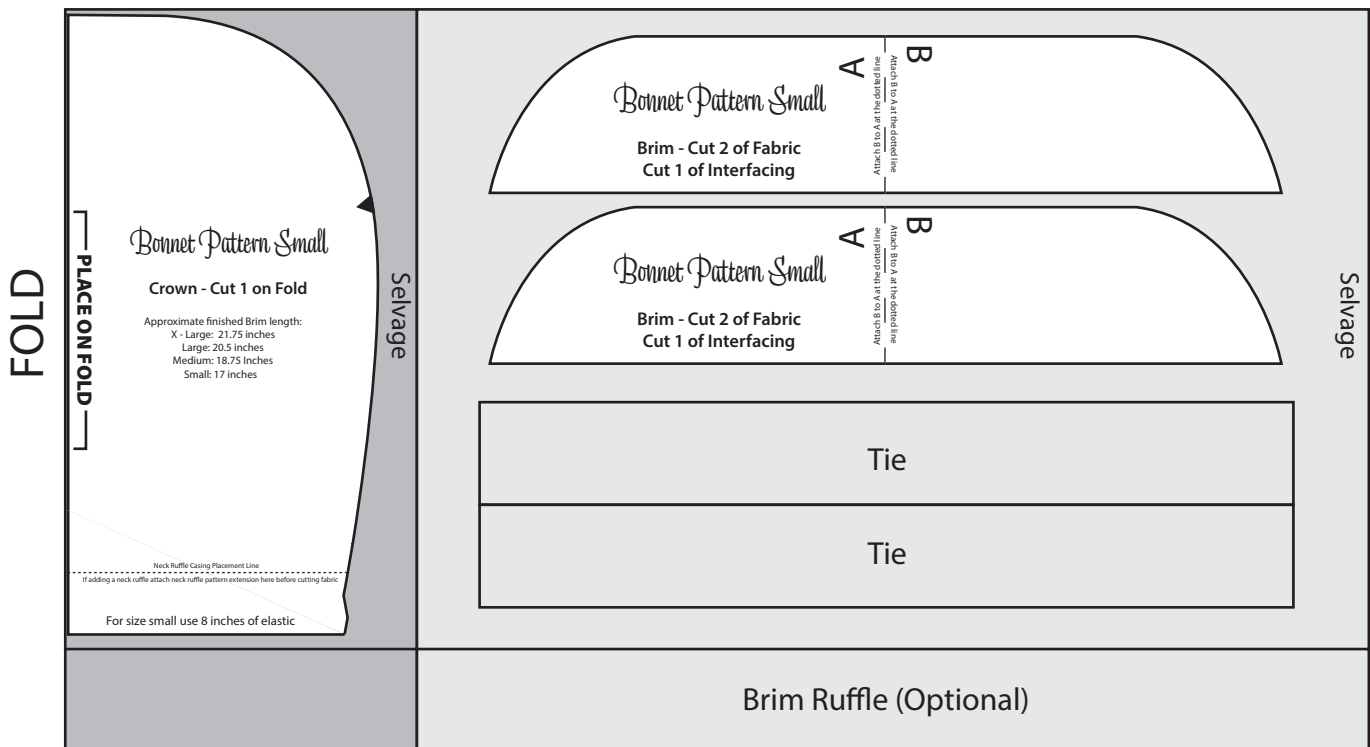
Fold one edge of the fabric over so it is just wide enough for the crown piece.

Place the crown piece on the fold and cut 1. Cut 2 brim pieces.

Below the brim pieces draw 2 rectangles for the straps.

Each strap should be 2 - 3 inches tall and 18 - 24 inches long.

If adding a ruffle to the bonnet brim, cut a strip of fabric 3 - 3.5 inches tall by the width of the fabric (approximately 42 inches).



SIZING - Approximate finished brim length:

X - Large: 21.75 inches (Large Adult)

Large: 20.5 inches (Adult)

Medium: 18.75 Inches (Teen/Pre-Teen)

Small: 17 inches (Youth)

It is best to measure the head of the wearer for the desired brim length prior to selecting the size.

Age estimates are approximate.

Supplies - (Less may be needed for small sizes and/or wide fabrics)

2/3 yard Cotton Fabric (3/4 yard if adding a ruffle to the brim)

2/3 yard Medium Weight Fusible Interfacing

2/3 yard Stabilizer (ex/Additional Interfacing, Duck Canvas, Sew-in Buckram)

Stabilizer is optional but recommended

2/3 yard Fusible Adhesive (ex/ Heat n Bond Lite) - *Optional*

10 inches of 1/4 wide elastic

Coordinating Thread

Bonnet Cut Layout

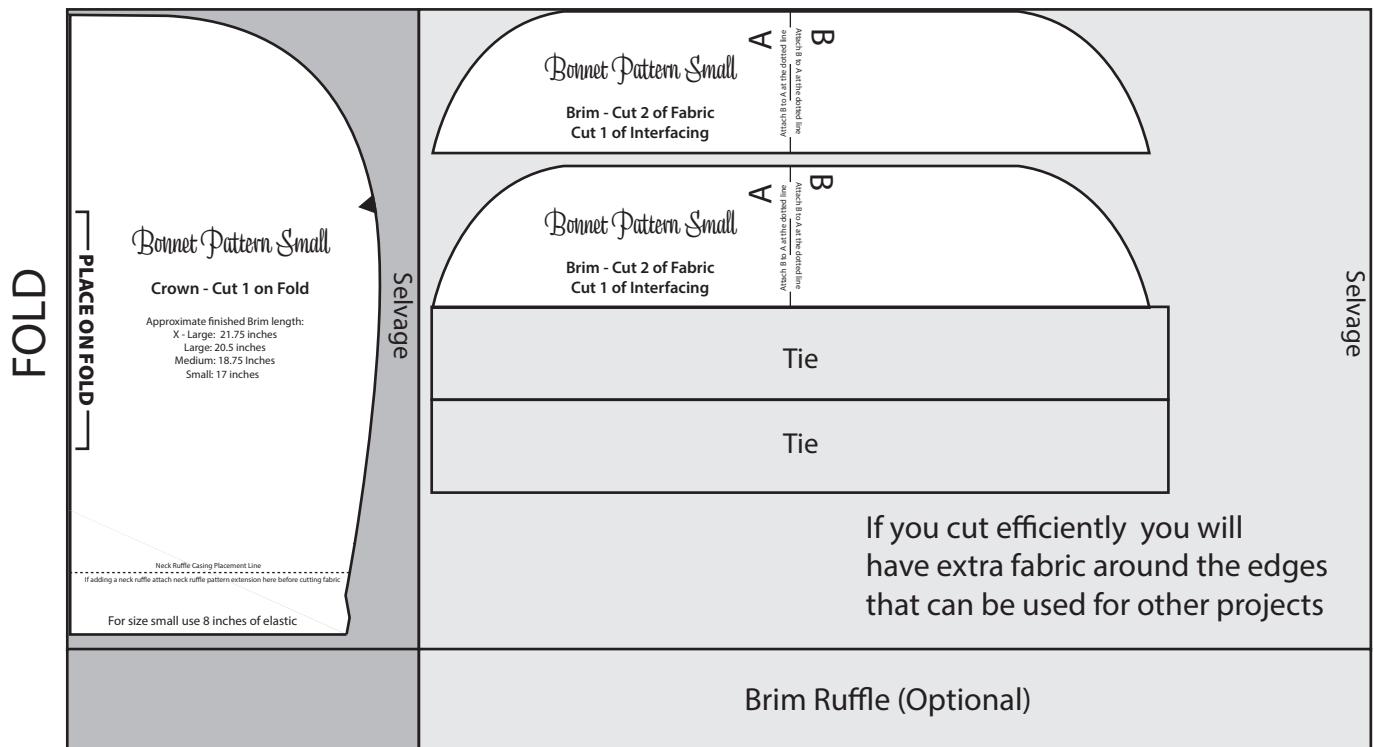
Fold one edge of the fabric over so it is just wide enough for the crown piece.

Place the crown piece on the fold and cut 1. Cut 2 brim pieces.

Below the brim pieces draw 2 rectangles for the straps.

Each strap should be 2 - 3 inches tall and 18 - 24 inches long.

If adding a ruffle to the bonnet brim, cut a strip of fabric 3 - 3.5 inches tall by the width of the fabric (approximately 42 inches).



SIZING - Approximate finished brim length:

X - Large: 21.75 inches (Large Adult)

Large: 20.5 inches (Adult)

Medium: 18.75 Inches (Teen/Pre-Teen)

Small: 17 inches (Youth)

*It is best to measure the head of the wearer for the desired brim length prior to selecting the size.
 Age estimates are approximate.*

Supplies - (Less may be needed for small sizes and/or wide fabrics)

2/3 yard Cotton Fabric (3/4 yard if adding a ruffle to the brim)

2/3 yard Medium Weight Fusible Interfacing

2/3 yard Stabilizer (ex/Additional Interfacing, Duck Canvas, Sew-in Buckram)

Stabilizer is optional but recommended

2/3 yard Fusible Adhesive (ex/ Heat n Bond Lite) - *Optional*

10 inches of 1/4 wide elastic

Coordinating Thread

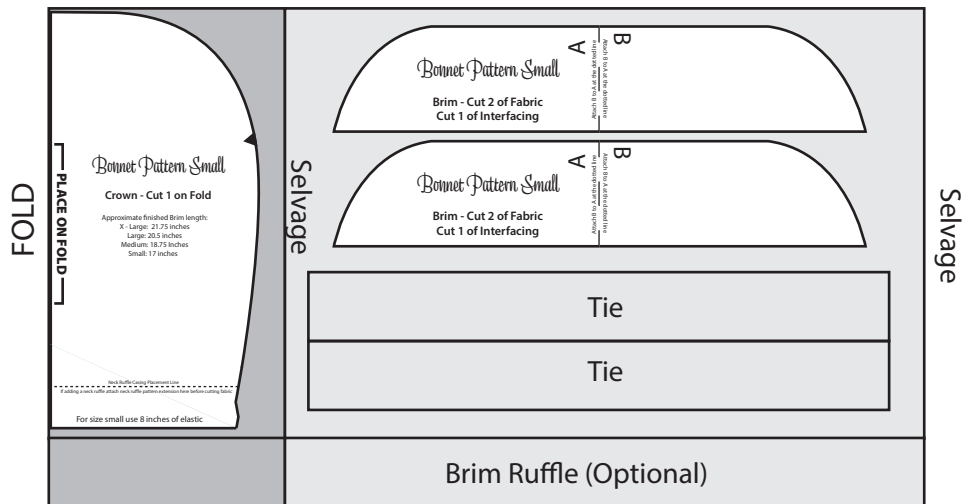
Bonnet Cut Layout

learncreatesew.com

CUT ORDER:

1. Cut Fabric -

- Fold one edge of the fabric over so it is just wide enough for the crown piece. Place the crown piece on the fold and cut 1.
- Cut 2 brim pieces.
- Below the brim pieces draw 2 rectangles for the ties. Each tie should be 2 - 4 inches tall and 18 - 26 inches wide.
- If adding a ruffle to the bonnet brim, cut a strip of fabric 3 - 3.5 inches tall by the width of the fabric (approximately 42 inches).



2. Cut Interfacing

- Cut 2 Brim Pieces from fusible Medium Weight Interfacing.
- Optional: For a smoother lining, trim the Brim pattern piece to the "Lining Trim Line".
 - Trim 1 Interfacing Brim piece and 1 fabric Brim piece to the lining trim line.

3. Cut Stabilizer (Optional but recommended)

Cut the Brim pattern piece down to the Stabilizer Trim Line
Using the trimmed pattern, cut desired stabilizers.
(Example - Fusible Web & Duck Canvas)

SIZING - Approximate finished brim length:

X - Large: 21.75 inches (Adult)
Large: 20.5 inches (Adult)
Medium: 18.75 Inches (Teen/Pre-Teen)
Small: 17 inches (Youth)

Age estimates are approximate.
Measure to find the best size for the desired fit.

Supplies - (Less may be needed for small sizes and/or wide fabrics)

2/3 yard Cotton Fabric (3/4 yard if adding a ruffle to the brim)
2/3 yard Medium Weight Fusible Interfacing
2/3 yard Stabilizer (Optional but recommended)
10 inches of 1/4 wide elastic
Coordinating Thread
(Example Stabilizers - Duck Canvas with or without fusible web, Sew-In Buckram, Additional Medium Weight Interfacing)