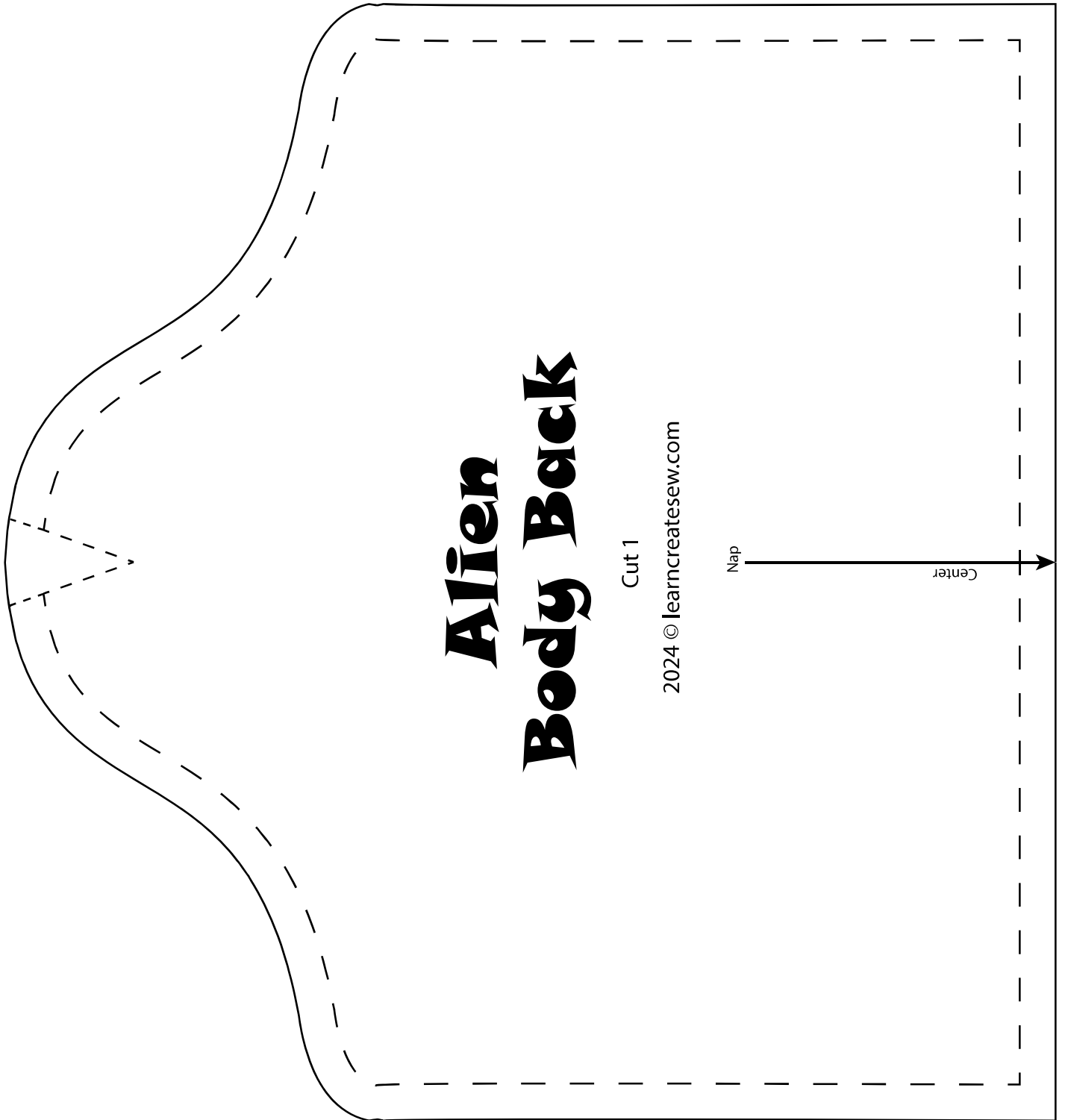


Alien Plush Pattern



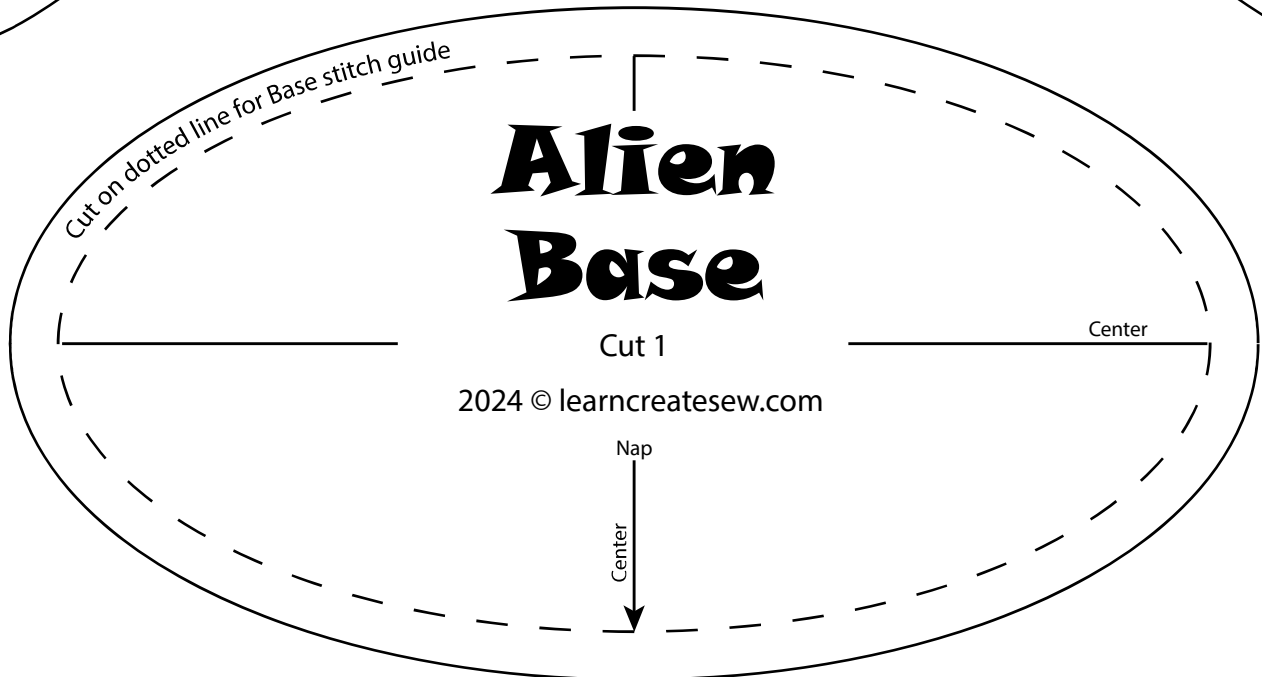
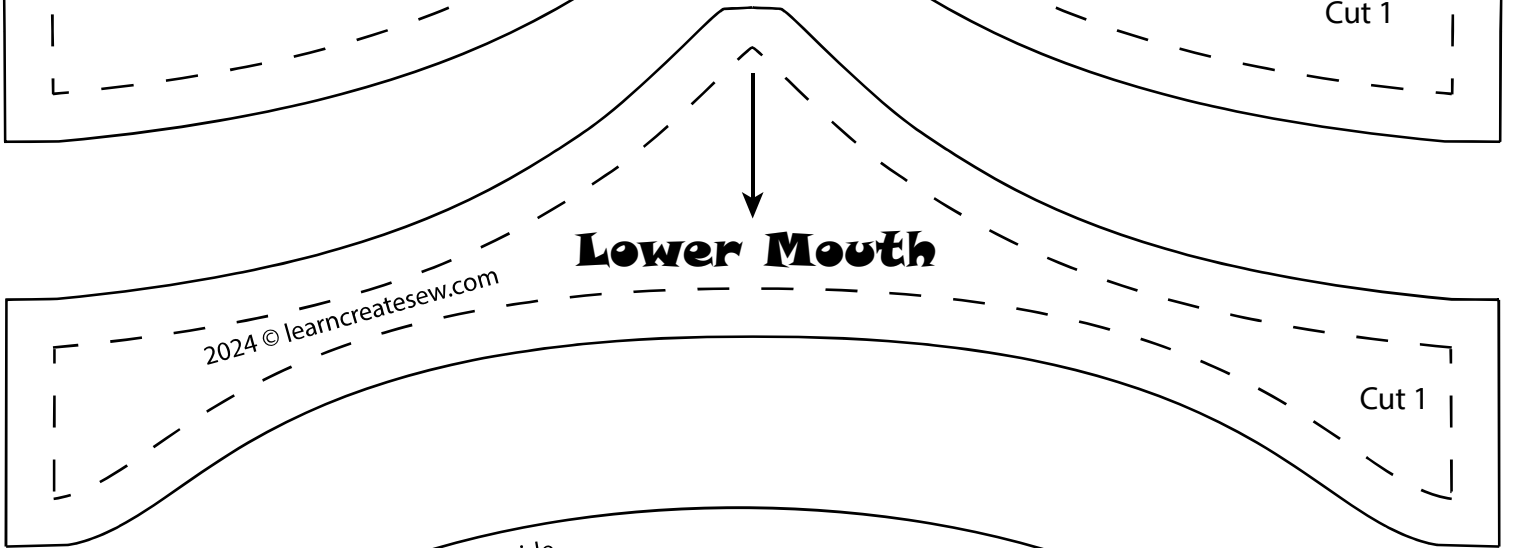
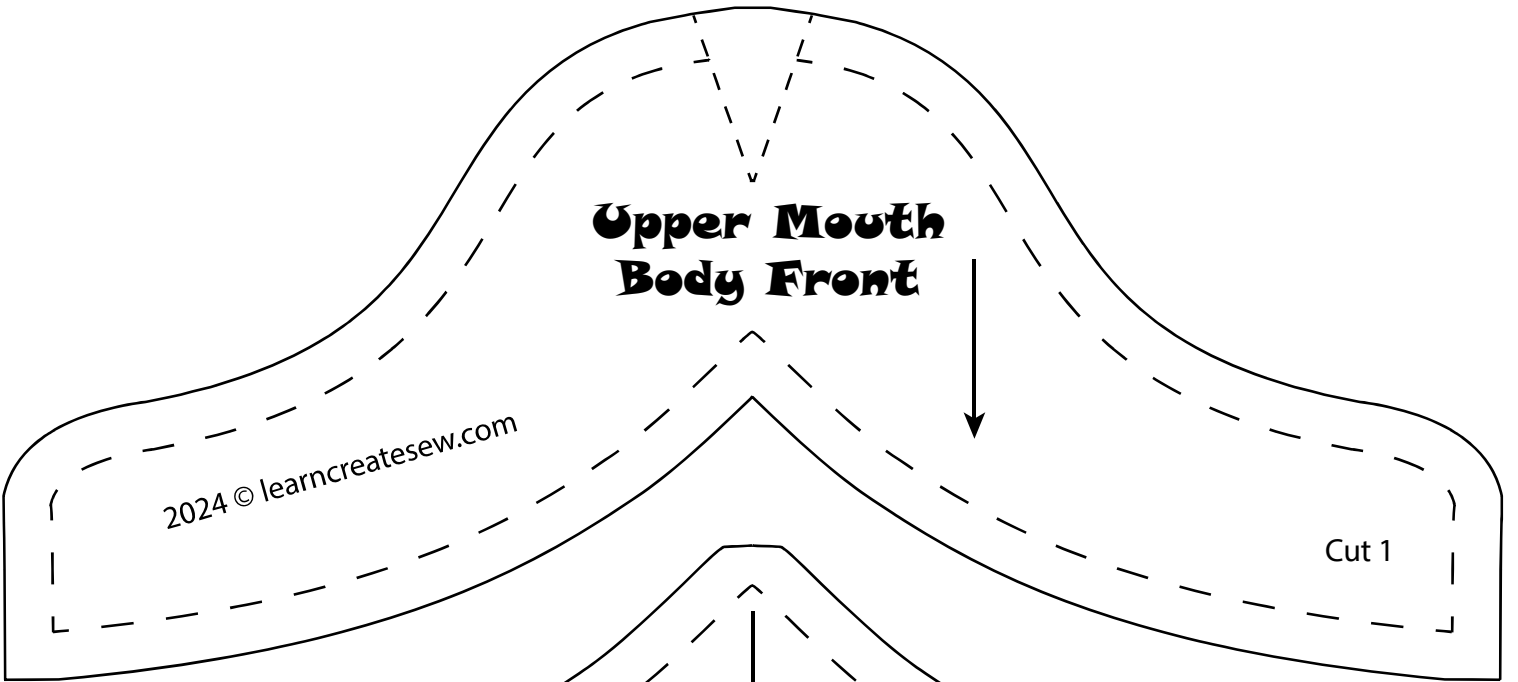
**Alien
Body Back**

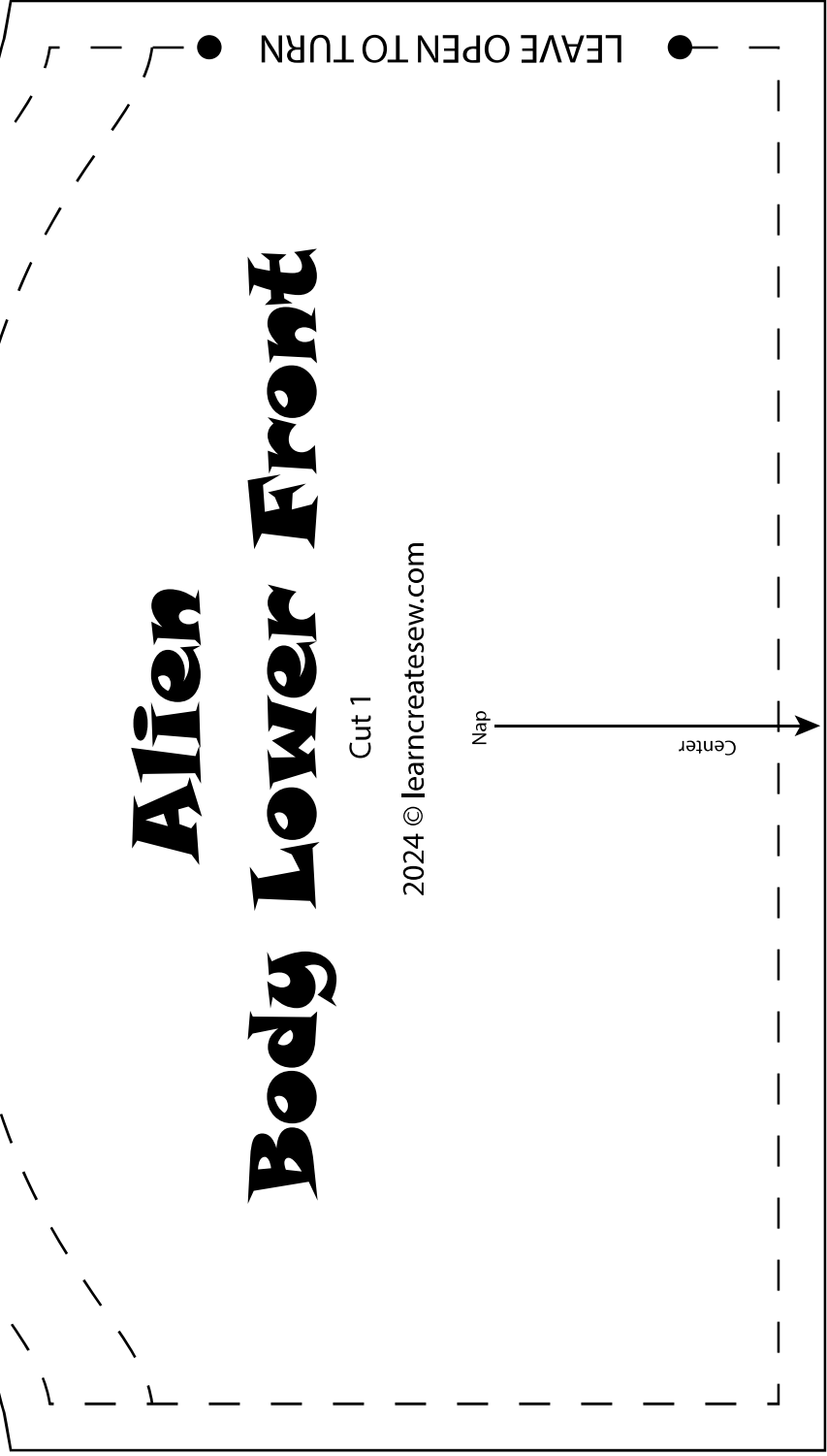
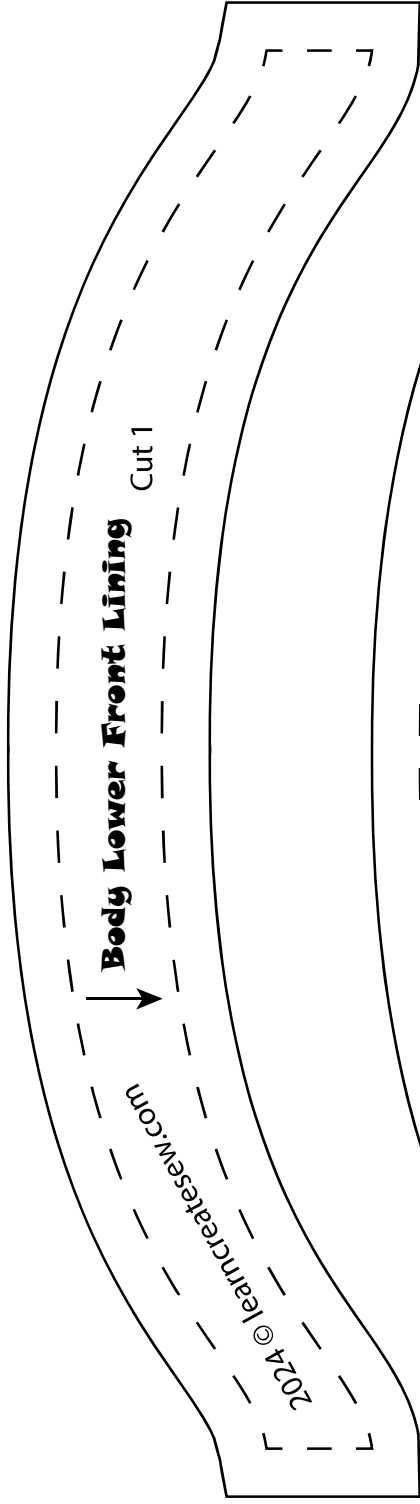
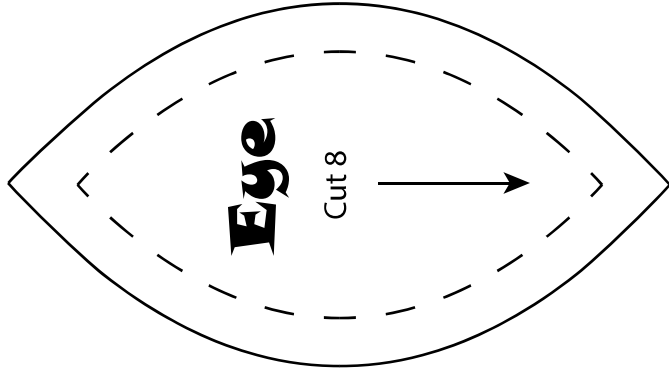
Cut 1

2024 © learncreatesew.com

Nap

Center

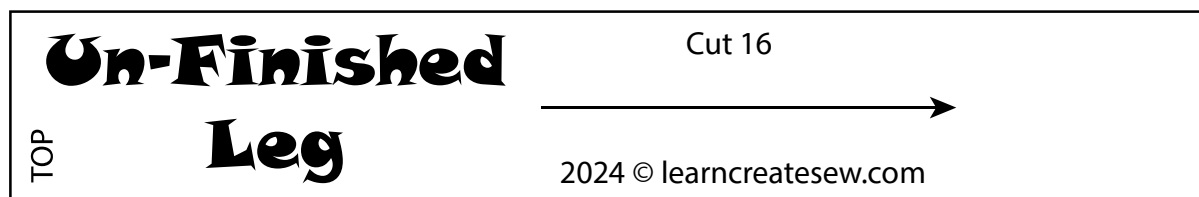
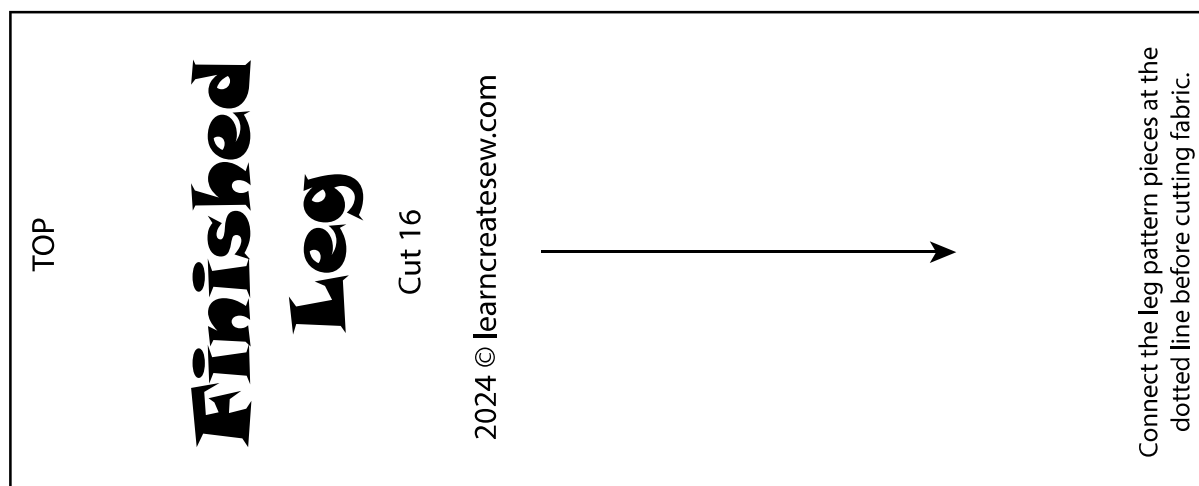
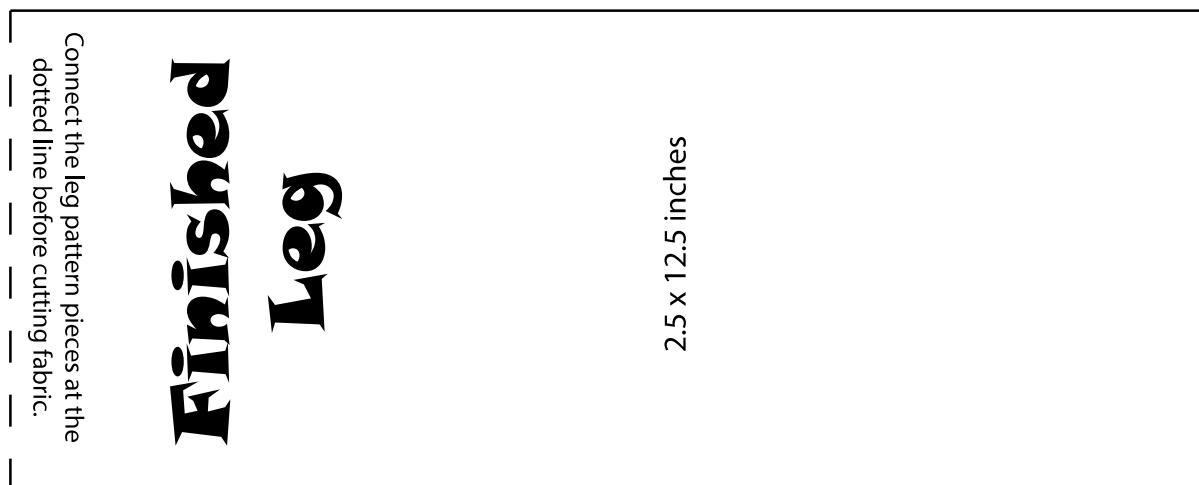




CHOOSE LEG TYPE:

FINISHED: Select the Finished Leg pattern if your fabric frays or sheds, you don't want to see raw edges, or you want bulkier legs. These legs will be sewn into tubes. As a result, the construction of the finished legs takes longer and uses more fabric.

UN-FINISHED: Select the Un-Finished Leg pattern if your fabric does not fray and/or you want to see raw edges. These legs are thinner and are not sewn.



Connect the leg pattern pieces at the dotted line before cutting fabric.

Antenna

Cut 1 (Optional)

2024 © learncreatesew.com



Connect the leg pattern pieces at the dotted line before cutting fabric.

Connect the antenna pattern pieces at the dotted line before cutting fabric.

Antenna

2.5 x 15 inches

Alien Cut Layout

Finished plush measures approximately inches tall (not including antenna)
2024 © learncreatesew.com

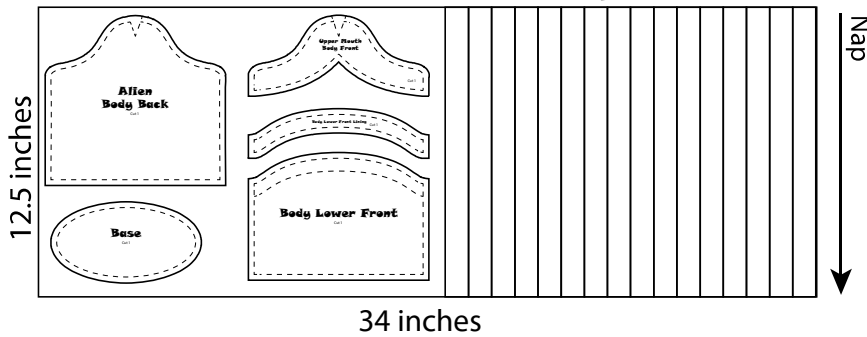
Body & Finished Legs (Option 1)

There are 16 leg pieces, each measuring 2.5 x 12.5 inches

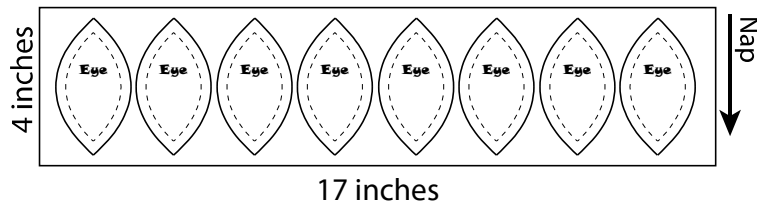


Body & Un-Finished Legs (Option 2)

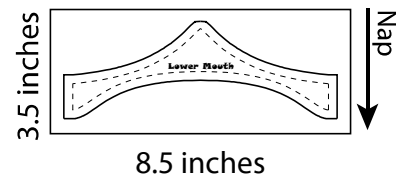
There are 16 leg pieces, each measuring 1 x 12.5 inches



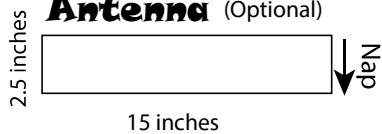
Eyes



Lower Mouth (Black)



Antenna (Optional)



Supplies

- Body Fabric - Minky, Fleece, or Faux Fur
- Accent Fabric (Eyes, Lower Mouth, Antenna)
 - Minky or Fleece
- 1 or 2 Pipe Cleaners or 12 inches of Wire
- 2 Pom Poms (0.75 - 1 inch diameter)
- Two 12 mm buttons
- Polyfil
- Coordinating Thread
- Hot glue (optional)
- 2 Rubber Wire Caps (Optional)