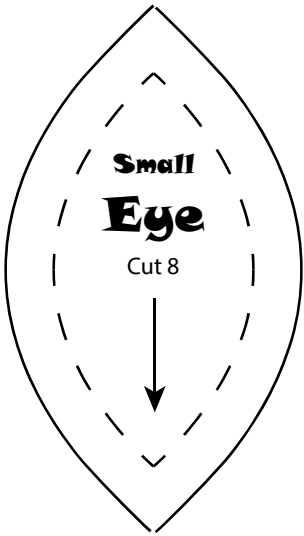
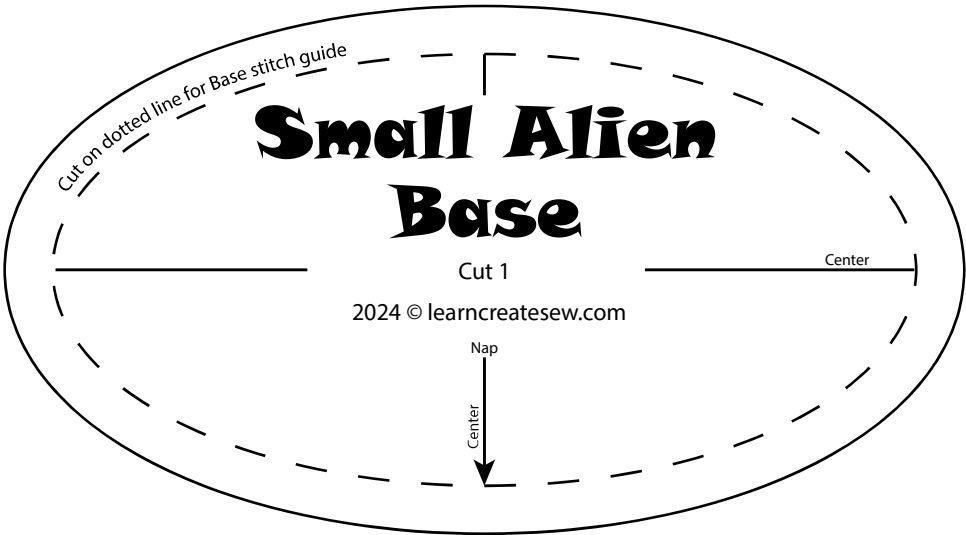
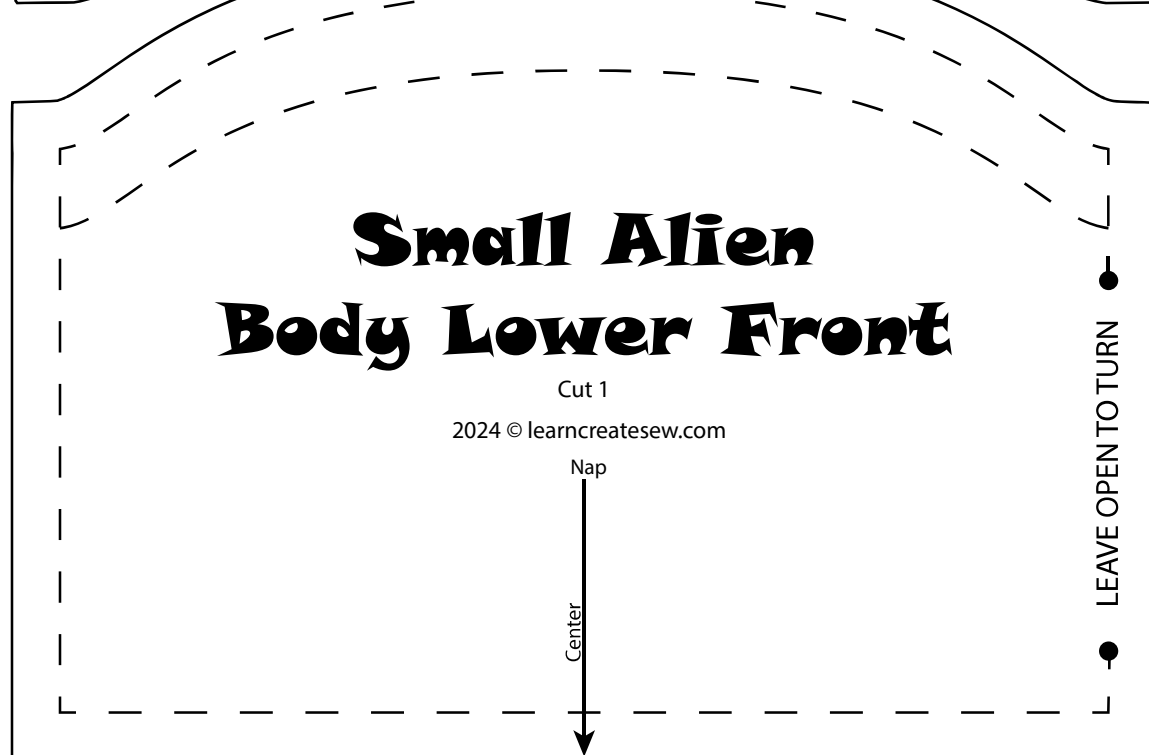
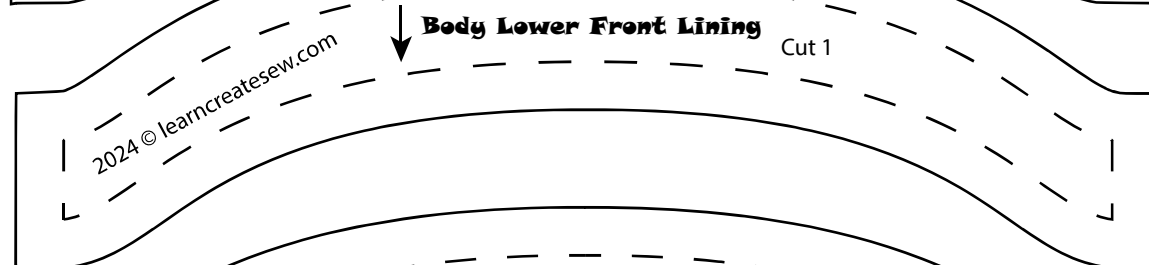
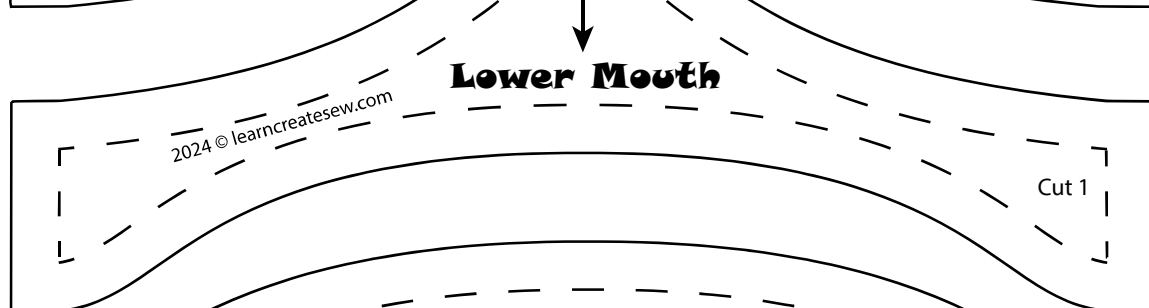
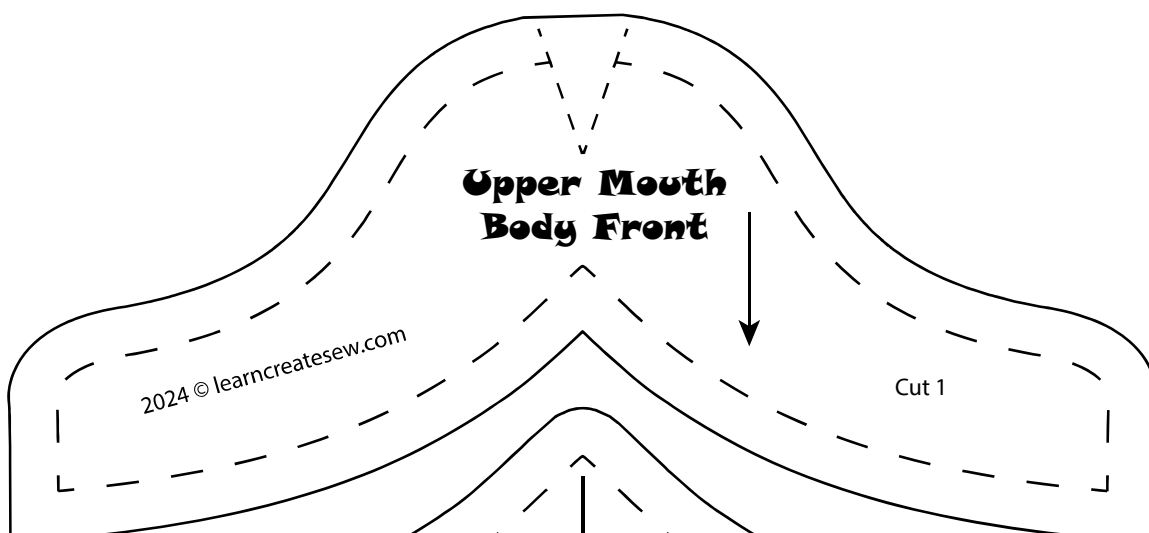
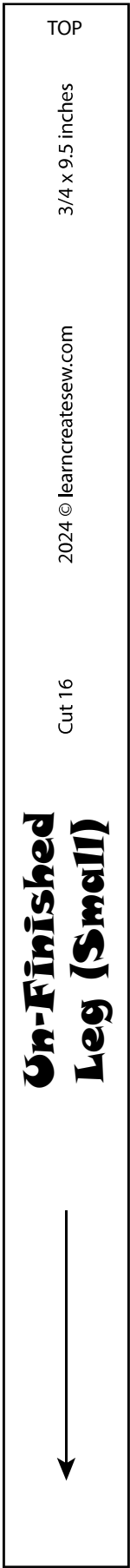
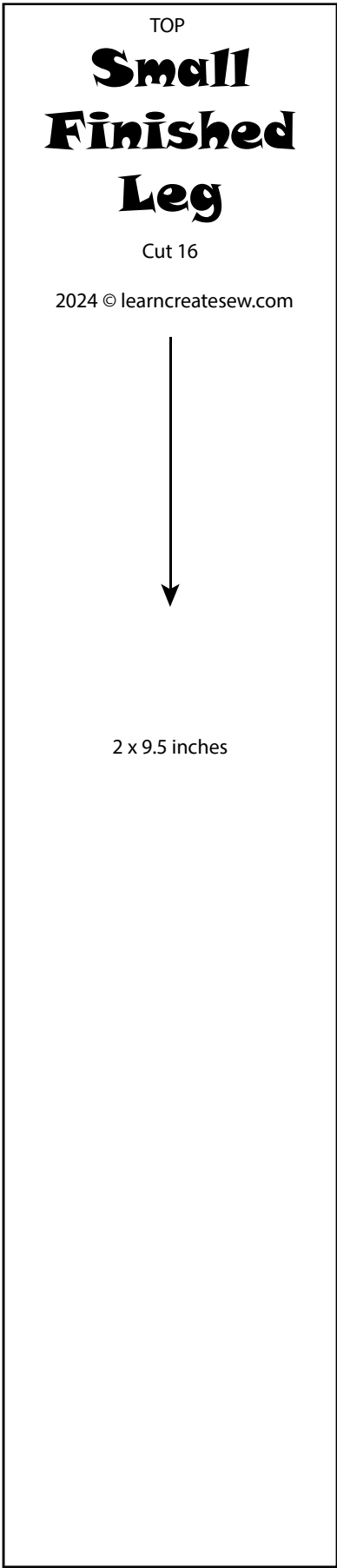


Small Alien Plush Pattern



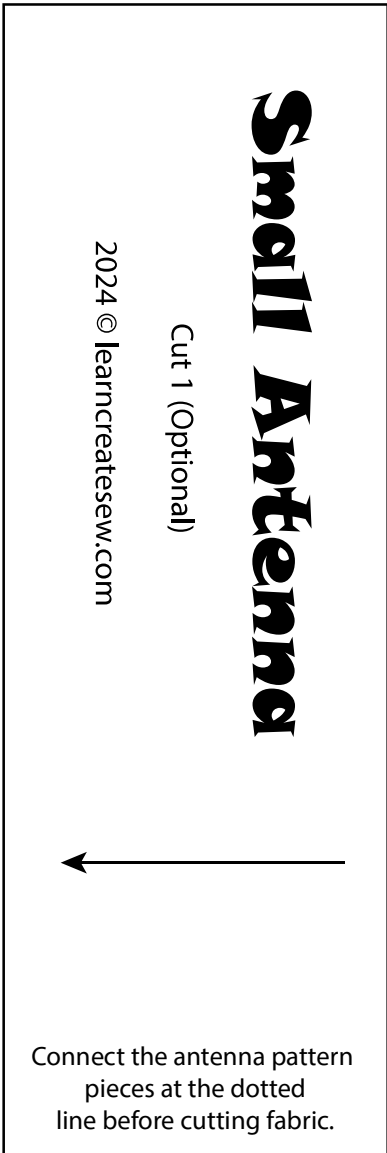




CHOOSE LEG TYPE:

FINISHED: Select the Finished Leg pattern if your fabric frays or sheds, you don't want to see raw edges, or you want bulkier legs. Each leg will be sewn into a tube. As a result, the construction of the finished legs takes longer and uses more fabric.

UN-FINISHED: Select the Un-Finished Leg pattern if your fabric does not fray and/or you want to see raw edges. These legs are thinner and are not sewn.

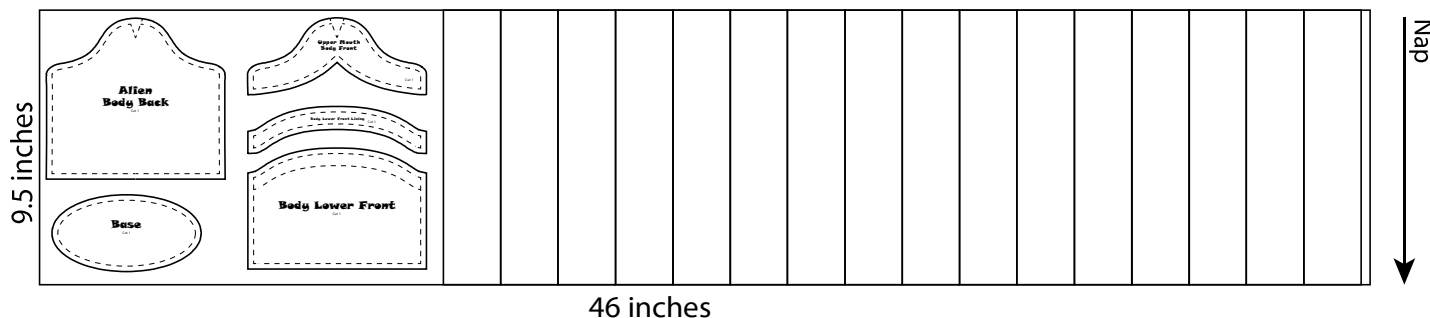


Small Alien Cut Layout

Finished plush measures approximately inches tall (not including antenna)
2024 © learncreatesew.com

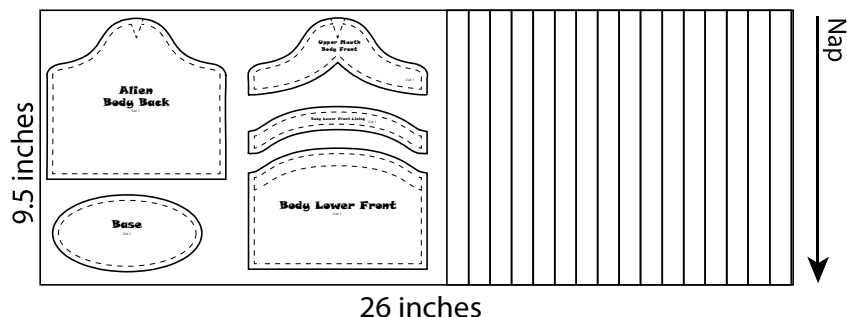
Body & Finished Legs (Option 1)

There are 16 leg pieces, each measuring 2 x 9.5 inches

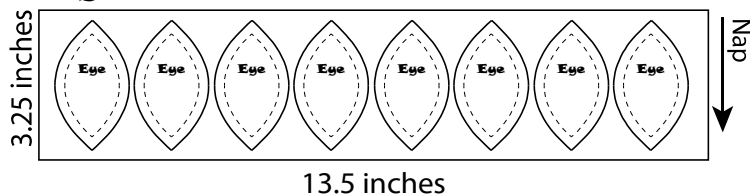


Body & Un-Finished Legs (Option 2)

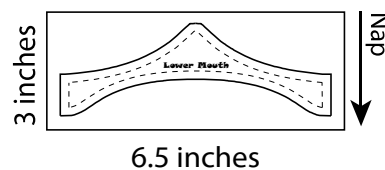
There are 16 leg pieces, each measuring 0.75 x 9.5 inches



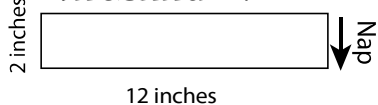
Eyes



Lower Mouth (Black)



Antenna (Optional)



Supplies

- Body Fabric - Minky, Fleece, or Faux Fur
- Accent Fabric (Eyes, Lower Mouth, Antenna)
 - Minky or Fleece
- 1 or 2 Pipe Cleaners or 9 inches of Wire
- 2 Pom Poms (0.5 - 0.75 inch diameter)
- Two 9 mm buttons
- Polyfil
- Coordinating Thread
- Hot glue (optional)
- 2 Wire Caps (Optional)