



Pig Plush Instructions

SUPPLIES:

6 x 50 inches Fleece for Body
6 x 14 inches of Fleece for Feet, Ears, and Nose
2 Safety Eyes (I used 12 mm eyes for the large plush and 10 mm eyes for the small plush)
Embroidery Floss
Polyfil
Optional: Scrap Felt & Button
Coordinating Thread

TOOLS:

Sewing Machine (Optional) This project could be done entirely by hand if desired.
Hand needles
Machine Needle & Size: 12 - 14 universal or ball point
Walking Foot (Optional)
Marking Tools: air or heat erase markers (Optional)

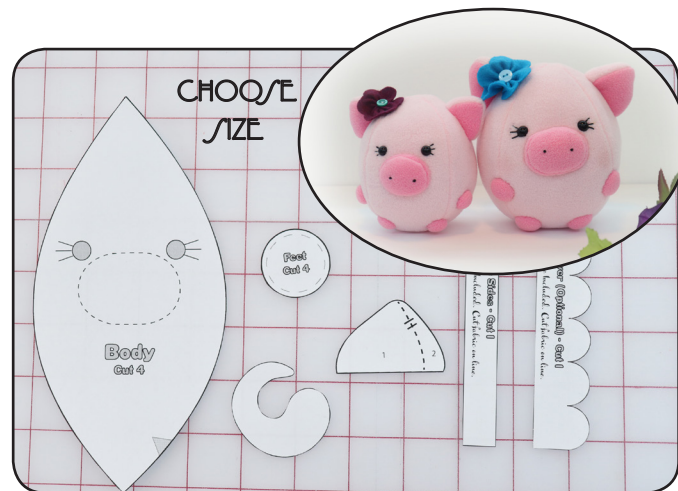
WORKING WITH FLEECE:

- Increase your stitch length to 3 - 4 depending on the bulkiness of your fabric. The thicker the fabric, the longer the stitch length. I used stitch length 3.5
- Don't iron. Fleece can melt under the heat. Simply finger press.
- Clips work great to hold together bulky sections.
- If you notice skipped stitches, try using a ball point needle.
- A walking foot helps prevent rippling and stretching of the fabric, but it takes time to get used to if you don't normally use a walking foot.
- Since fleece stretches. Try not to pull the fabric when sewing.
- Start stitches \approx 1/4 inch away from the fabric's edge so it isn't caught in the needle plate.

STEP 1

CHOOSE THE SIZE OF YOUR PLUSH.

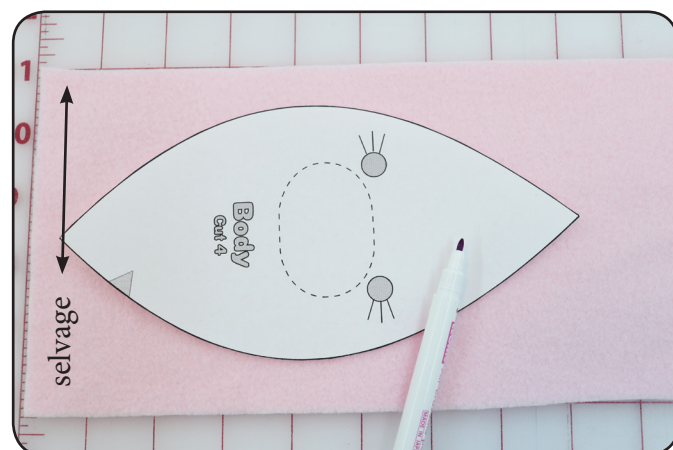
The small plush stands 5 - 6 inches tall depending on the stretch of your fabric and how much you stuff it. The regular size plush stands 7 - 8 inches tall. Cut out your pattern pieces on the SOLID lines using paper scissors. You will be tracing your pattern pieces. I used an air erase marker, but this may not work for you if you aren't completing the project in one sitting. You could also use a heat erase marker or other marking tool. (Test fabric marking pens on your fabric first.) I've even used coordinating colored small tip sharpies. These work well on the WRONG side of the fabric as long as you don't let it bleed to much. See STEP 2 before continuing.



STEP 2

Trace your body piece ONCE onto the WRONG side of the fabric. Be sure to keep the pattern piece at least 1/2 inch from the edges of the fabric. Make sure your pieces are not on the selvage.

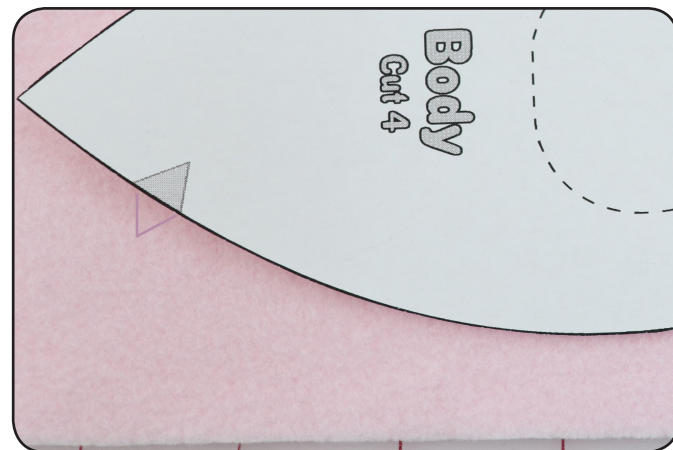
Tip: To ensure you have enough fabric you may want to layout all of your pieces following the instructions in steps 2 - 10 before tracing and cutting.



STEP 3

Mark the placement of the triangle on the fabric. You can do this by drawing a line or a reflection of the triangle pointing away from the one on the pattern piece.

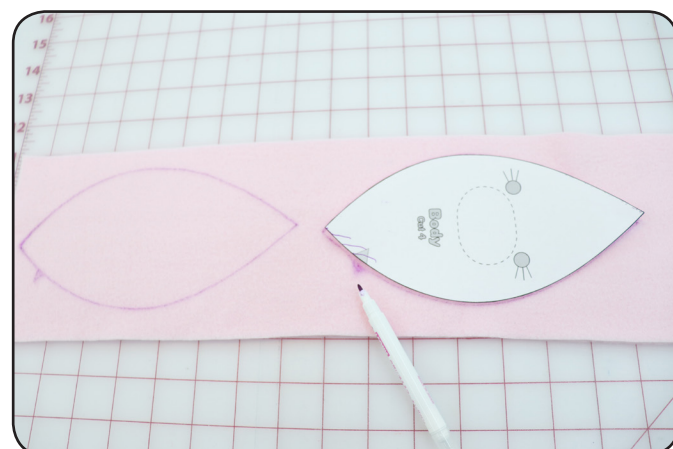
This will help you keep your pieces arranged properly when sewing. The bottom of the pattern is slightly wider than the top and we don't want to accidentally place a piece upside down.



STEP 4

Trace the body piece 3 more times in the same manner. You should have a total of 4 full body pieces drawn.

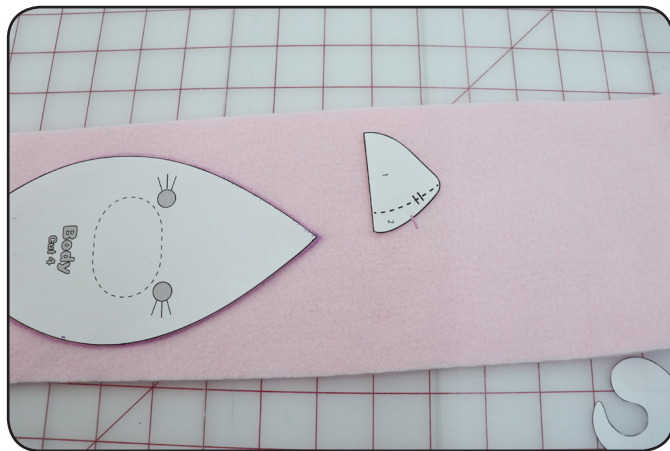
Leave at least 1/2 inch of space between pieces and away from the edges.



STEP 5

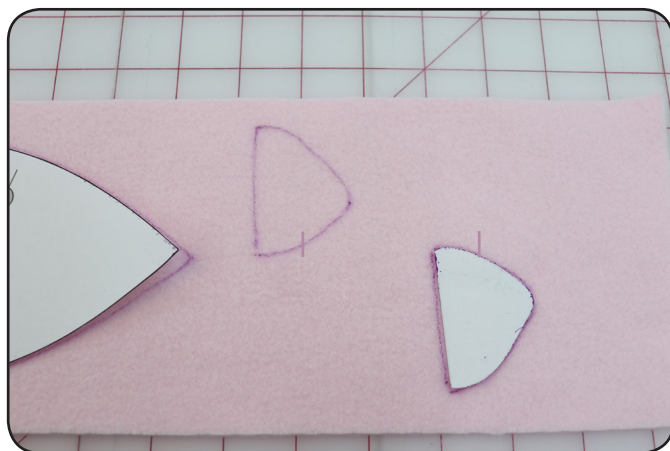
Trace the full ear piece once onto the same colored fabric as the body.
Leave at least 1/2 inch between pieces.

I like to mark which side is the interior of the ear.
The side next to the number 2.



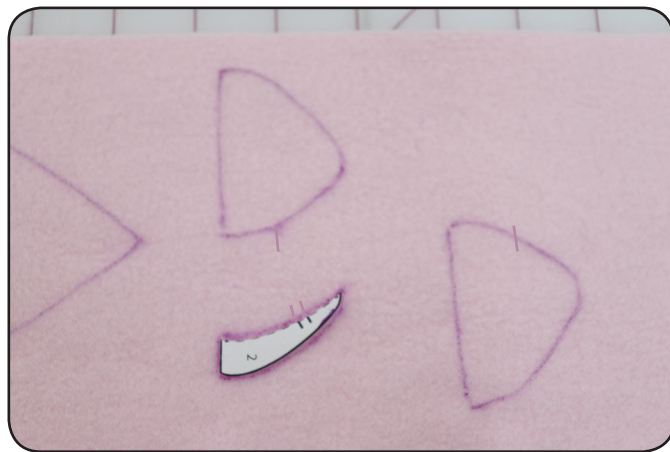
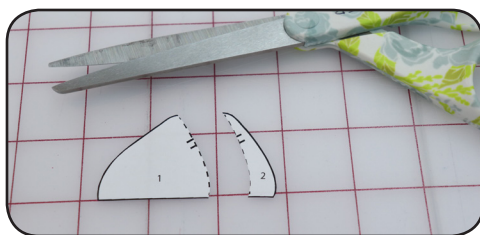
STEP 6

Flip the ear piece over so you are looking at the wrong side of the pattern piece.
Trace again.
Mark the interior of the ear as before.
This will give you a left and right ear. This is called cutting one and one reversed. You will need to do this with all pieces that have a left and right side.



STEP 7

Cut your ear pattern piece on the dotted lines.
Trace piece 2 onto the fabric. Be sure to mark the dash lines.



STEP 8

Flip the pattern piece over so that you are looking at the wrong side of the pattern piece. Trace ear piece 2 again.
This will give you a left and right ear.
Again, this is called cutting one and one reversed.



STEP 9

The lines that you have traced are the **SEW** lines. That means that is where you will **SEW**. Because of this, you do **NOT** cut on these lines. You will cut out your pieces 1/4 inch away from your drawn lines.

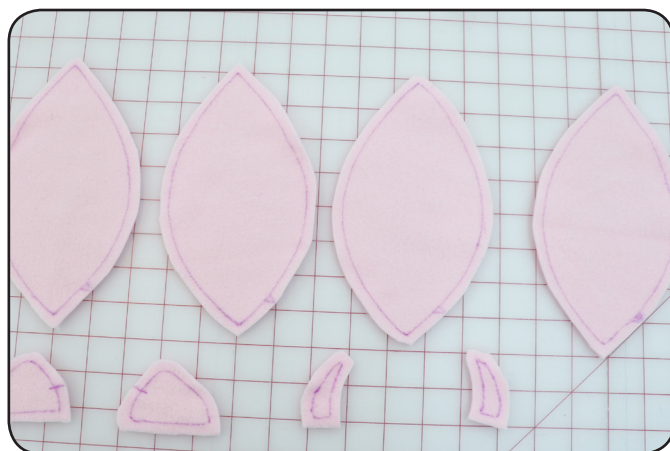
This is why you have to leave space between your pieces.

Cut out all of the pieces you traced on your main fabric. Leave a 1/4 inch seam allowance.



STEP 10

You should have your pieces cut out.

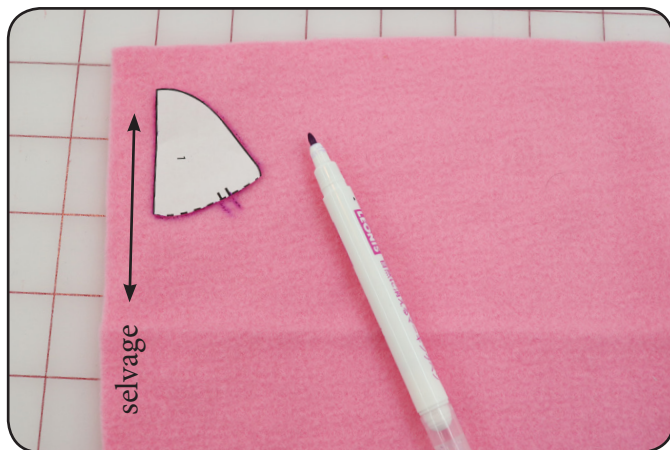


STEP 11

It is time to trace the inside of the ear which is ear pattern piece 1.

use your contrasting fabric for the inside of the ears, nose and feet.

Mark the side of the ear with the two dash lines. This will help you know where to place piece 2 later when you are sewing..



STEP 12

Flip the pattern piece over and trace it again so you have a left and right ear.



STEP 13

Trace the tail pattern piece onto the same fabric.
Don't forget to leave a half inch between pieces.



STEP 14

Trace the nose side piece onto the fabric.
This is the only piece that you will cut out on the lines you draw. The seam allowance is already included with the pattern piece.
It is best if the length of the nose side piece runs the direction of greatest stretch. On the fleece I purchase I have found this is perpendicular to the selvage.



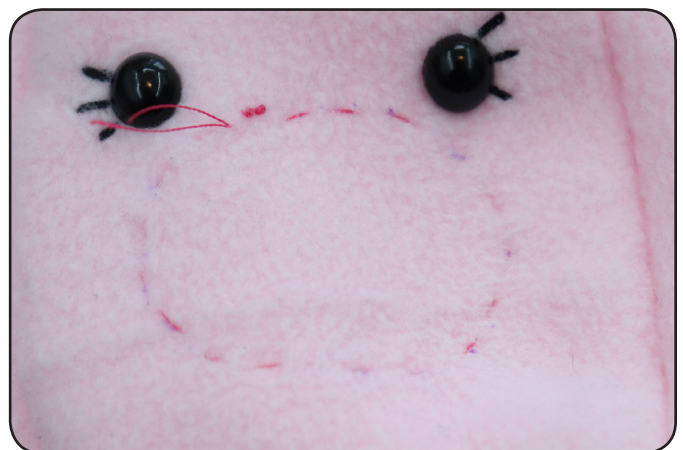
STEP 15

Trace the nose. Remember to leave space between pieces.
It may also be a good idea to mark the location of the nostrils now.
Be sure that your marks won't show on the final project. If you don't want to mark them with a pen or marking tool, you can use thread. (See Step 16)



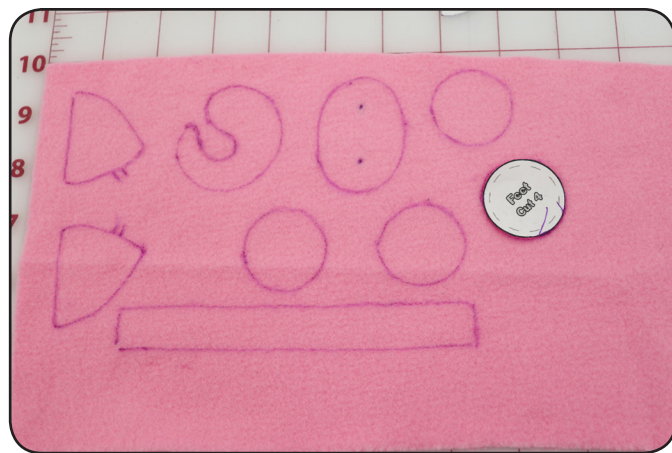
STEP 16

To mark placement with thread, get a contrasting color thread. Thread a thin hand needle.
Use basting stitches to mark the placement. Basting stitches are long stitches meant to be removed. (Stitches about 1/2 cm long are good for this project.) Remember, you want these stitches to be removed later so if you tie a knot make sure it is not attached to the fabric.
The image shows thread basting marking the placement of the nose on the body. You could mark nostril placement from Step 15 similarly with just one or two stitches.



STEP 17

Trace 4 circle feet pieces onto the fabric.
Cut out the nose side piece (the long skinny rectangle) **ONLY** on the line. Cut out **ALL** other pieces leaving a 1/4 inch seam allowance as you did the body pieces.



STEP 18

Trace the face placement onto the body. Select the piece you want to be the front of the plush. Cut out the nose and eyes of the pattern piece (I like to cut out the nose and then use a hole punch for the center of the eyes.) Mark the edge of the nose and the center of the eyes onto the **RIGHT** side your fabric.

Always test your fabric to make sure the marker won't be seen on your final project. (I use air/heat erase pens. Note: These can vanish over time or due to the heat of your hands, so you have to take care while sewing.) If you don't have fabric pens, or if you don't want to mark with pen you can use thread and basting stitches (long hand stitches) to mark placement.. See step 16.



STEP 19

Select two body pieces.

Take note of where the marks for the bottom of the pieces are. When sewing you want to make sure you align the bottom with the bottom, and top with the top.



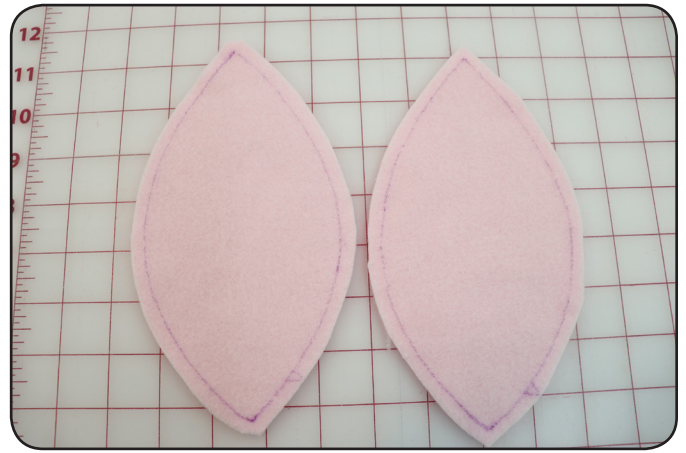
STEP 20

Lay two body pieces together with right sides touching. Stitch the two pieces together along one of the sides. This means from point to point (along one curved edge of the football shape). Follow your drawn line as a guide.



STEP 21

Take your other two body pieces. Take note of the markings that indicate the bottom of the pieces.



STEP 22

Place the pieces right sides together. Sew along one edge as in step 20.



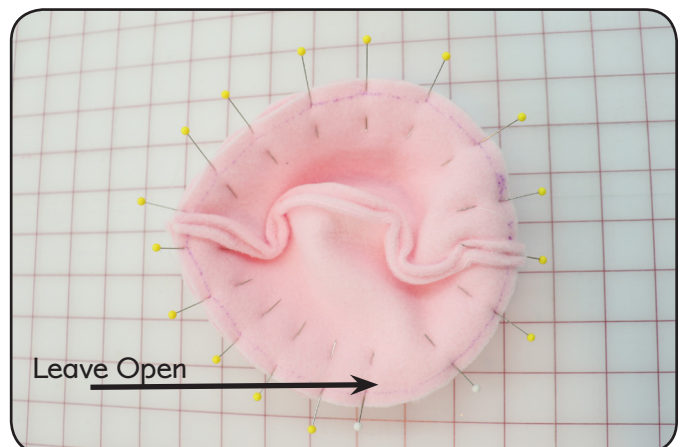
STEP 23

When you open up these pieces they should look bowl like. You should have two pieces that look similar to this.



STEP 24

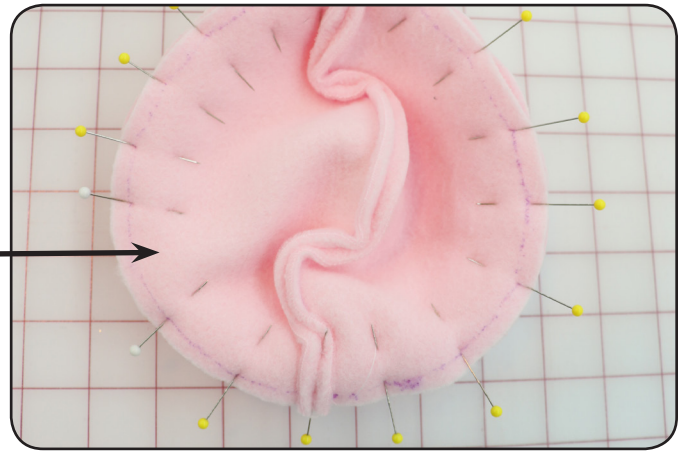
Open up the two bowl like pieces. Place them right sides together. Align the seam allowances at the top and bottom. Take note of the markings that indicate the bottom of the pieces and make sure they are placed correctly. Pin around the edges. The edges should begin to look like a circle. You are going to sew around the circle, sewing the two bowl pieces together, following your guideline. Leave an opening about 3 inches long on the center back.



STEP 25

Carefully stitch around the circle. Don't forget to leave your opening.

Leave Open



STEP 26

Turn the body right side out.



STEP 27

If you have not already done so, mark where you would like to place the eyes and nose.

Reminder: Make sure to use a marker that vanishes, or be sure all markings will be hidden. Test your fabric first.

You can mark the placement with pins or thread if you prefer.



STEP 28

This is an example of how you could mark with pins on a plush that has already been stuffed. While it doesn't leave marks it can be tricky as your thread can get caught on the pins when sewing.

I usually prefer vanishing markers but you do always run the risk of the marks being visible on your final project. Thread is the safest way to mark placement (shown in Step 16).



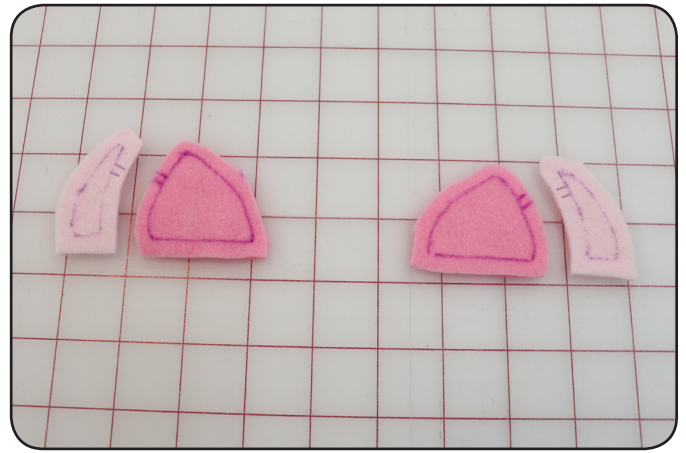
STEP 29

It's time to sew the front of the ears together.

First, find all of the pieces.

Arrange them so you can see the markings.

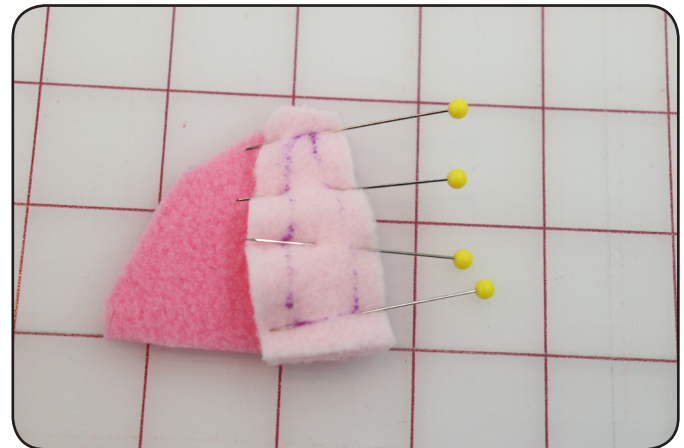
The dashed lines from the pattern pieces should be facing each other.



STEP 30

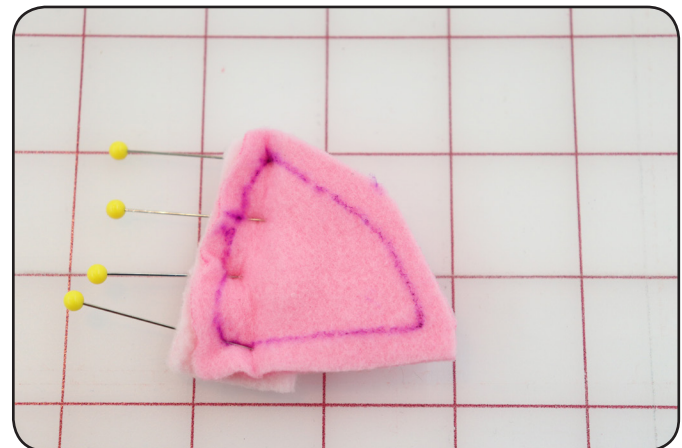
Place pieces 1 and 2 of the ear right sides together aligning the side with dashes. Stitch along that edge following the line.

TIP: I like to pin the two pieces together by first lining up the corners. I stick a pin through the corner of one piece so it comes through exactly at the corner of the other piece and pin. I repeat with the other corner. and then pin in the middle.



STEP 31

This is what it looks like from the other side.



STEP 32

Once the two pieces are joined they should look like this.

Repeat for the other ear.



STEP 33

Place a full ear piece, the back of the ear, right side down on top of your assembled pieces 1-2. Right sides should be touching. Sew the two together around the sides.

Leave the bottom open.

Repeat for the other ear.



STEP 34

It should look similar to this. (Fox ear shown in image.)



STEP 35

Turn the ears right side out.

It may be necessary to trim the seam allowance at the tip of the ear just a bit to help it lay better. Be careful not to cut your stitches. I would not trim any shorter than 1/8 inch.

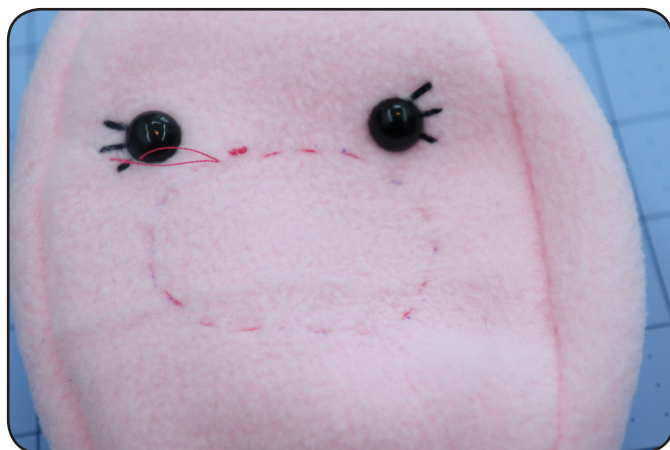
Repeat for the other ear.



STEP 36

Put your safety eyes on the face. Make VERY VERY small holes for the eye posts to slide through. If the hole is too big the eyes may fall out, so make the smallest hole possible. Be sure you have the correct position before making the holes. I like to mark it with an air erase pen.

You can use embroidery floss to decorate the face as well. I added eyelashes. As you sew be careful not to accidentally stitch around the eye posts, tangle your thread, or sew through the back fabric. I like to check after every stitch.



STEP 37

Stuff the body.

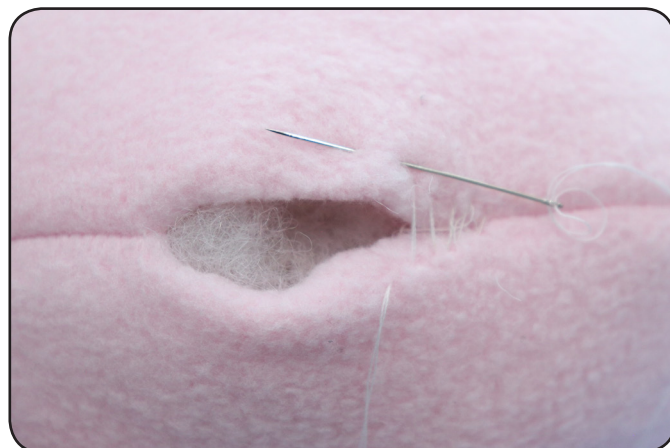
Be sure to fluff your polyfil first. (Break it into very small pieces.) This will help prevent clumps.



STEP 38

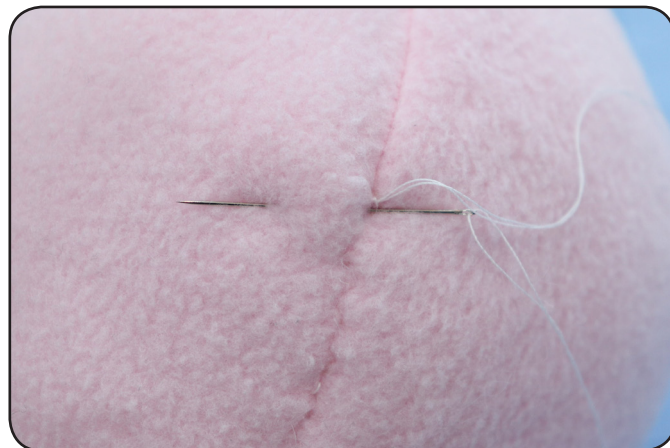
Use a slip stitch (ladder stitch) to close the opening in the back of the body. Remember to start sewing from the inside so the knot is hidden.

(See the next step for tips on how to hide your end knot.)



STEP 39

To hide your end knot tie your knot as usual. Then, with your needle still attached slide the needle back through the fabric right next to your knot (this is usually at the seam). Slide it through so that the point of the needle is poking out of the fabric about an inch or so away from the knot (where you inserted your needle). Pull the needle through, give it a tiny gentle tug, squeeze your plush a bit, and then cut your thread. Your knot should now be inside the plush (or close to it). You should not see thread tails.



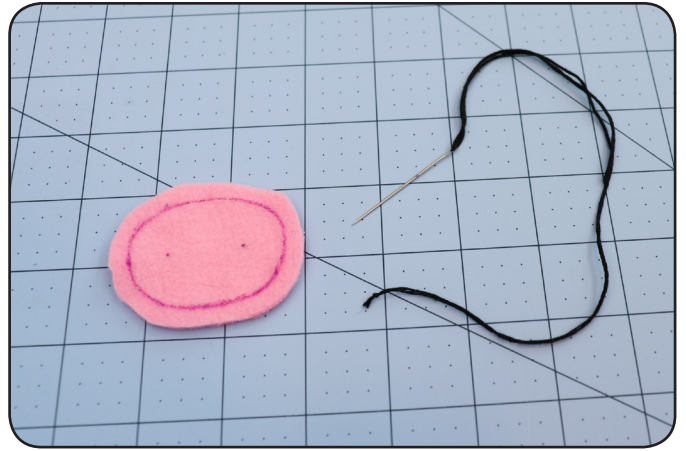
STEP 40

After the body is sewn closed it may not look perfectly shaped. Since fleece stretches this is common. Take the time to shape the body. I do this by squishing the ball and gently rearranging the shape with my hands until I am happy with how it looks. Sewing carefully on the drawn lines also helps the plush have the right shape.



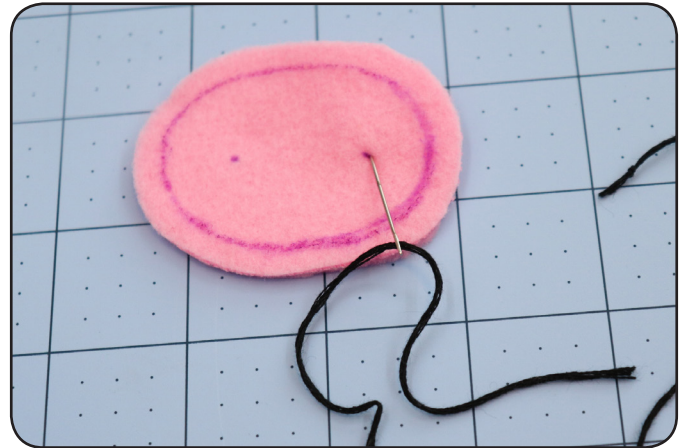
STEP 41

Up next, we will add the nostrils to the nose by tying two french knots.
If you already know how to make a french knot skip to step 49.



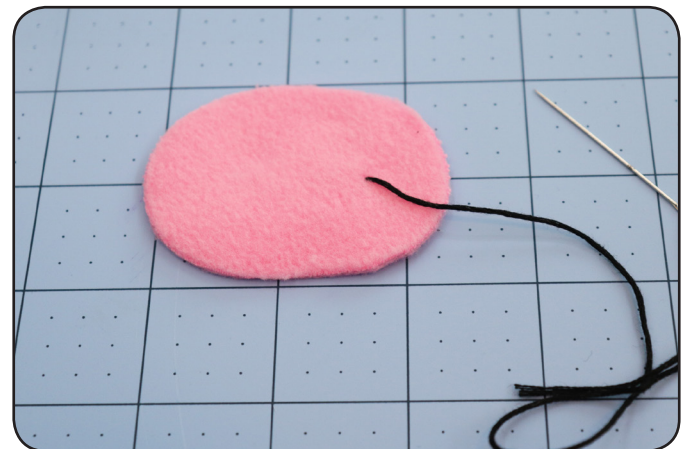
STEP 42

Stick the needle through one of your nostril markings on the wrong side of your nose piece.



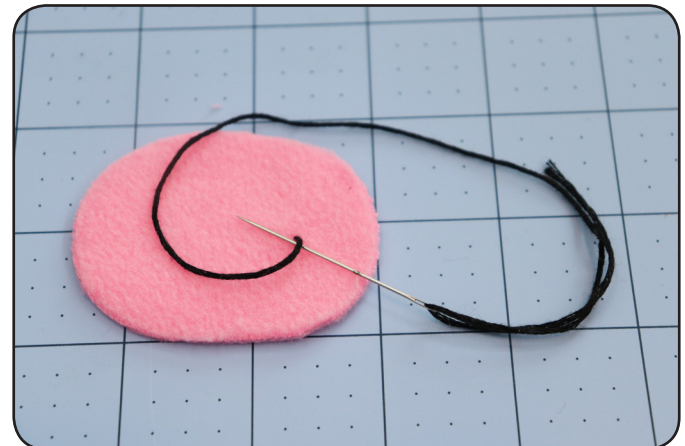
STEP 43

Pull the thread through to the right side of the fabric.



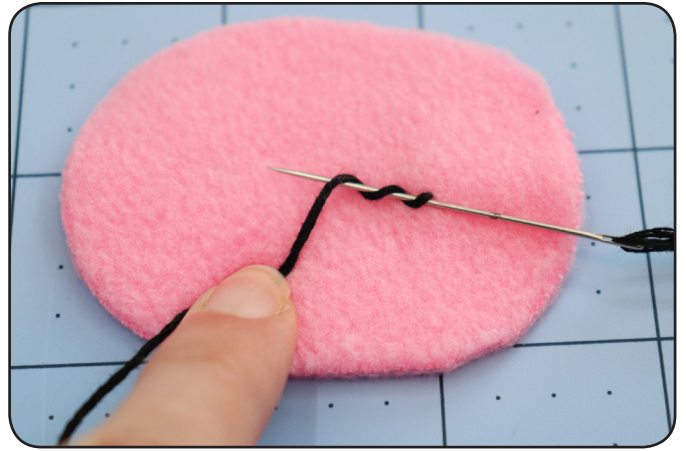
STEP 44

Make a loop with your thread.



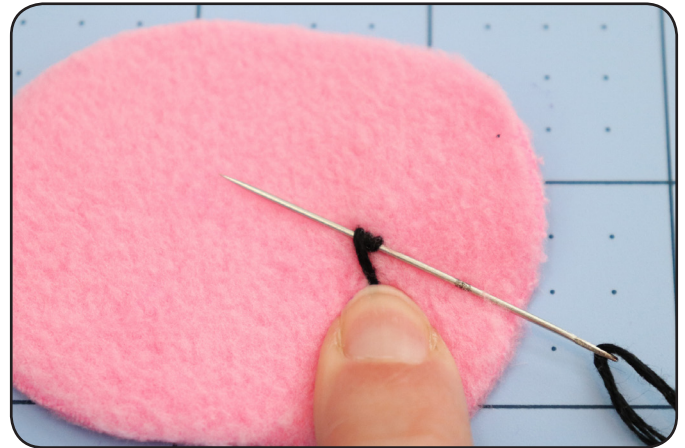
STEP 45

Wrap the thread around the needle two to three times.



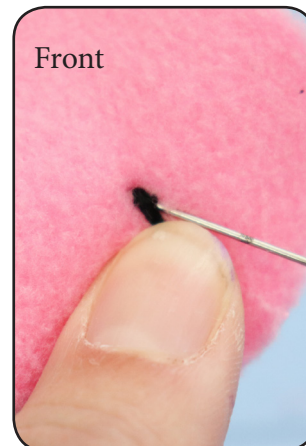
STEP 46

Slide the thread toward the base of the needle. Keep the thread tight and pull it down on the needle until it touches the fabric.



STEP 47

Slide your needle back out a bit. Carefully! You don't want to pull it out all of the way. Keep the loops in place. I usually hold the thread snug and slide the needle until the tip is touching the fabric just a bit away from the original starting point. (You don't want the exit point to be the same as the starting point, but they should be really close.) Push the needle through to the back of the fabric. Continue to keep the loops in place and pull your needle through to the back slowly so the thread doesn't tangle.



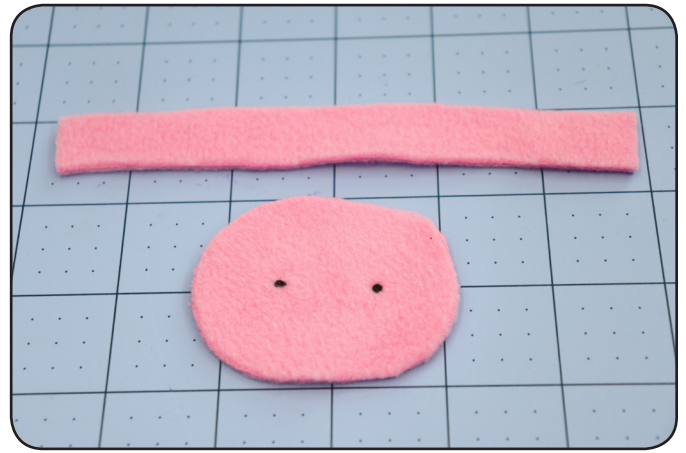
STEP 48

Tie a normal knot on the back of the fabric. And cut your thread. Your french knot is complete!



STEP 49

Once the nostrils are complete it's time to add the side band to the nose.



STEP 50

Draw two lines on the wrong side of the nose side piece. Each line should be about $\frac{3}{16}$ or $\frac{1}{4}$ inch away from the edges.



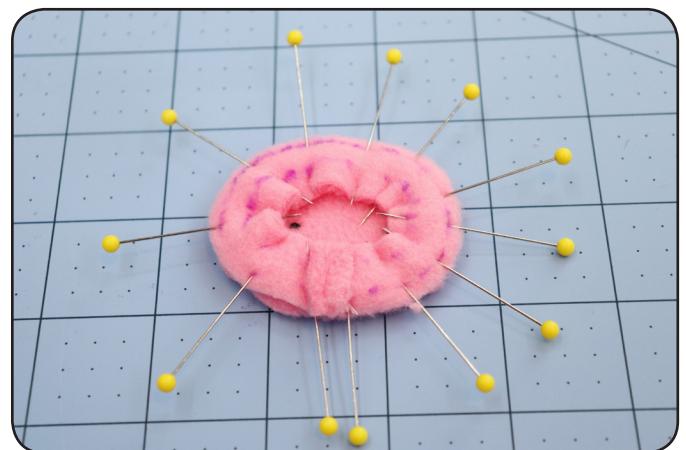
STEP 51

Fold the strip in half and sew the two short ends together with a $\frac{1}{4}$ inch seam allowance. I usually do this by hand with a backstitch. Mark the halfway point (fold) with a pin or fabric marker.



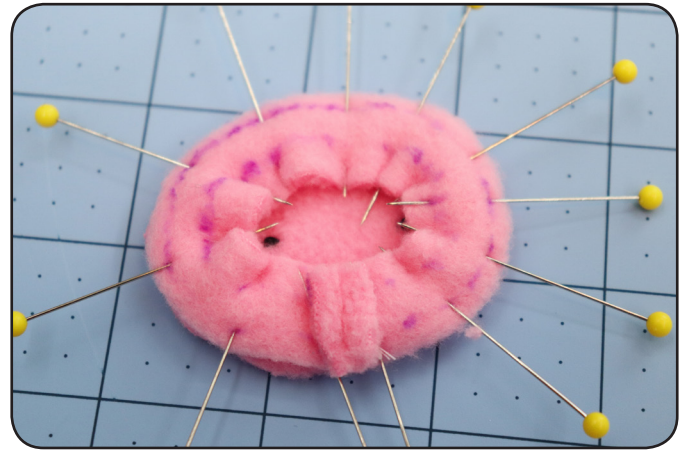
STEP 52

With right sides together pin the nose side loop to the right side of the front of the nose. First, I like to align the bottom center of the nose front piece with the seam on the side piece, and then the top center with the halfway point. I will then stretch the rest to fit and pin. Sew on the line closest to the outer edge. I usually sew by hand with a backstitch (see step 53) but you could sew on the machine. Just stitch slowly and carefully.



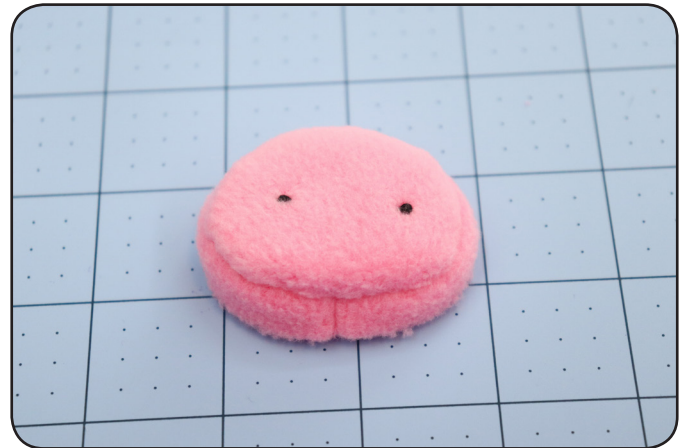
STEP 53

When sewing the nose side piece to the front of the nose be careful to stitch through the drawn lines. I like to check both the front and the back of the fabric as I sew to make sure that my stitches are going through the line on the side piece as well as the line on the front piece. This will help ensure that your nose has the correct shape when you are finished.



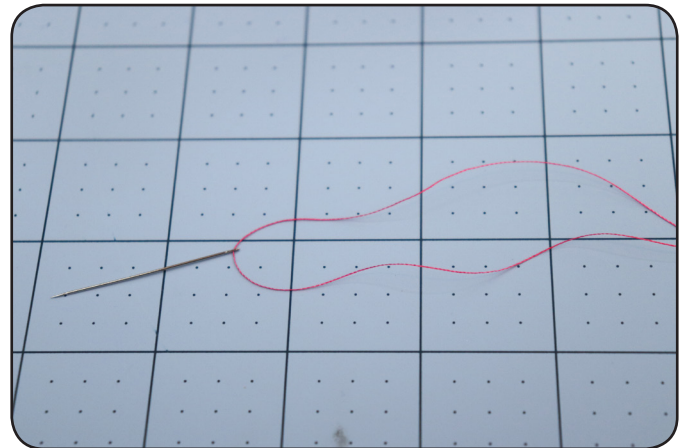
STEP 54

Your nose front and side pieces should now be attached. Turn right side out.



STEP 55

Double thread a needle.



STEP 56

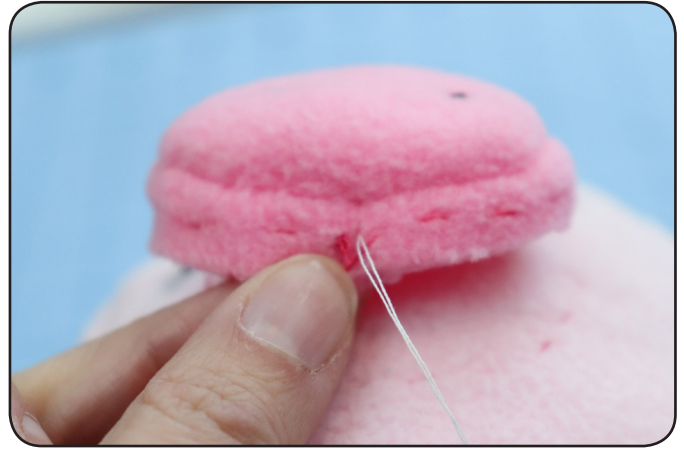
Basting stitch by hand along the second line you drew on your nose side pieces (this is the line that you did not sew on previously) about 1/4 inch from the edge all of the way around. Remember, a basting stitch is a long stitch length that is meant to be removed later. In this case, stitches of about half a centimeter in length work well. These stitches will act as a guideline for when you attach the nose to the body later.



STEP 57

Attach the nose to the body with a slip stitch (ladder stitch.)

Begin with your thread coming from the inside of the nose to the outside at the seam of the side piece about 1/4 inch from the bottom (along your guideline.) This is the bottom center of the nose.



STEP 58

Next take a small stitch on the body at the placement for the bottom center of the nose.



STEP 59

Directly above where the previous stitch ended, sew another stitch on the nose following your guideline.



STEP 60

Your stitches should begin to look like the rungs of a ladder.



STEP 61

Pull the thread, tucking the seam allowance inside, so the fabric of the nose touches the fabric of the body at your guidelines.



STEP 62

Continue stitching around the nose in this manner. Take a few stitches following your guidelines on the nose and body, tuck in seam allowance, pull the thread, and continue. As you go be sure to line up the center top of the nose with the center top placement for the nose on the body. Stop about one inch before finishing.



STEP 63

Fill the nose with polyfill.



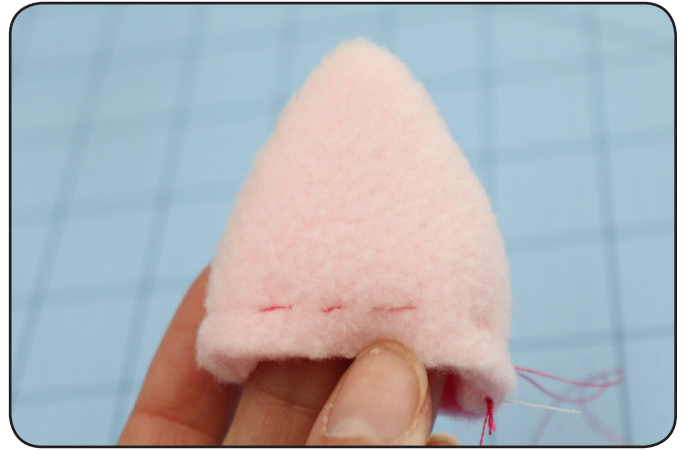
STEP 64

Finish your slip stitching and hide your knot. The nose should now be attached.



STEP 65

Basting stitch by hand about 1/4 inch away from the open edge of the ear, all of the way around. This will act as a guideline for attaching the ear to the body. I usually do this from the wrong side so I can see my original lines. You could also mark the right side with a marking tool. I find basting with thread works well for me.



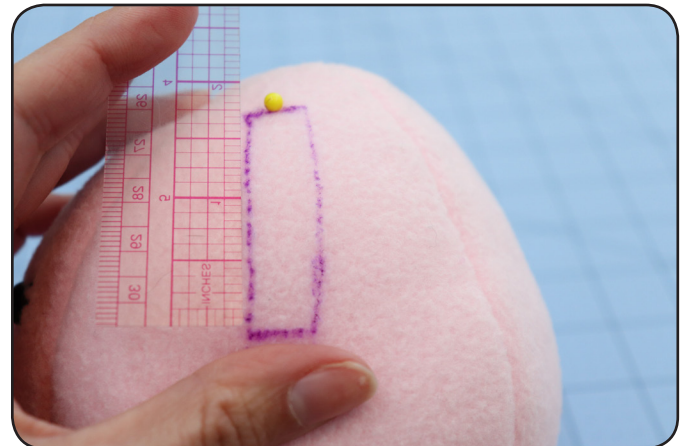
STEP 66

It's time to add the ears to the body! To do so you first need to find the correct placement. Start by looking at the center top of the body. Find the face. You will be marking on the two panels next to the face (the sides). Depending on the size of the plush this placement may change. On the small pig, I marked 1 1/4 inches down from the center top of the head, while on the larger pig I marked down 1 1/2 inches. This will be the highest point of the ear. You may want to hold your ear pieces up to the body and decide where you like them positioned.



STEP 67

Draw a box for the ear placement. The center top of the box will be at your mark from Step 66. The box should be about 3/8 inch to 1/2 inch wide and from 1 3/4 to 2 1/4 inches long. On the small plush my box was 1/2 inch wide and 1 3/4 inches long. Take the time to make sure your box is centered and straight. This will be your guideline for sewing. (If you don't want to do this with a marking tool you can use pins or basting stitches.)



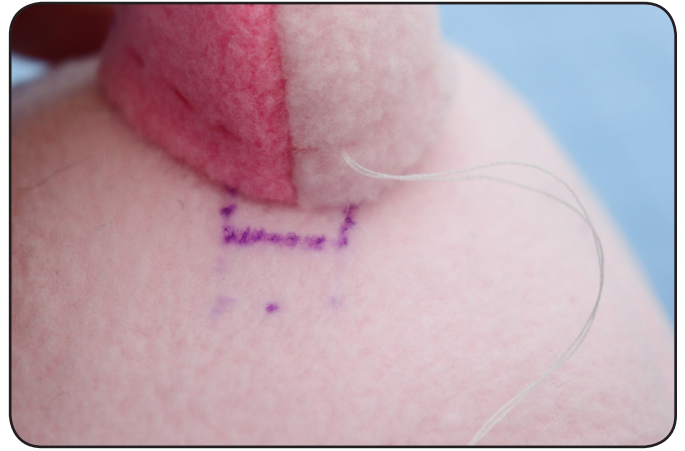
STEP 68

Turn your ear right side out and fill with just a little bit of polyfil. You don't want it to be bulging or round. You just want to give it a little filling so it doesn't look or feel empty.



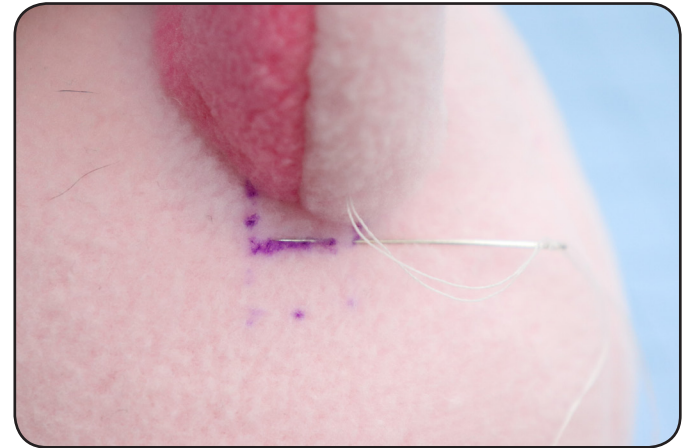
STEP 69

It's time to attach the ear to the body. The method is similar to that of attaching the nose, so if you feel confident you understand the process you can skip to Step 72. Double thread your needle. Starting from the inside of the ear, about 1/4 inch or 3/16 inch from the side seam, and on your basting stitch line (1/4 inch from the bottom) pull your thread from inside to outside. This will align with one of the corners of your drawn box.



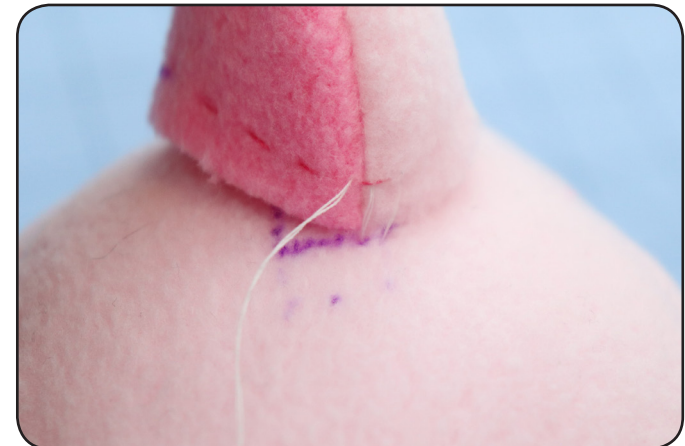
STEP 70

Find the corner of the box that aligns with where your ear should be placed. Do a small stitch through the body at that corner.



STEP 71

Next do a stitch on the ear starting right above where your other stitch ended. The stitch should be at about the same height on the ear as your previous stitch, following the basting stitch guidelines. Your stitches will begin to look like the rungs of a ladder. Pull your thread and tuck the seam allowance inside and continue stitching around the ear in a similar manner. Tie and hide your knot when finished.



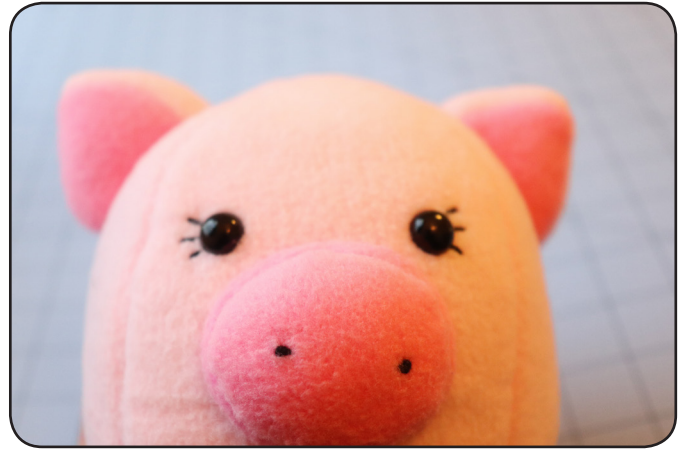
STEP 72

Your ear should be attached!



STEP 73

Repeat this process for the other ear.



STEP 74

It's time to attach the tail!

Trace the tail pattern piece onto the body where you want the tail to be placed. I placed the tail 1¼ inches from the center bottom on the small plush and 1½ from the center bottom on the large plush.

Make sure the tail is going the direction you want it placed, and in the same direction as the right side of your tail fabric.



STEP 75

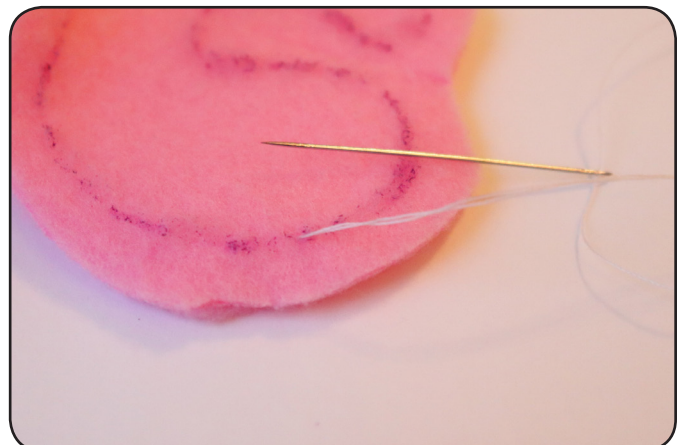
Trace the pattern piece onto the right side of the tail fabric as well.

While I did not do so on mine, it may be a good idea to mark the bottom center of the tail on both the body and the tail piece.



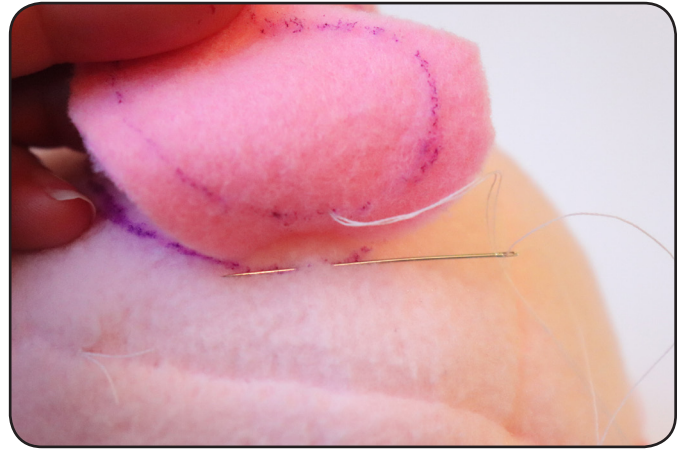
STEP 76

Double thread your needle. Pull your thread from wrong side to right side at the bottom center of the tail.



STEP 77

Take a stitch at the bottom center of the tail placement line on the body.



STEP 78

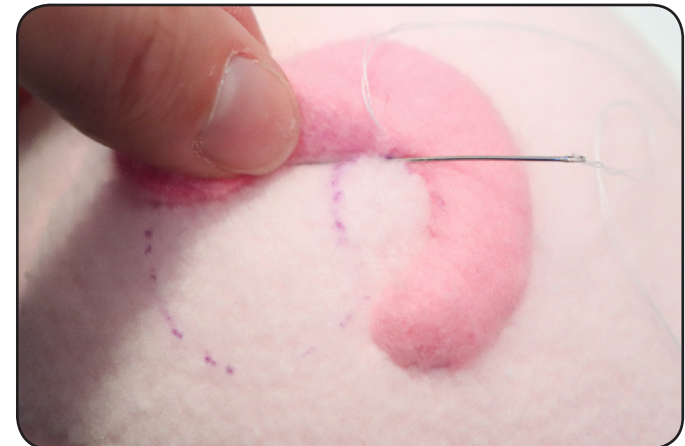
Continue to stitch around using a slip stitch (ladder stitch) as you did when attaching the ears and nose.

See steps 79 - 80 before continuing.



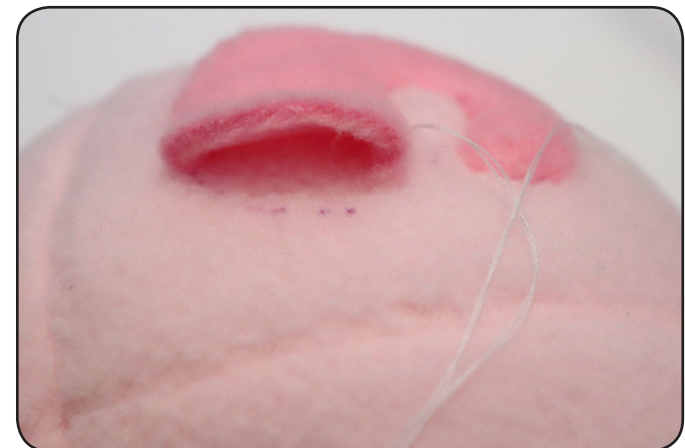
STEP 79

Take your time and go slowly, especially around the curves. At the really tight curves you may need to trim or clip your seam allowances just slightly (try not to cut closer than 1/8 inch to your sew line). You will also need to push and pull the excess fabric out of your way to stitch. Keeping your stitches small and carefully tucking in your seam allowances as you go helps you create a nice shape.



STEP 80

Stop stitching about 1 inch from the end.



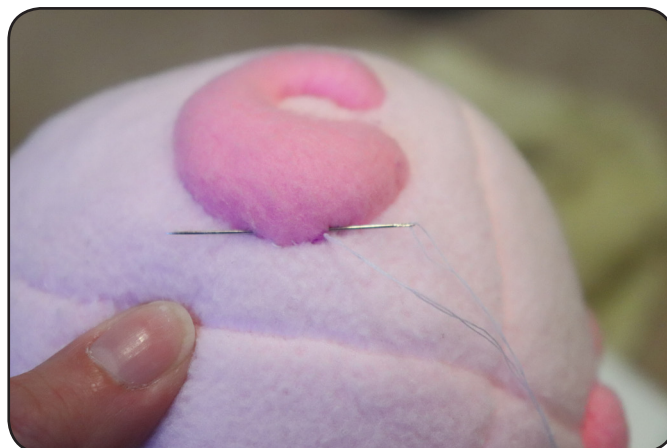
STEP 81

Fill the tail with just a little bit of polyfil.



STEP 82

Finish slip stitching the tail closed.
Tie and hide the knot as usual.



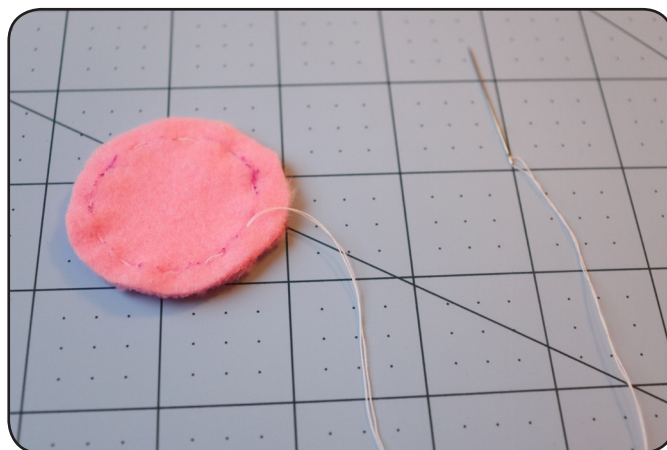
STEP 83

The tail should now be attached!



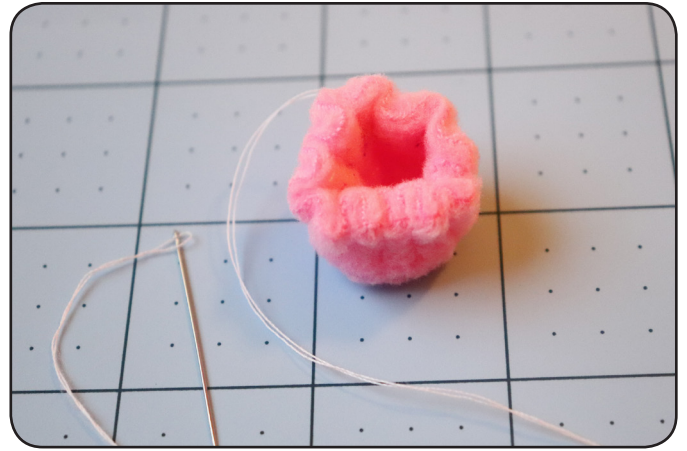
STEP 84

Time to work on the feet!
Double thread a needle and tie a knot at the end.
Basting stitch by hand around each circle on the
drawn line. Keep the thread and needle attached.
(Do not tie a knot when you finish.)



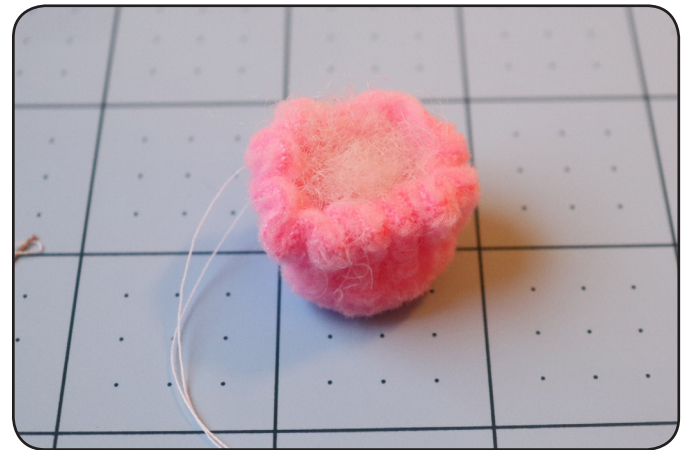
STEP 85

Pull the thread from the basting stitches so that the fabric curls up and it looks like a little draw-string bag.



STEP 86

Place a tiny bit of polyfill inside.



STEP 87

Pull the threads tight, tucking the seam allowance inside, and closing the opening.

It should look like a little button or the top of a mushroom.

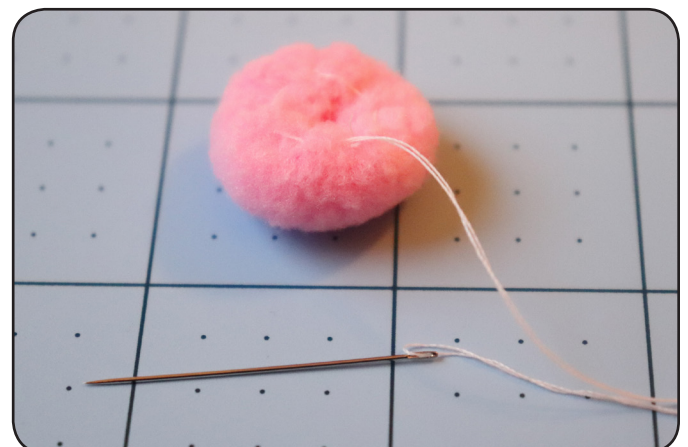
If you are having a hard time getting the seam allowance to tuck inside, you may have too much polyfil inside.



STEP 88

Sometimes if my fabric is having a hard time staying in place I will basting stitch around the back of the circle a bit more, and pull the threads again.

Once the back is all enclosed with seam allowances tucked inside, tie your knot.



STEP 89

Repeat for the other circles.

Try to keep the circles about the same size.

You should have four circle pieces total for the feet when finished.



STEP 90

Determine where you want to place the feet.

Trim the pattern piece for the feet to the dotted line for your stitch guide. Trace the stitch guide on the body where you want the feet to be placed. You can mark the placement with pins or thread if you don't want to use marker.

(See step 28 for a reminder of what it looks like to mark placement with pins, and step 16 for thread.)



STEP 91

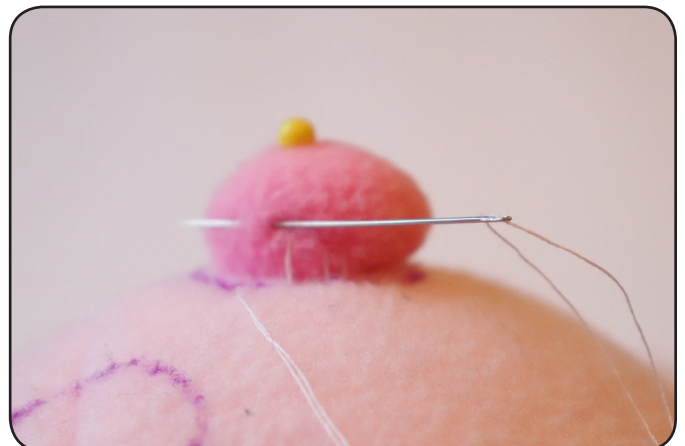
After I mark the placement I like to use a single pin to hold the circular pieces in place.



STEP 92

Stitch in place with a slip stitch (ladder stitch). I like to extend the stitches to about halfway up the side of the circular foot.

Go slow and keep your stitches small if possible. Be sure to hide your knot when you are done.



STEP 93

Repeat until the feet are all in place.



STEP 94

Optional:

Add a flower to the top of the plush.

Cut out the flower pattern piece using paper scissors.

Trace the pattern piece onto a piece of scrap felt and cut it out.



STEP 95

By hand, basting stitch along the straight bottom edge. Do not tie a knot when finished, keep the thread and needle attached.



STEP 96

Pull the thread so the basting stitches are pulled tight.

Tie a knot.



STEP 97

If desired, stitch a button to the center of the flower.



STEP 98

Slip stitch the flower in place near the ear.



Congratulations!
You have finished your pig plush!

Patterns and instructions are copyrighted and are for personal use only.
You are welcome to use these instructions and the pattern as needed in the classroom or for instructional purposes.
Please do not post a copy of this tutorial online.
If you enjoyed this tutorial please refer others to learncreatesew.com. Happy Sewing! Thank you!