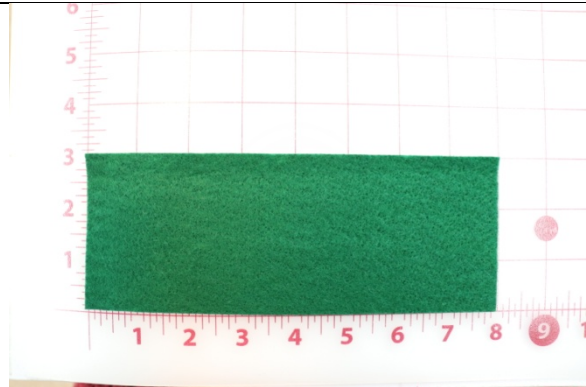


Gnome Christmas Ornament - Adding Arms & Feet

Constructing the Arms and Feet:

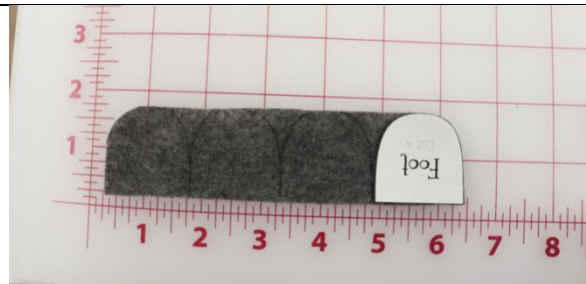
STEP 1

Cut out a 3 x 8 inch piece of felt for the arms, and a 2 x 8 inch piece of felt for the feet.



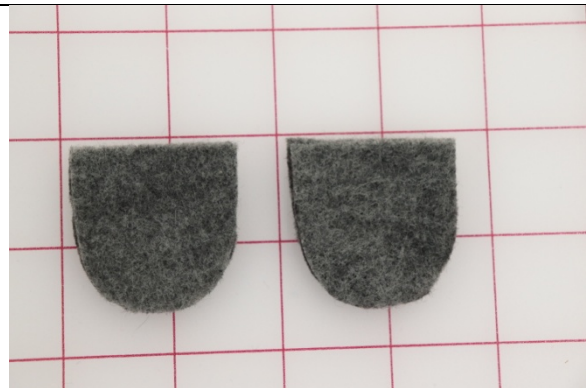
STEP 2

Trace and cut out the foot pattern 4 times.



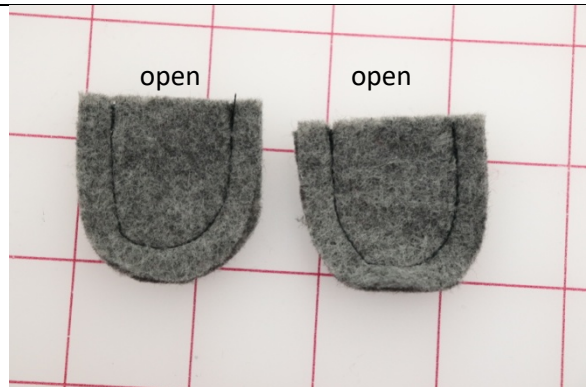
STEP 3

With right sides together place two feet pieces together. Create two stacks, one for each foot.



STEP 4

Stitch together with a ¼ inch seam allowance along the curved edge. Leave the top open.



STEP 5

Trim the seam allowance to 1/8 inch.



STEP 6

Turn the feet right side out.

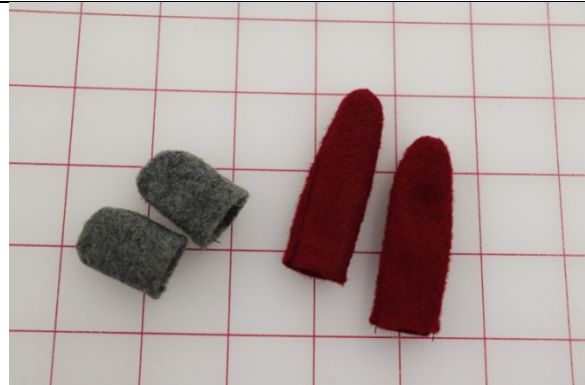
You may want to use hemostats.



STEP 7

Repeat this process for the arms.

You can keep the arms and feet floppy, as they are, or if you prefer you can put just a tiny bit of poly-fil in the arms and feet.



Adding the Arms & Feet to the Body

STEP 1

Once the beard has been attached to the body piece you are ready to add the feet and arms.



STEP 2

Place the arms on top of the beard.

The top edge of the arms will align with the top edge of the beard.

The side of the arms will rest just beyond (1/8 inch or less) the edge of the beard. (So the edges of the beard will be covered by the arms.)

Stitch the arms in place with a 1/8 inch seam allowance.



STEP 3

Move the beard and arms out of the way and place the feet on the body. The raw edges of the feet should be touching the raw edges of the body, on the bottom.

Make sure the feet are centered and placed about 1/2 inch apart.

Stitch the feet in place with a 1/8 inch seam allowance from the raw edges.



Complete the rest of the gnome as described in the video.