



Fox Plush Instructions

by LearnCreateSew.com

SUPPLIES:

6 x 48 inches Fleece for Body
6 x 8 inches of White Fleece for Belly & Tail
6 x 8 inches of Black Fleece for Feet and Ears
3 Safety Eyes: 2 for eyes (12mm for large plush and 10 mm for small plush) and 1 for nose (6mm)
Embroidery Floss & Coordinating Thread
Polyfil
Optional: Scrap Felt & Button

TOOLS:

Sewing Machine (Optional) This project could be done entirely by hand if desired.

Hand needles
Machine Needle & Size: 12 - 14 universal or ball point
Walking Foot (Optional)
Marking Tools (example/air erase markers)
Thread Wax

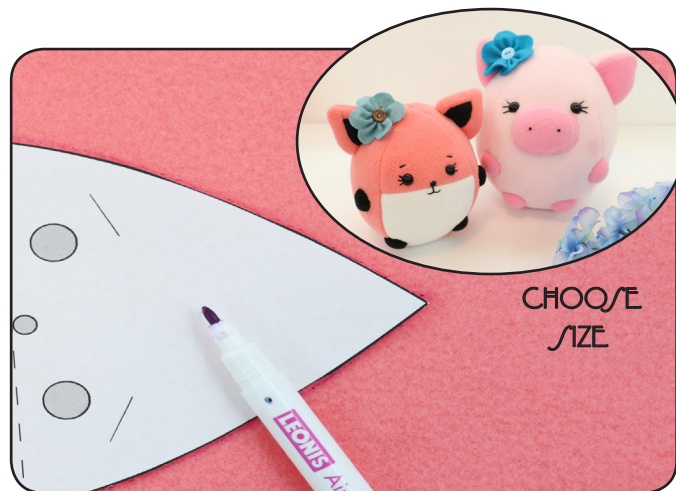
WORKING WITH FLEECE:

- Increase your stitch length to 3 - 4 depending on the bulkiness of your fabric. The thicker the fabric, the longer the stitch length.
- Don't iron. Fleece can melt under the heat. Simply finger press.
- Clips work great to hold together bulky sections.
- If you notice skipped stitches, try using a ball point needle
- A walking foot can help prevent rippling and stretching of the fabric.
- Fleece stretches. Try not to pull the fabric when sewing.
- Start stitches \approx 1/4 inch away from the fabric's edge so it isn't caught in the needle plate.

STEP 1

CHOOSE THE SIZE OF YOUR PLUSH.

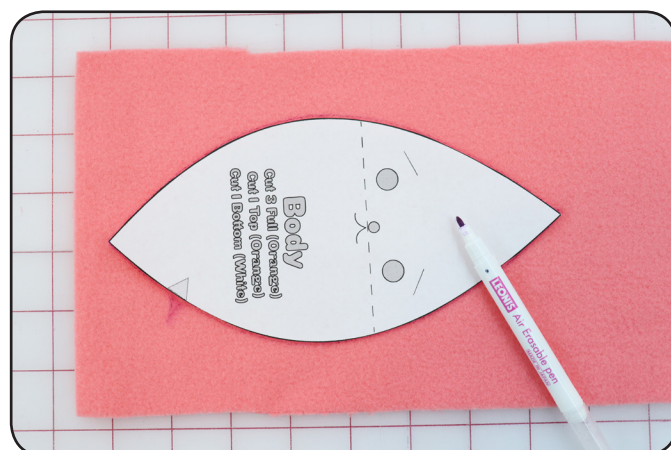
Cut out your pattern pieces on the **SOLID** lines using paper scissors. You will be tracing your pattern pieces. I used an air erase marker, but this may not work for you if you are not completing the project in one sitting. You could also use a heat erase marker or other marking tool. Always test marking pens on your fabric first. I've even used similar colored Sharpies. These work on the **WRONG** side of the fabric as long as you don't let it bleed to much. See STEP 2 before continuing.



STEP 2

Trace your body piece **ONCE** onto the **WRONG** side of the fabric. Be sure to keep the pattern piece at least 1/2 inch from the edges of the fabric.

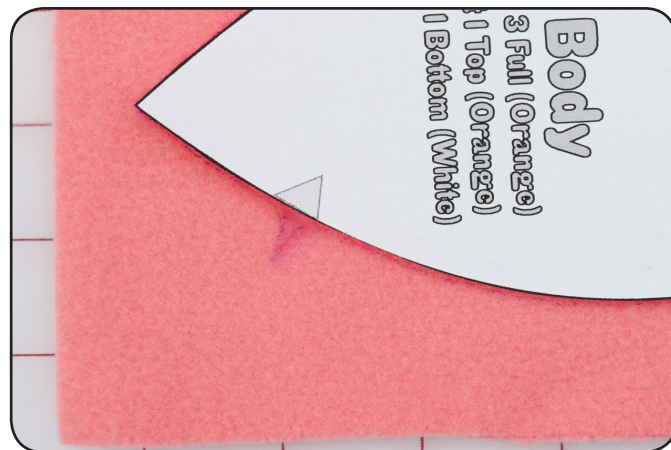
Tip: To ensure you have enough fabric you may want to layout all of your pieces following the instructions in steps 2 - 12 before tracing and cutting.



STEP 3

Mark the placement of the triangle on the fabric. You can do this by drawing a line or a reflection of the triangle pointing away from the one on the pattern piece.

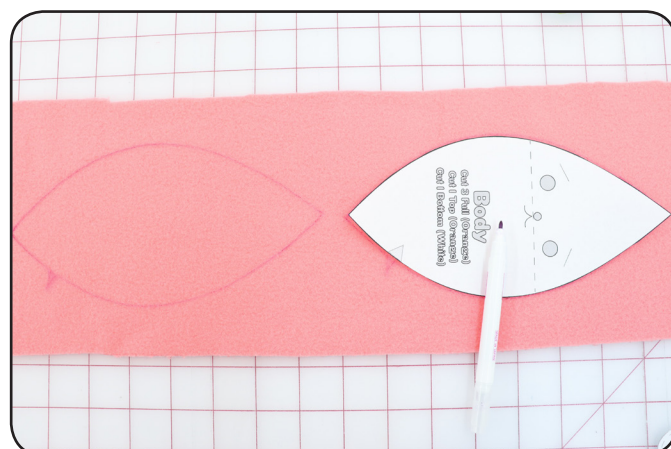
This will help keep your pieces arranged properly. The bottom of the pattern is slightly wider than the top and we don't want to accidentally place a piece upside down.



STEP 4

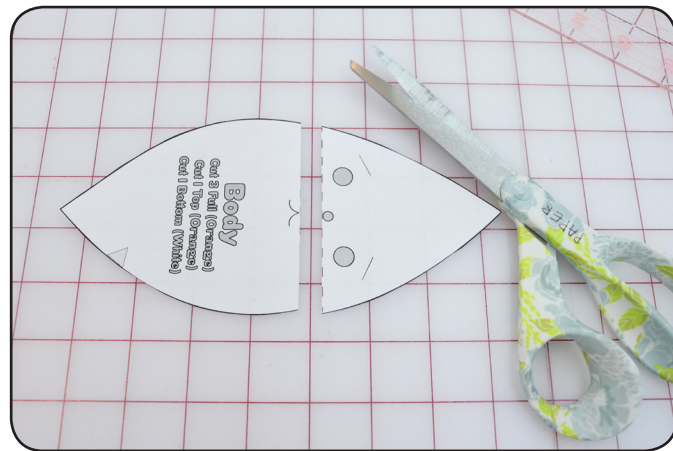
Trace the body piece twice more in the same manner. You should have a total of 3 full body pieces drawn.

Leave at least 1/2 inch between pieces and away from the edges.



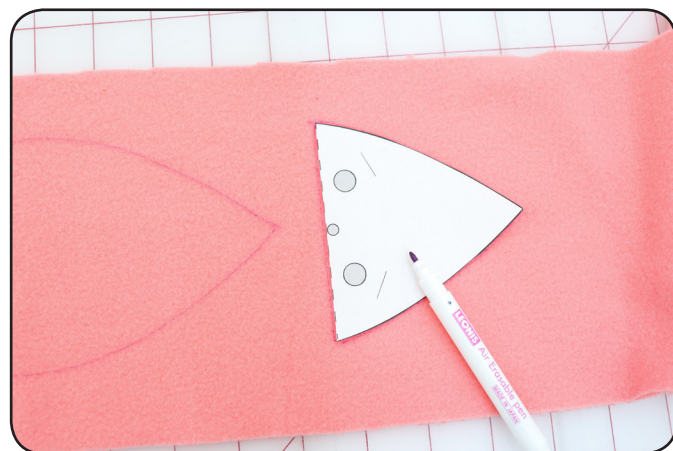
STEP 5

Using paper scissors cut the body pattern piece at the dotted line, making two pieces.



STEP 6

Trace just the top part of the body piece once. Leave at least a 1/2 inch of space between pieces.



STEP 7

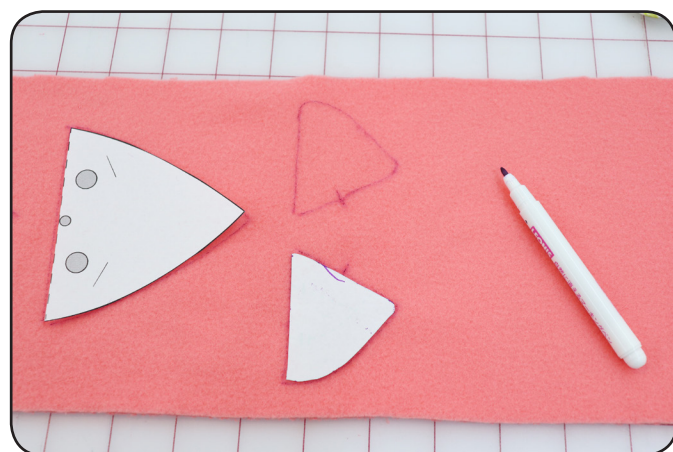
Trace the full ear piece once. Leave at least 1/2 inch between pieces.

I like to mark which side is the interior of the ear. The one with the single mark. (See Step 8 for Photo.)



STEP 8

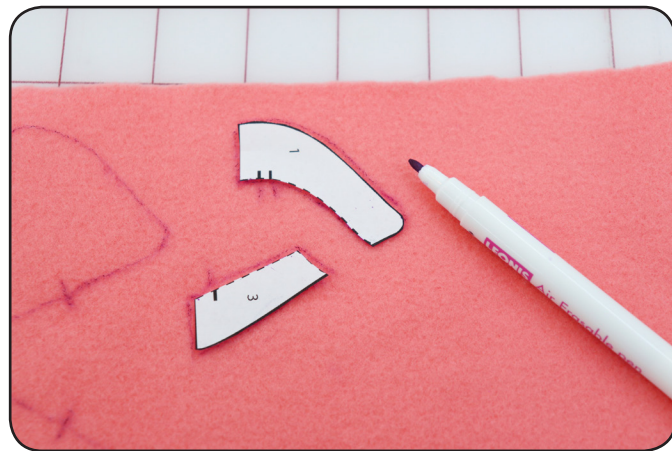
Flip the ear piece over so you are looking at the wrong side of the pattern piece. Trace again. Mark the interior of the ear as before. This will give you a left and right ear. This is called cutting one and one reversed. You will need to do this with all pieces that have a left and right side.



STEP 9

Cut your ear pattern piece on the dotted lines. Trace pieces 1 and 3 on the orange (main body color) fleece.

Leave space between the pieces, and when tracing be sure to mark the dashes shown on the pattern pieces onto your fabric. This will help you to align the ear pieces later when you sew.



STEP 10

Flip the pattern pieces over so that you are looking at the wrong side of the pattern pieces. Trace ear pieces 1 and 3 again.

This will give you a left and right ear.

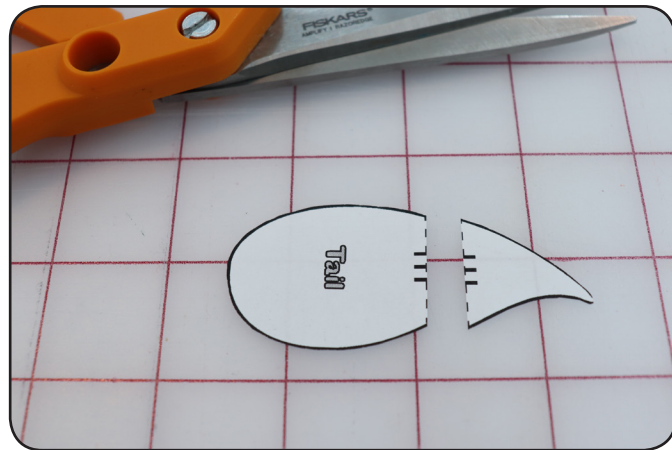
Again, this is called cutting one and one reversed.

Again, this is called cutting one and one reversed.



STEP 11

Cut the tail pattern piece on the dotted line.



STEP 12

Trace the bottom of the tail piece only onto your main fabric.



STEP 13

The lines that you have traced are the **SEW** lines. That means that is where you will **SEW**. Because of this, you do **NOT** cut on these lines. You will cut out your pieces 1/4 inch away from your drawn lines.

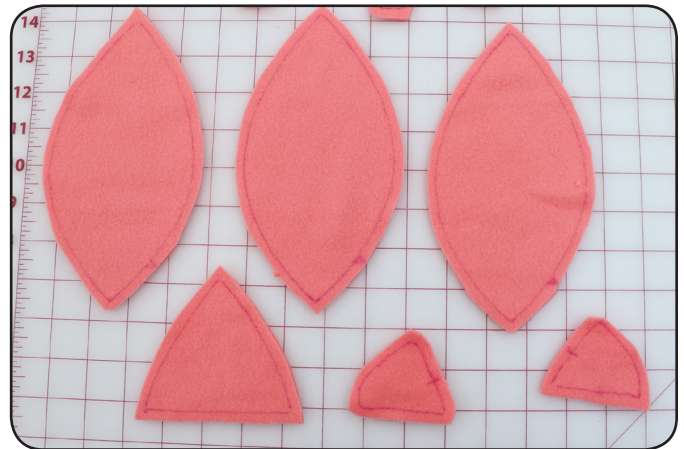
This is why you have to leave space between your pieces.

Cut out all of the pieces you traced on your main fabric. Leave a 1/4 inch seam allowance.



STEP 14

You should have your pieces cut out. (Not all pieces shown.)



STEP 15

In a similar manner trace the top of the tail, and bottom of the main body piece onto white fleece.

Remember to leave space between them.

Cut out each piece 1/4 inch away from the line to leave a seam allowance. Remember the line you have drawn is the sew line.

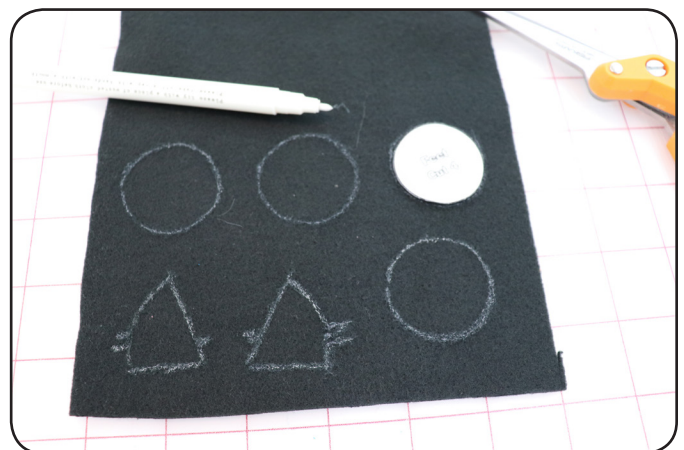


STEP 16

Trace the two arms, two feet, and two #2 ear pieces onto the black fleece as before.

I chose to use the circle pattern piece for the arms, but you could also use the long arm piece.

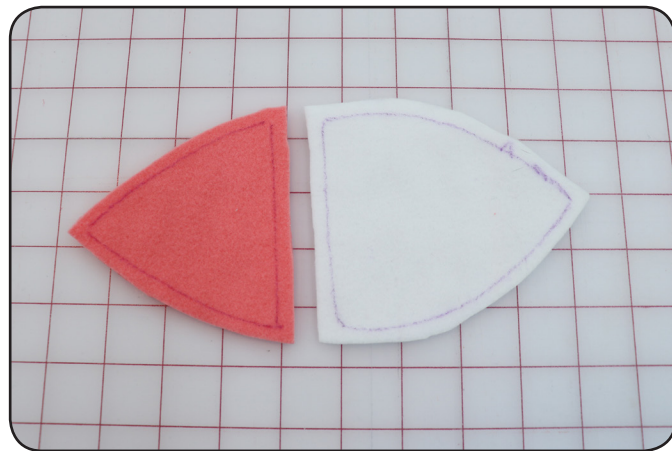
Cut them out leaving a 1/4 inch seam allowance. If you don't have a white tracing tool, a black sharpie also works, just be careful not to let it show on the right side of the fabric.



STEP 17

All of your pieces have now been cut out and you are ready to sew. Use coordinating thread, and stitch length 3.5. If you get skipped stitches try using a ball point needle. You can also use a walking foot if you would like to.

Lay out your two front body pieces, the orange and the white.



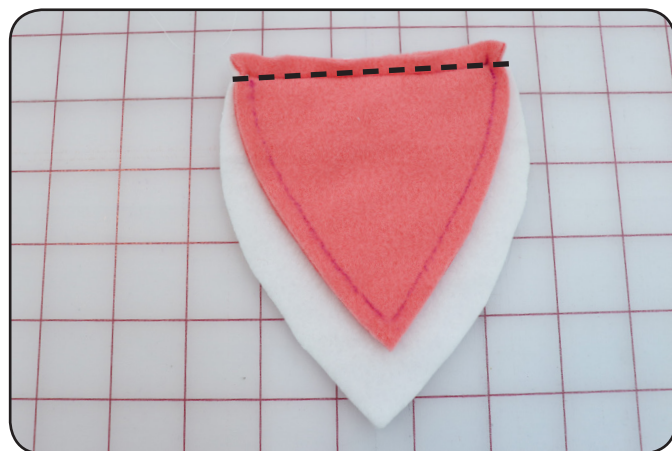
STEP 18

Place the two pieces **RIGHT** sides together lining up the straight edge.

This means you should be able to see your markings.

Stitch along the straight edge. Follow your line.

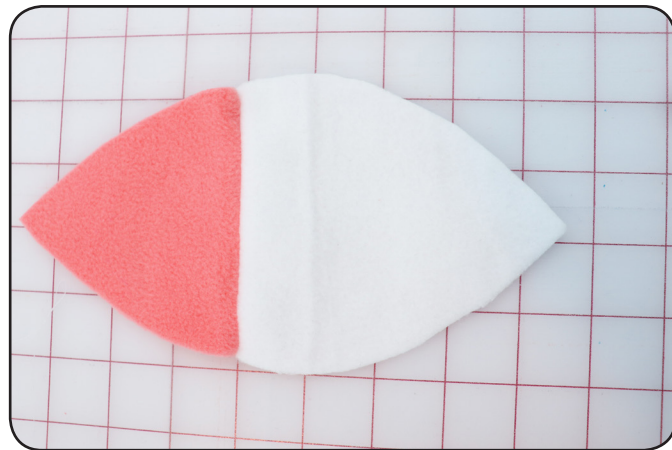
Tip: Sometimes backstitching can make the fabric pull funny at the ends. You can always leave your thread tails long and tie them together by hand, instead of backstitching, if you prefer.



STEP 19

The front body piece should now be connected.

Note: While I didn't do this when constructing the fox, now may be a good time to use your pattern piece to mark the placement of your eyes, nose, etc. on the face. If you use a marking tool make sure to test it on your fabric first, and be sure that the markings won't be visible when you are finished with your project.



STEP 20

Lay one of the other body pieces on top of the front piece with right sides touching. Make sure to take note of your mark that indicates the bottom of the pattern. This should align with the white portion of the front piece.

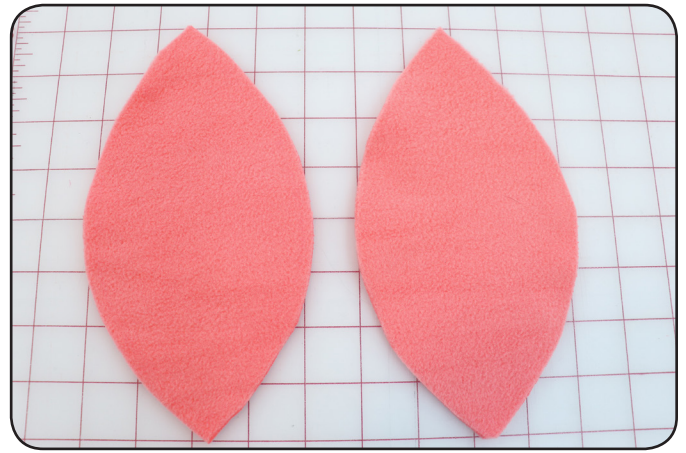
Stitch the two pieces together along one of the sides. This means from point to point (along one curved edge of the football shape).

Follow your drawn line as a guide.



STEP 21

Take your other two body pieces. Take note of the markings that indicate the bottom of the pieces.



STEP 22

Place the pieces right sides together. Sew along one edge as in step 20.



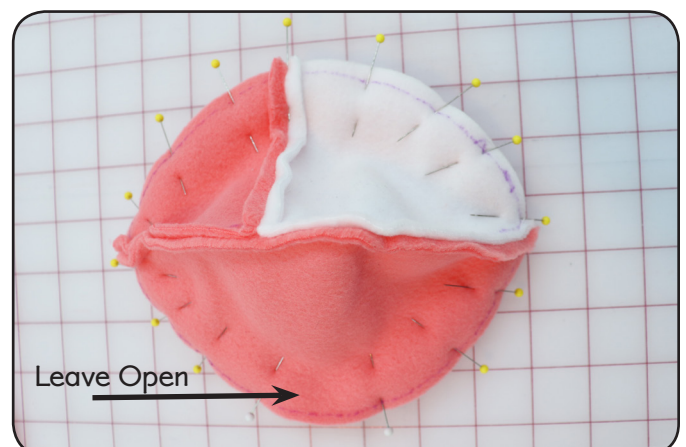
STEP 23

When you open up these pieces they should look bowl like. You should have two pieces that look similar to this.



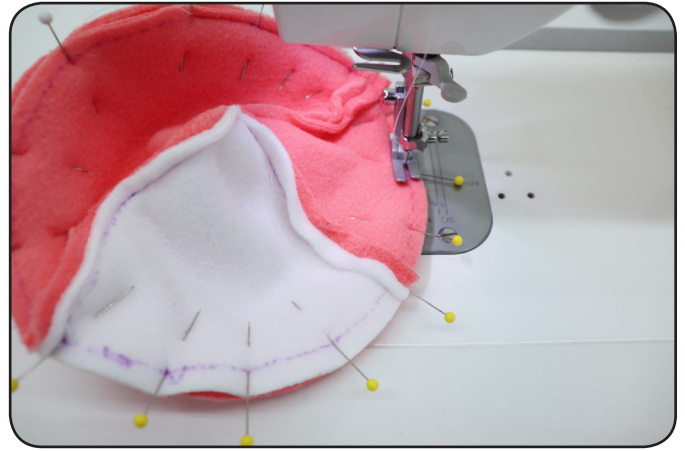
STEP 24

Open up the two bowl like pieces. Place them right sides together. Pin around the edges. Take note of the markings that indicate the bottom of the pieces and make sure they are placed correctly. The edges should begin to look like a circle. You are going to sew around the circle, sewing the two bowl pieces together, following your guideline. Leave an opening about 3 inches long on the center back.



STEP 25

Carefully stitch around the circle following your drawn line..



STEP 26

Turn the body of your fox right side out.



STEP 27

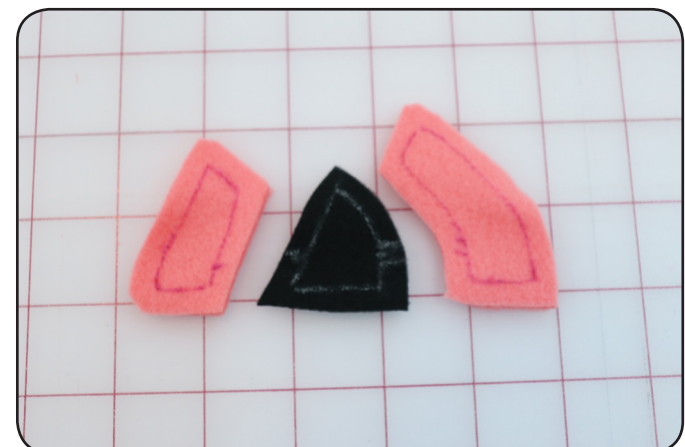
If you have not already done so, mark where you would like to place the eyes and mouth. Make sure to use a marker that vanishes, or be sure all markings will be hidden. Always test your fabric first.

You can always mark the placement with pins or thread if you prefer.



STEP 28

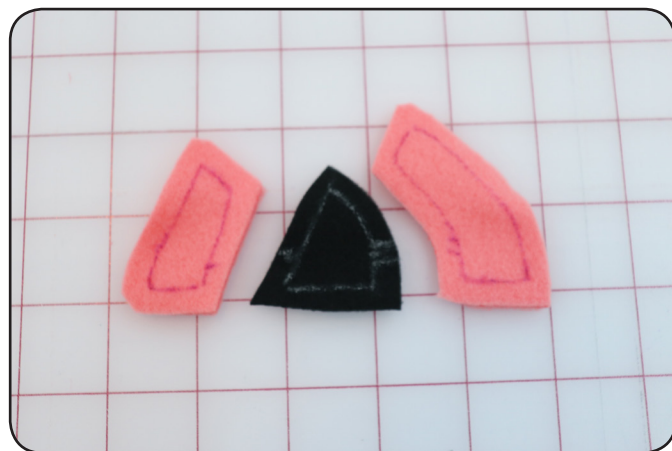
Find three of your ear pieces that go together. (One each of pieces 1, 2 and 3). Check your markings. The sides with the single dash should match, and the sides with the double lines should match.



STEP 29

You will begin by sewing pieces 2 and 3 together. These are the smaller pieces. You will be sewing along the side with one dash.

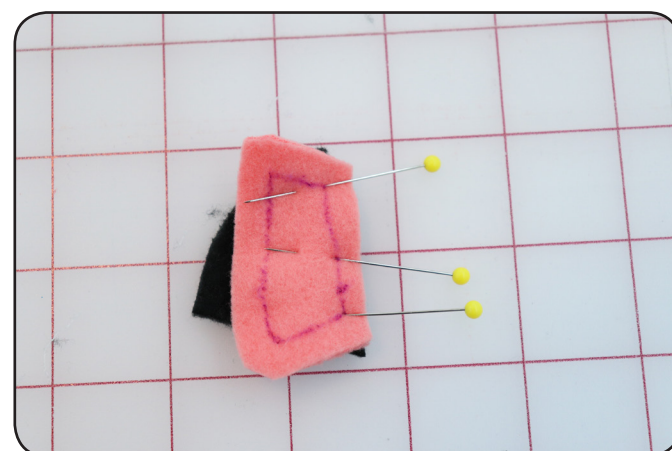
See steps 30 - 31 for more specific information on how to sew them.



STEP 30

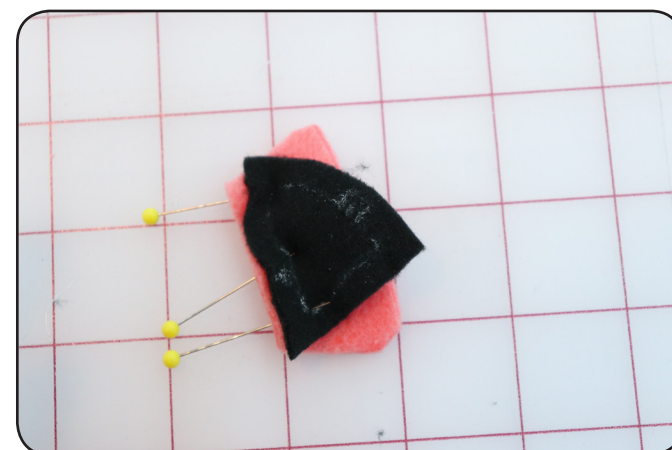
Place pieces 2 and 3 of the ear right sides together aligning the side with one dash. Stitch along that edge along the line.

TIP: I like to pin the two pieces together by first lining up the corners. I stick a pin through the corner of one piece so it comes through exactly at the corner of the other piece and pin. I repeat with the other corner. and then pin in the middle.



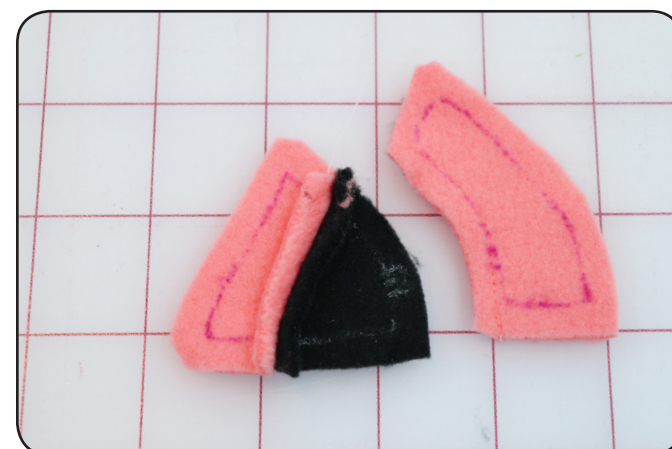
STEP 31

This is what it looks like from the other side.



STEP 32

Once the two pieces are joined they should look like this.

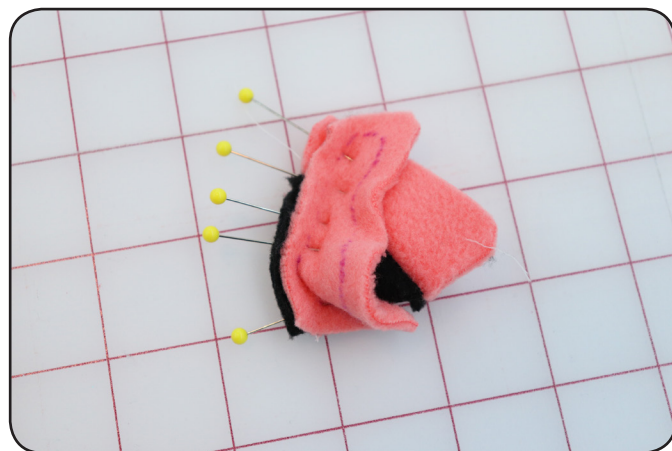


STEP 33

Place piece 1 right sides together to the combined piece 2 and 3 so that the edge with the two dash marks line up.

Again, I find it helpful to pin the corners of the pieces at the drawn lines first, making sure they line up, and then pinning in the middle.

Stitch along the line with the two dashes.



STEP 34

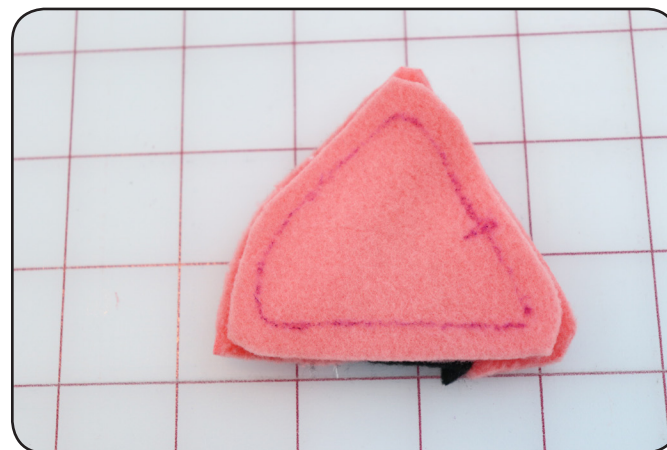
The front of the ear should now be constructed!



STEP 35

Place a full ear piece, the back of the ear, right side down on top of your assembled pieces 1-3. Right sides should be touching. Sew the two together around the sides.

Leave the bottom open.



STEP 36

This is what it should look like when sewn.



STEP 37

Turn the ear right side out.

It may be necessary to trim the seam allowance at the tip of the ear just a bit to help it lay better. Be careful not to cut your stitches. I would not trim any shorter than 1/8 inch.

Repeat this entire process for the other ear.

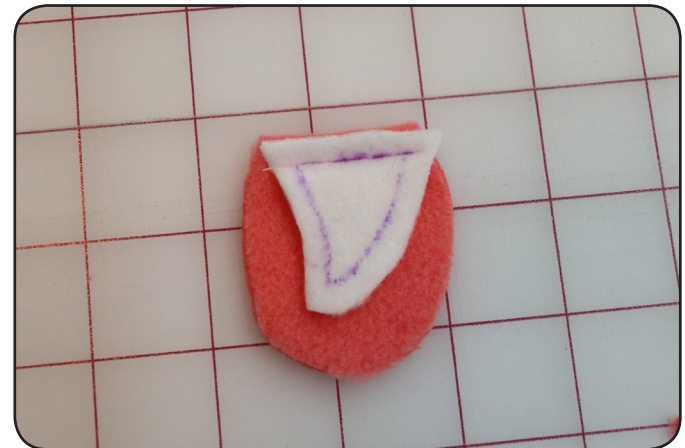


STEP 38

Let's sew the tail.

Place the top of the tail and bottom of the tail right sides together aligning the straight edge.

Stitch along the straight top edge.



STEP 39

The tail should now be one piece. If seam allowance points stick out beyond the edge of the tail go ahead and trim them off so that the piece has a nice smooth shape.



STEP 40

Put your safety eyes (and nose) on the face.

Make VERY VERY small holes for the eye posts to slide through. If the hole is too big the eyes may fall out, so make the smallest hole possible.

Be sure you have the correct position before making the holes. I like to mark it with an air erase pen. (Always test on your fabric first.)



STEP 41

Use embroidery floss to add decoration to the face if desired. I added a mouth, eyelashes, and eye-brows. You can decorate your fox however you like! You will be stitching through a single layer. You will have to reach through the opening in the back of the body to do this. Be careful to make sure your thread doesn't get tangled, wrapped around the eye posts, or accidentally go through the back fabric. I recommend checking after every stitch.



STEP 42

Fluff the body of your fox.

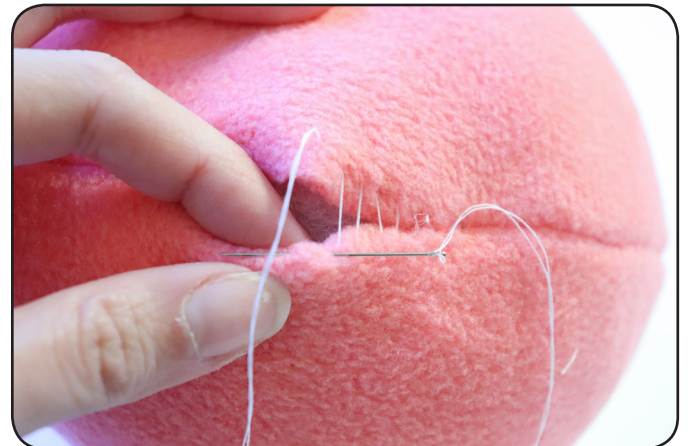
Be sure to fluff your polyfil first. (Break it into small pieces.) This will help prevent clumps.

Tip: After the body is sewn closed (Steps 43-44) it may not look perfectly shaped. Since fleece stretches this is common. Take the time to shape the body. I do this by squishing the ball and gently rearranging the shape with my hands until I am happy with how it looks. Sewing carefully on the drawn lines also helps the plush have the right shape.



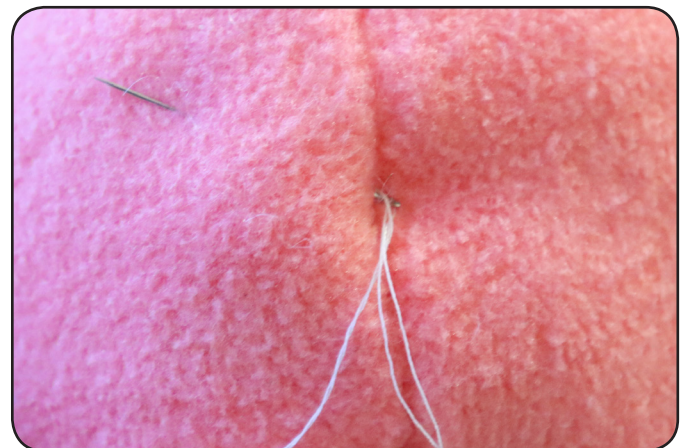
STEP 43

Use a slip stitch (ladder stitch) to close the opening in the back of the body. Remember to start sewing from the inside so the knot is hidden. (See the next step for tips on how to hide your end knot.)



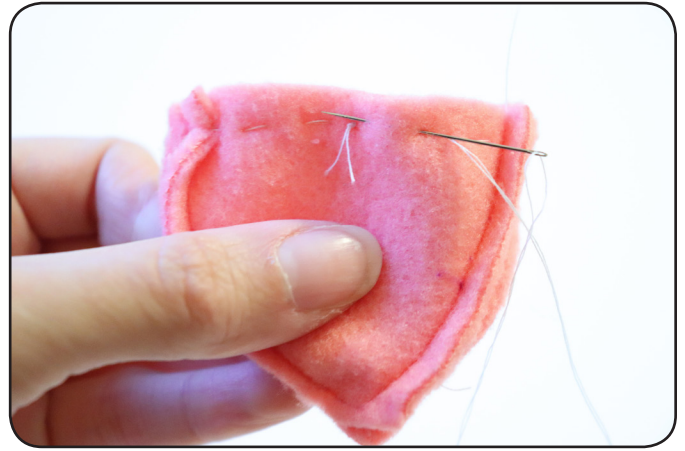
STEP 44

To hide your end knot tie your knot as usual. Then, with your needle still attached slide the needle back through the fabric right next to your knot (this is usually at the seam) so that the needle is poking out of the fabric about an inch or so away from the knot (where you inserted your needle). Pull the needle through, give it a tiny tug, and then cut your thread. Your knot should now be inside the plush (or close to it). You should not see thread tails.



STEP 45

Basting stitch by hand about 1/4 inch away from the open edge of the ear, all of the way around. Just use large stitches, about 1/2 a centimeter. This will act as a guideline for attaching the ear to the body. I usually do this from the wrong side so I can see my original lines. You could also mark the right side with a marking tool. I find basting with thread works well for me.



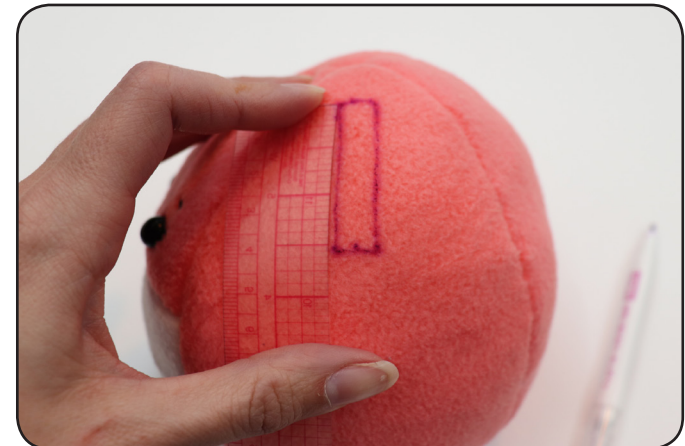
STEP 46

It's time to add the ears to the body! To do so you first need to find the correct placement. Start by looking at the center top of the body. Find the face. You will be marking on the two panels next to the face (the sides). Depending on the size of the plush this placement may change. I made the small fox and placed a mark on the side body, 1 inch down from the center of the head. If you were making the larger size your distance might be bigger. This will be the highest point of the ear. You may want to hold your ear pieces up to the body and decide where you like them positioned.



STEP 47

Draw a box for the ear placement. The box should be about 3/8 inch to 1/2 inch wide and from 2 to 2 1/2 inches long. I ended up adjusting my box to be 3/8 x 2 1/4 inches for the small plush (1/2 x 2 3/8 for large plush). Take the time to make sure your box is centered and straight. This will be your guideline for sewing. (If you don't want to do this with a marking tool you can use pins or basting stitches. See Step 75.)



STEP 48

Turn your ear right side out and fill with just a little bit of polyfil. You don't want it to be bulging or round, you just want to give it a little filling so it doesn't look or feel empty.



STEP 49

Double thread your needle. While it is not required, it is often helpful to wax your thread before hand sewing to prevent tangles.

Starting from the inside of the ear, about 1/4 inch or 3/16 inch from the side seam, and on your basting stitch line (1/4 inch from the bottom) pull your thread from inside to outside. This will align with one of the corners of your drawn box.



STEP 50

Find the corner of the box that aligns with where your ear should be placed.

Do a small stitch through the body at that corner.



STEP 51

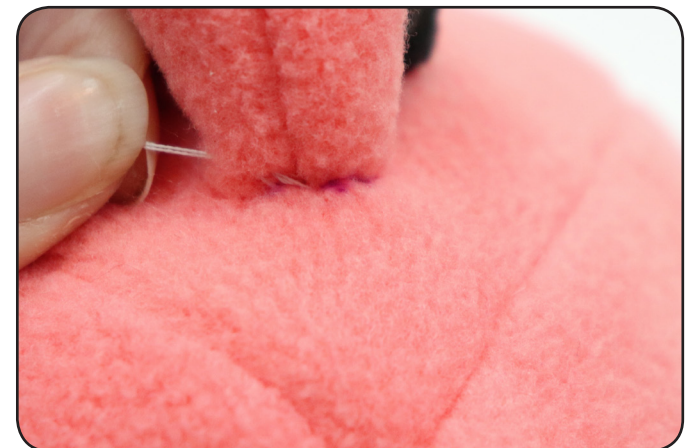
Next do a stitch on the ear starting right above where your other stitch ended. The stitch should be at about the same height on the ear as your previous stitch, following the basting stitch guidelines.

Your stitches will begin to look like the rungs of a ladder.



STEP 52

Pull your threads, tucking in the seam allowance, so the ear touches the body. Raw edges should be hidden. Continue this process sewing all of the way around the box to attach the ear. Do one or two stitches, pull the thread, and tuck in the seam allowance. Follow your basting stitches on the ear as a guide for where to stitch. Make sure the side seams of the ear end up at the center top and center bottom of the box. Take your time and keep your stitches small.



STEP 53

Be sure to hide your knot as you did when stitching the body closed.



STEP 54

Your ear should be attached!



STEP 55

Repeat this process for the other ear.



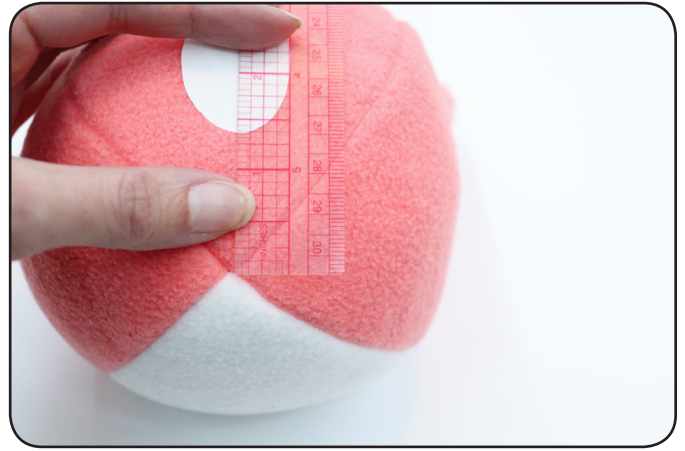
STEP 56

It's time to attach the tail!
Cut out the tail stitching guide pattern piece.
Place it where you would like the tail to be.



STEP 57

On the back panel, I placed the tail $1\frac{3}{8}$ inches up from the center bottom on the small plush and $1\frac{1}{2}$ inches up on the large plush.



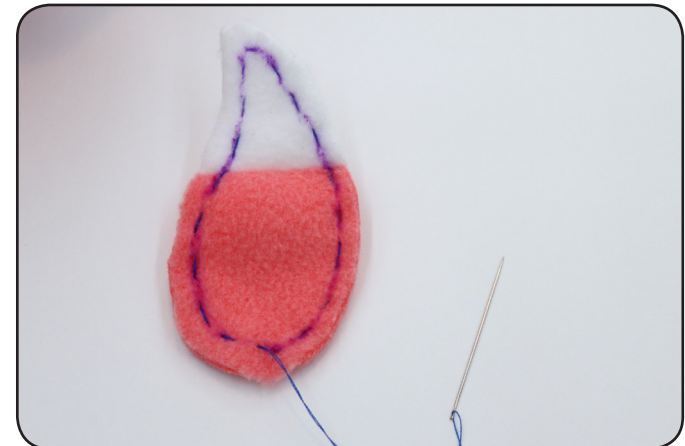
STEP 58

Trace your pattern piece onto the body.
(If you don't want to use a marker you can do this with pins or basting stitches. See Step 75.)



STEP 59

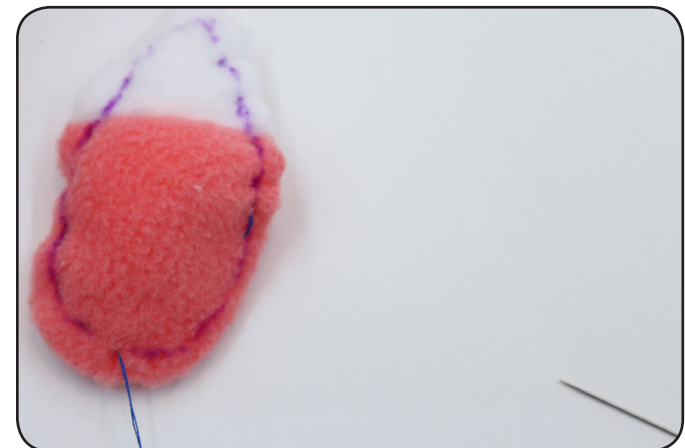
Basting stitch around the tail, $\frac{1}{4}$ inch from the edge.



STEP 60

Pull your threads just a bit, so that the tail is not lying flat, but is just a bit like a bowl. It should be slightly curved.

Doing this will make the tail pop out just a little more after it is sewn than if it was flat.



STEP 61

Stitch the tail to the body like you did the ear.
I like to start at the bottom center.
When you get to the top point take small stitches and carefully tuck in the seam allowance as you go.
Stop an inch before the end.



STEP 62

Leave an opening about 1 inch long.



STEP 63

Fill the tail with just a little bit of polyfil.



STEP 64

Finish slip stitching the tail closed. Hide the knot.
Your tail should now be attached!

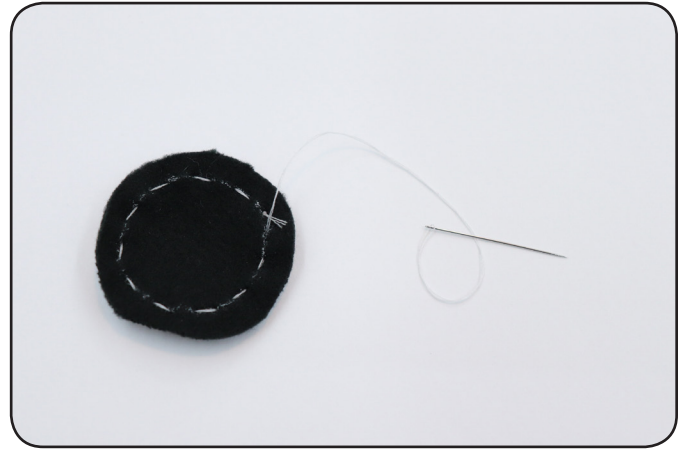


STEP 65

Time to work on the feet and arms! I chose to use the circular arms that are the same as the feet. If you chose the long arms attach them to the body in a manner similar to the tail.

Thread a hand needle and knot your thread. Basting stitch by hand around the circle on the drawn line.

Do not tie a knot when finished, keep the thread and needle attached.



STEP 66

Pull the thread from the basting stitches so that the fabric curls up and it looks like a little draw-string bag.



STEP 67

Place a tiny bit of polyfill inside.



STEP 68

Pull the threads tight, tucking the seam allowance inside, and closing the opening.

It should look like a little button or the top of a mushroom.

If you are having a hard time getting the seam allowance to tuck in side, you may have too much polyfil inside.



STEP 69

Sometimes if my fabric is having a hard time staying in place I will basting stitch around the back of the circle a bit more, and pull the strings again.

Once the back is all enclosed with seam allowances tucked inside, tie your knot.



STEP 70

Repeat for the other circles.

Try to keep the circles about the same size.

I made 4. Two for arms and two for legs.



STEP 71

Determine where you want to place the feet and arms.

I like to pin them in place with a long straight pin.



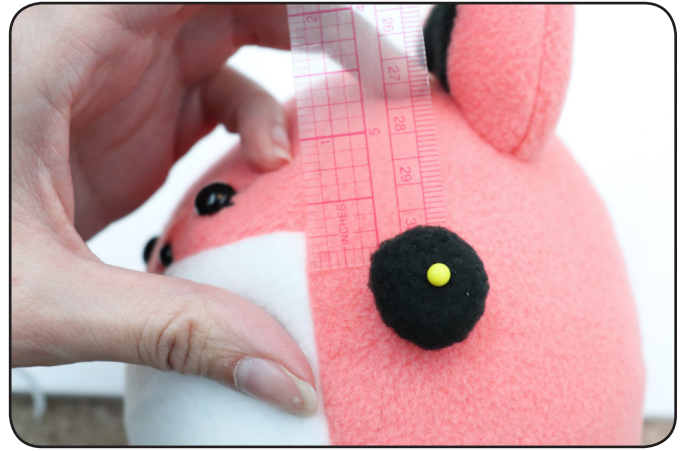
STEP 72

I placed the feet 1½ inches from the bottom center on both sides.



STEP 73

I placed the arms so that the top of the circle was at the same height as the top of the white belly panel and the side of the circle was about $\frac{3}{8}$ inch from the white belly panel on the small plush and $\frac{3}{4}$ inch away in the large plush..



STEP 74

As with the tail pieces, you can use the pattern piece stitch guide for the feet (dotted line) to trace a guideline for sewing. I like to fold my pattern piece into quarters, stick a pin through the very center, and then align it on the plush where I want it. For the feet, the fold lines help me ensure half is on the white and half is on the colored fabric.

Trace the circle where you want the feet. Remember you can do this with pins or thread if you don't want to use a marking tool. See STEP 75.



STEP 75

This is an example of what marking with pins could look like. I used pins here to mark the arm placement and where the bottom of the feet would go. Pins are a bit more difficult as your thread can get caught on them when sewing, but using marking tools always runs the risk of it being seen on the final project. Basting the placement with thread is probably the safest method, but also the most time consuming, which is why I usually trace my placement with a vanishing marker.



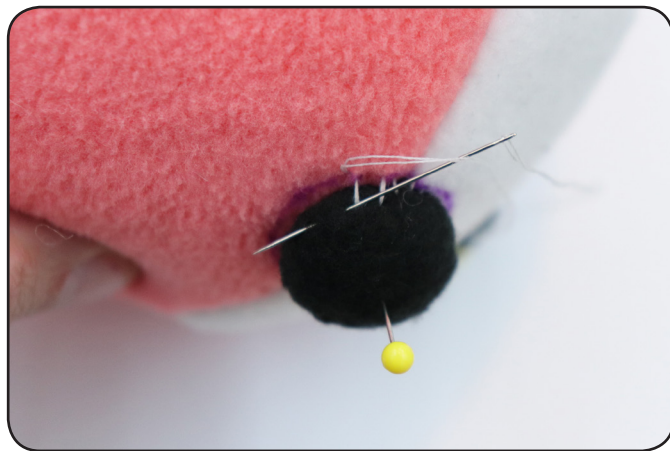
STEP 76

After I mark the placement again I like to use a single pin to hold the circular pieces in place.



STEP 77

Stitch in place with a slip stitch (ladder stitch). I like to extend the stitches to about halfway up the side of the circular foot. Go slow and keep your stitches small if possible. Be sure to hide your knot when you are done.



STEP 78

Repeat until the arms and legs are all in place.



STEP 79

Optional:

Add a flower to the top of the plush.
Cut out the flower pattern piece using paper scissors.
Trace the pattern piece onto a piece of scrap felt and cut it out.
Thread a hand needle and knot the thread.



STEP 80

By hand, basting stitch along the straight bottom edge. Do not tie a knot when finished, keep the thread and needle attached.



STEP 80

Pull the thread so the basting stitches are pulled tight.

Tie a knot.



STEP 81

If desired, stitch a button to the center.



STEP 82

Flip stitch the flower in place near the ear. Tie and hide the knot. Add blush if desired.



Congratulations!
You have finished your fox plush!

Patterns and instructions are copyrighted and are for personal use only.
You are welcome to use these instructions and the pattern as needed in the classroom or for instructional purposes.
Please do not post a copy of this tutorial online.
If you enjoyed this tutorial please refer others to learncreatesew.com. Happy sewing! Thank you!