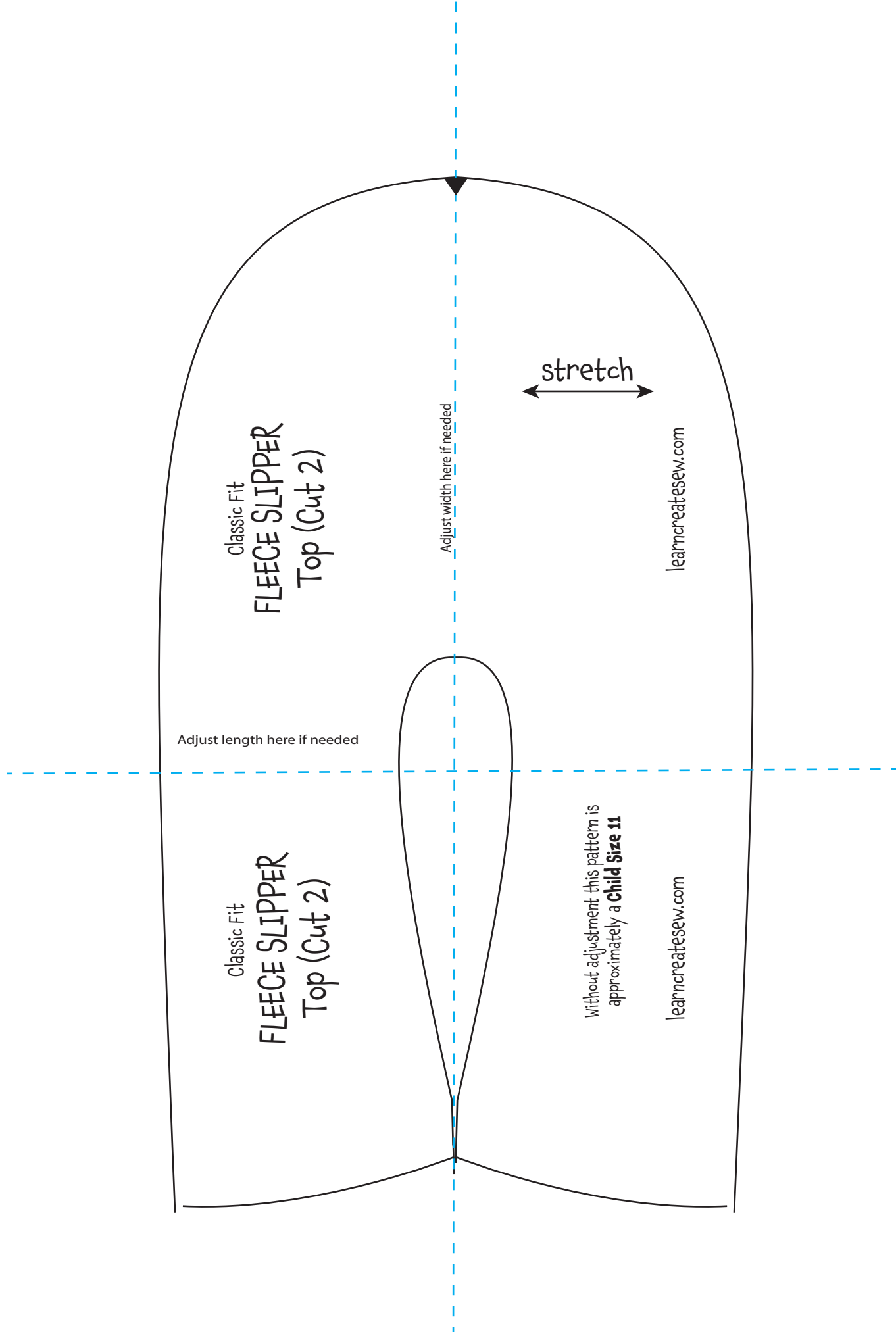


Seam Allowance - 3/8 inch



# Child Size 11 Classic Fleece Slipper by learncreatesew

## BINDING STRIP

The binding strip is a long skinny rectangle of fleece with the stretch running lengthwise



The rectangle should be 1.75 inches wide

Use the following to determine the length of the binding strip needed.

### **If you are using the exact Pattern size:**

Use a 9.25 inch binding strip

### **If you increased the size of the pattern:**

$9.25 + \text{Width Change} + 2(\text{Length Change}) = \text{Binding Length}$

$9.25 + \underline{\hspace{2cm}} + 2(\underline{\hspace{2cm}}) = \underline{\hspace{2cm}}$

### **If you decreased the size of the pattern:**

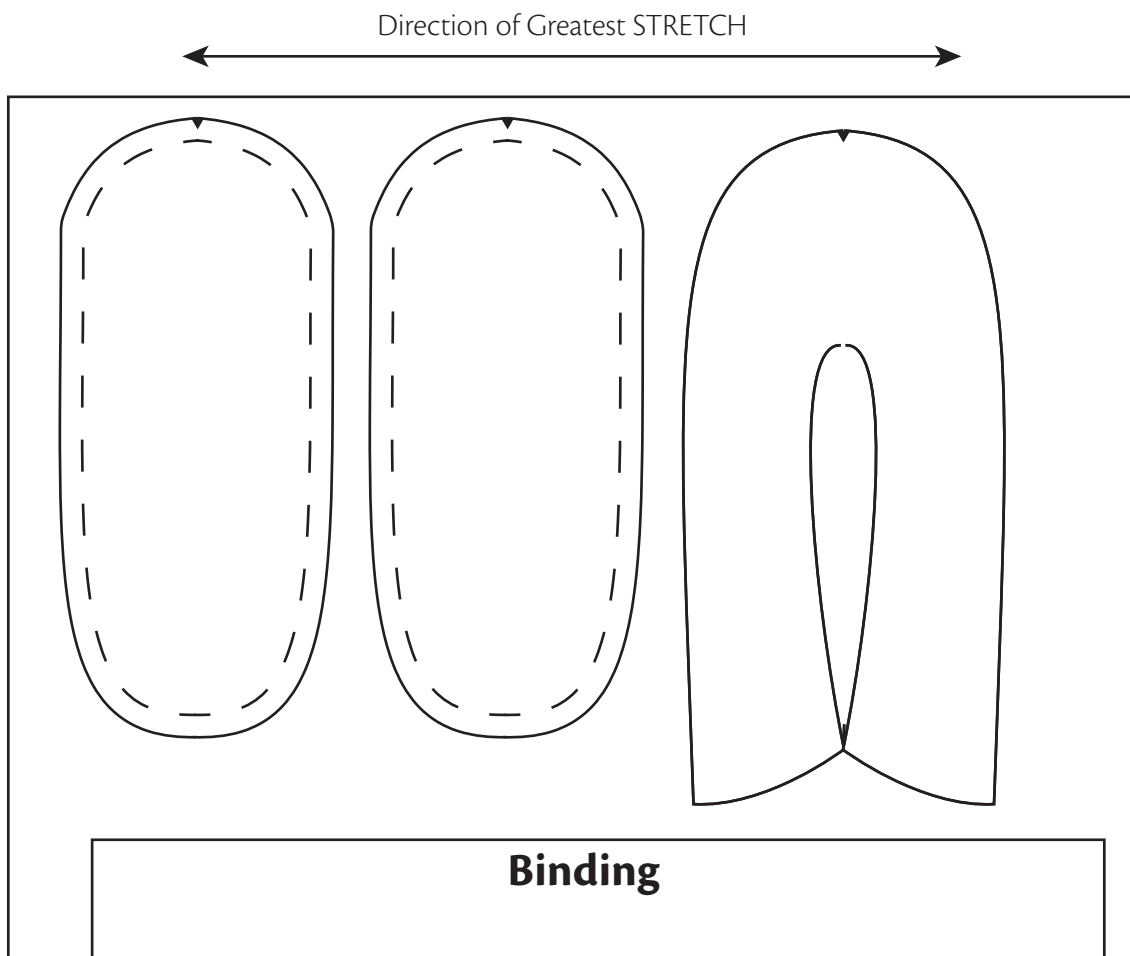
$9.25 - \text{Width Change} - 2(\text{Length Change}) = \text{Binding Length}$

$9.25 - \underline{\hspace{2cm}} - 2(\underline{\hspace{2cm}}) = \underline{\hspace{2cm}}$

# Fleece Slipper by learncreatesew

## Cut Layout

Be sure to adjust the size of your pattern before cutting if needed.  
Below is one possible cut layout.



**Cut with 2 Layers of Fabric OR Cut twice**