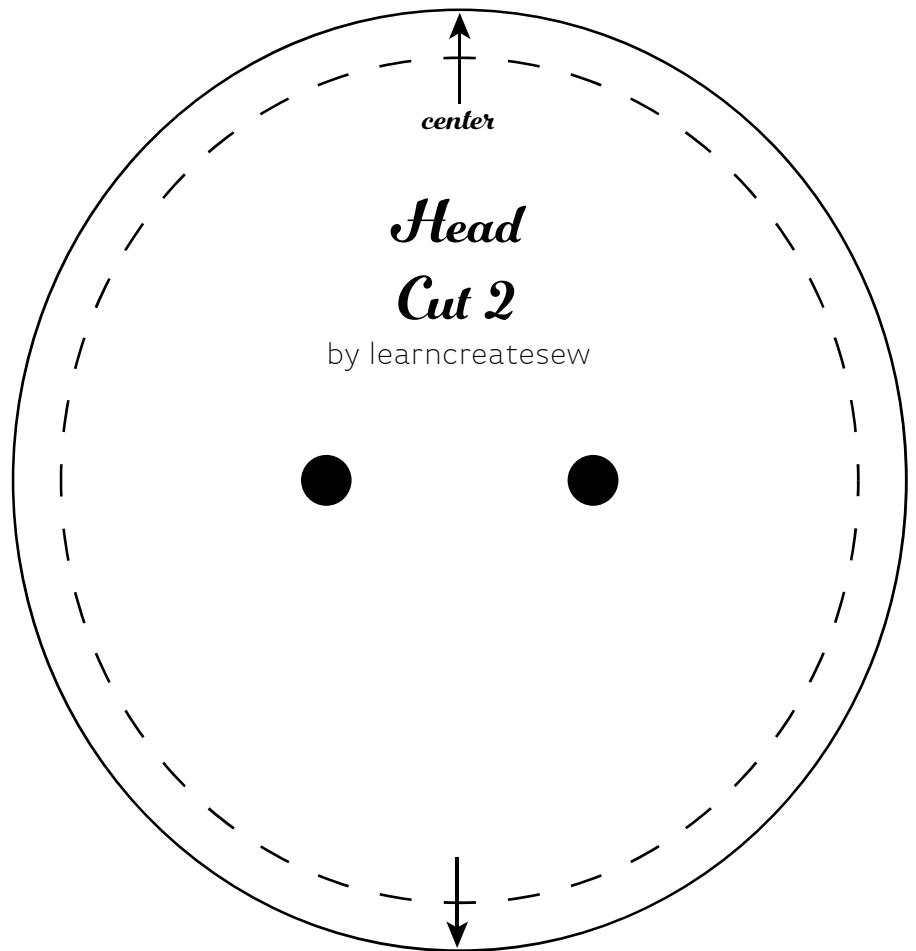


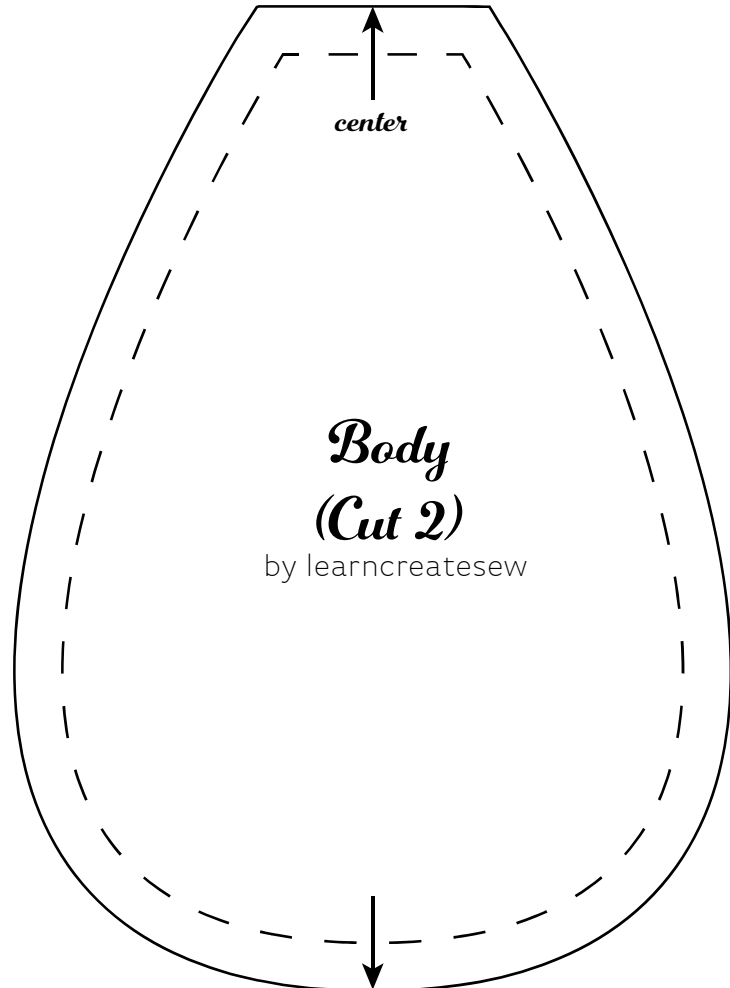
Rag Doll

Pattern

by learncreatesew

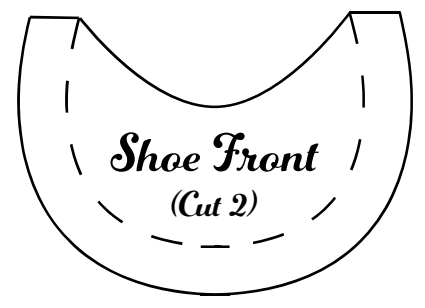


For the arms,
cut 2 and 2 reversed
as indicated in the cut layout
so you have a left & right arm.

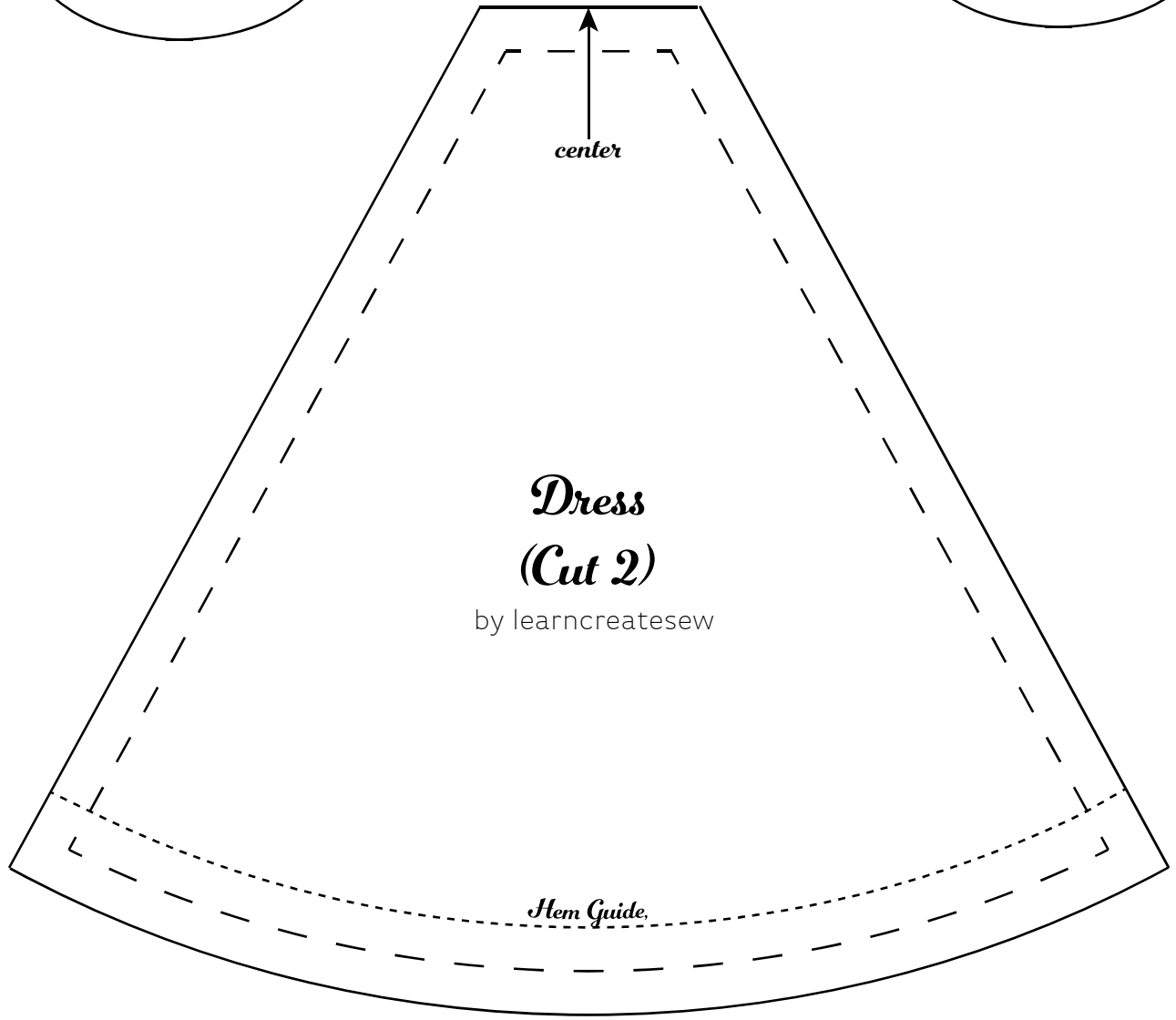




Shoe Back
(Cut 2)



Shoe Front
(Cut 2)

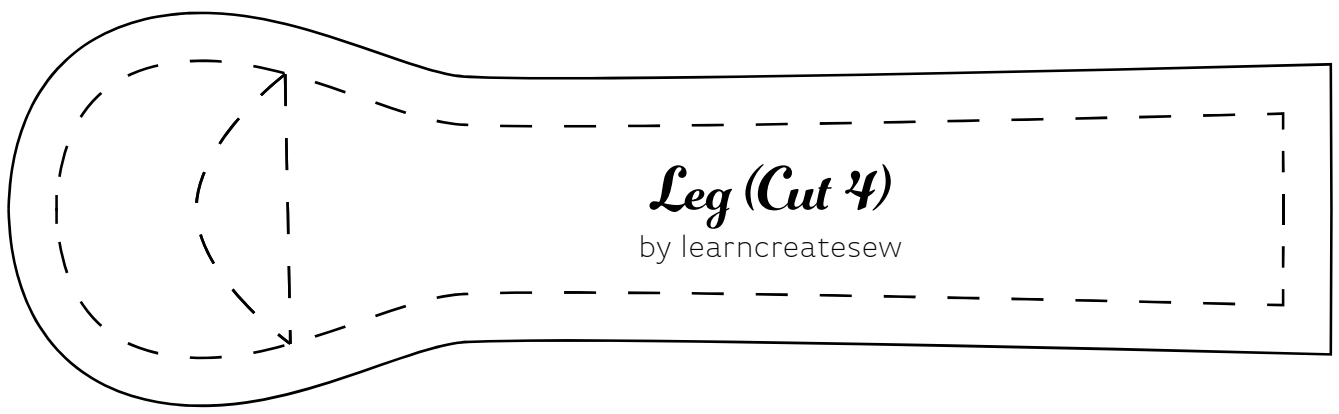


center

Dress
(Cut 2)

by learncreatesew

Hem Guide.

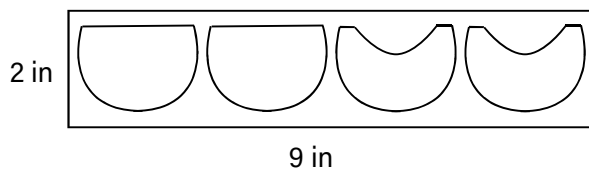
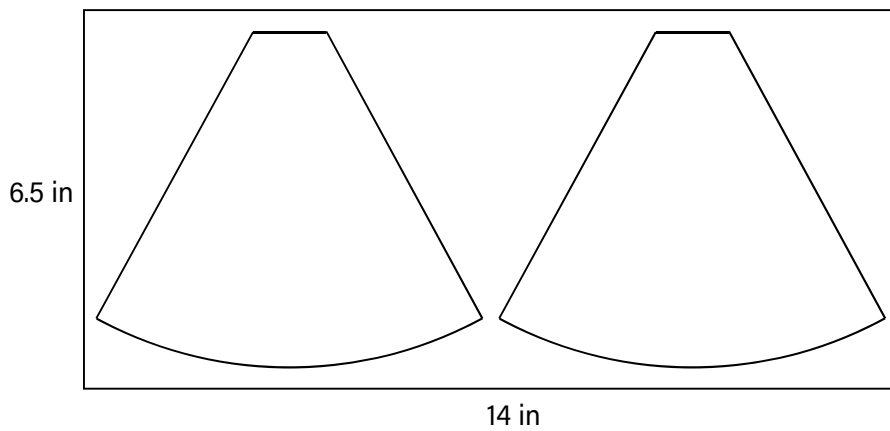
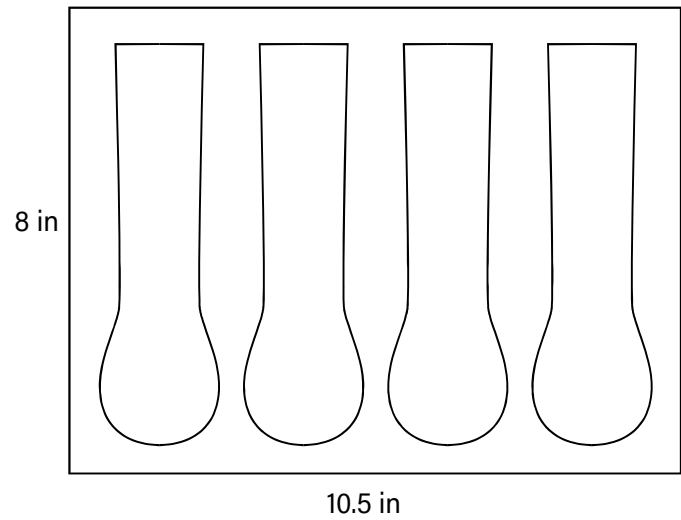
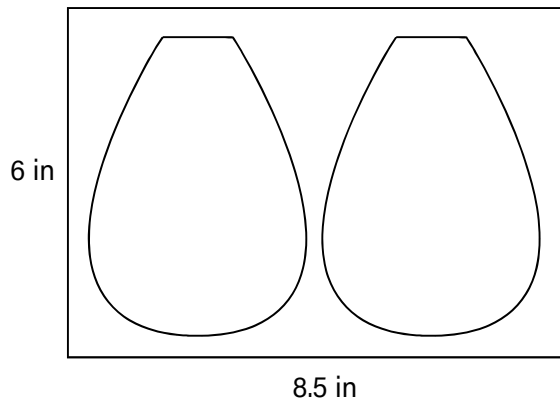
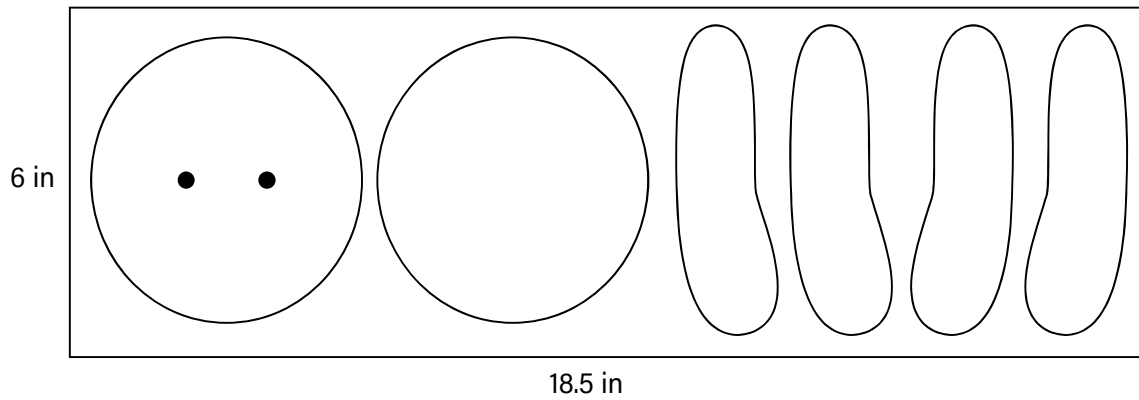


Leg (Cut 4)

by learncreatesew

Rag Doll Cut Layouts

by learncreatesew



Rag Doll
Half Page Weft Guides
by learncreatesew

Sew Line

cut here

Sew Line

*Rag Doll
Quarter Page Weft Guides*

by learncreatesew

Sew Line

Sew Line

cut here

cut here

Sew Line

Sew Line