

Classic Fit
FLEECE SLIPPER
Top (Cut 2)

Adjust width here if needed

stretch

learncreatesew.com

Adjust length here if needed

Tape Pieces A & B together here

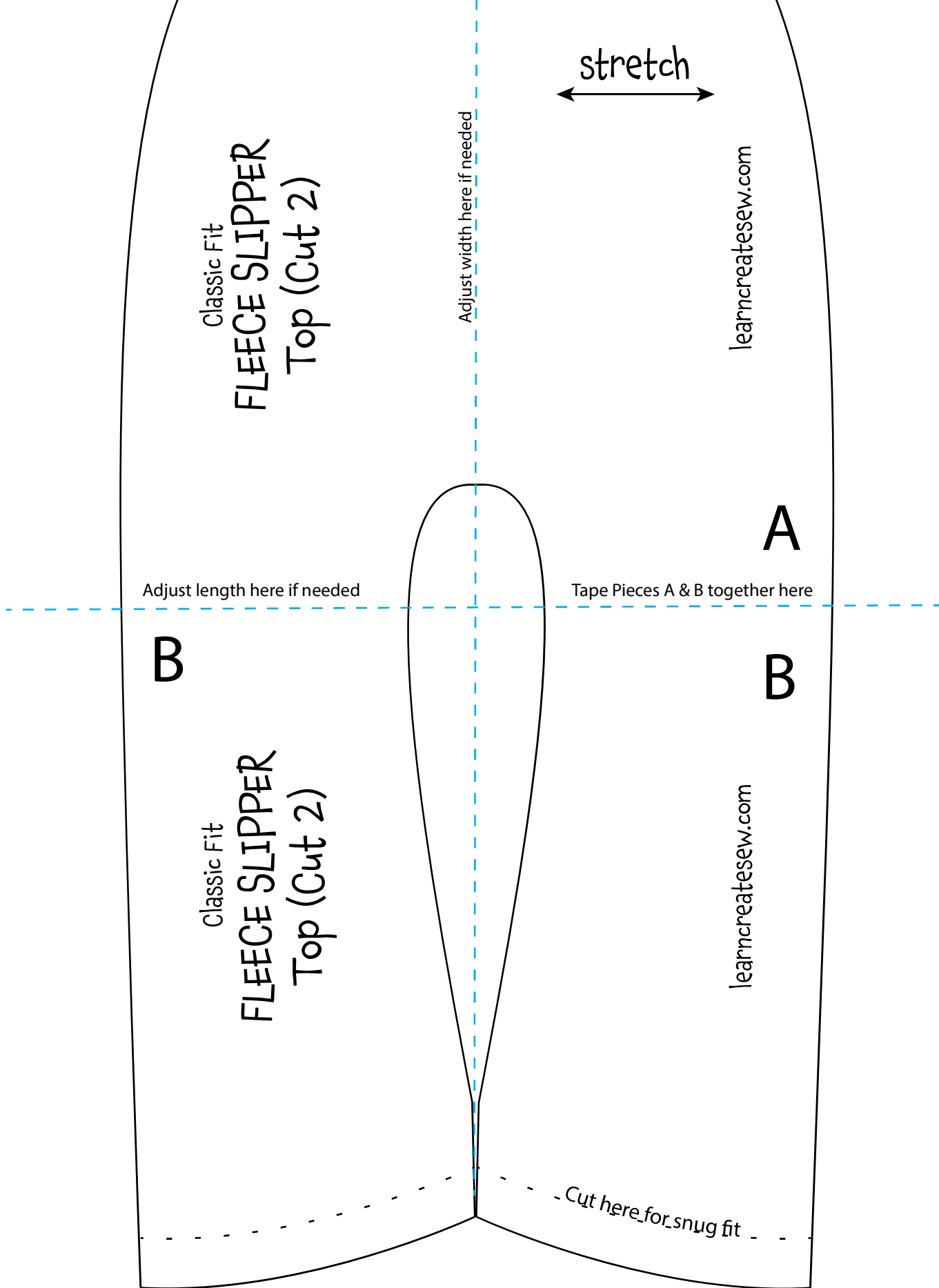
B

A

B

Classic Fit
FLEECE SLIPPER
Top (Cut 2)

learncreatesew.com

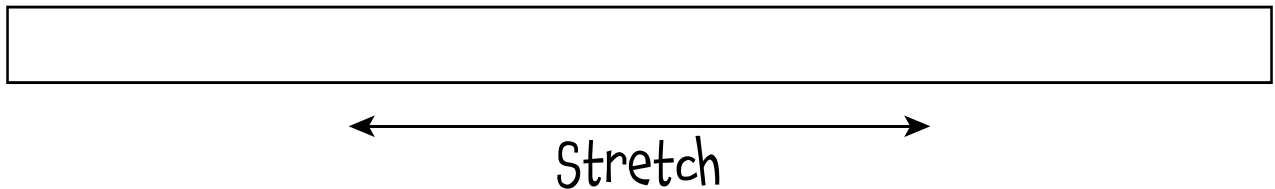


Snug Fit slippers fit more closely around the foot and feel more like socks.

Snug Fit Classic Fleece Slipper by learncreatesew

BINDING STRIP

The binding strip is a long skinny rectangle of fleece with the stretch running lengthwise



The rectangle should be 1.75 inches wide

Use the following to determine the length of the binding strip needed.

If you are using the exact Pattern size:

Use a 12 inch binding strip

If you increased the size of the pattern:

$12 + \text{Width Change} + 2(\text{Length Change}) = \text{Binding Length}$

$12 + \underline{\hspace{2cm}} + 2(\underline{\hspace{2cm}}) = \underline{\hspace{2cm}}$

If you decreased the size of the pattern:

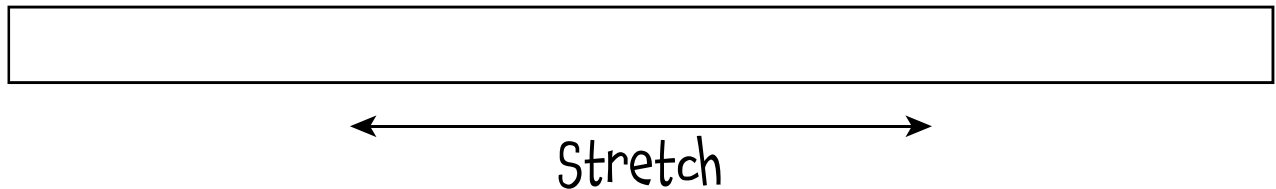
$12 - \text{Width Change} - 2(\text{Length Change}) = \text{Binding Length}$

$12 - \underline{\hspace{2cm}} - 2(\underline{\hspace{2cm}}) = \underline{\hspace{2cm}}$

Classic Fit Fleece Slipper by learncreatesew

BINDING STRIP

The binding strip is a long skinny rectangle of fleece with the stretch running lengthwise



The rectangle should be 1.75 inches wide

Use the following to determine the length of the binding strip needed.

If you are using the exact Pattern size:

Use a 12.75 inch binding strip

If you increased the size of the pattern:

$12.75 + \text{Width Change} + 2(\text{Length Change}) = \text{Binding Length}$

$12.75 + \underline{\hspace{2cm}} + 2(\underline{\hspace{2cm}}) = \underline{\hspace{2cm}}$

If you decreased the size of the pattern:

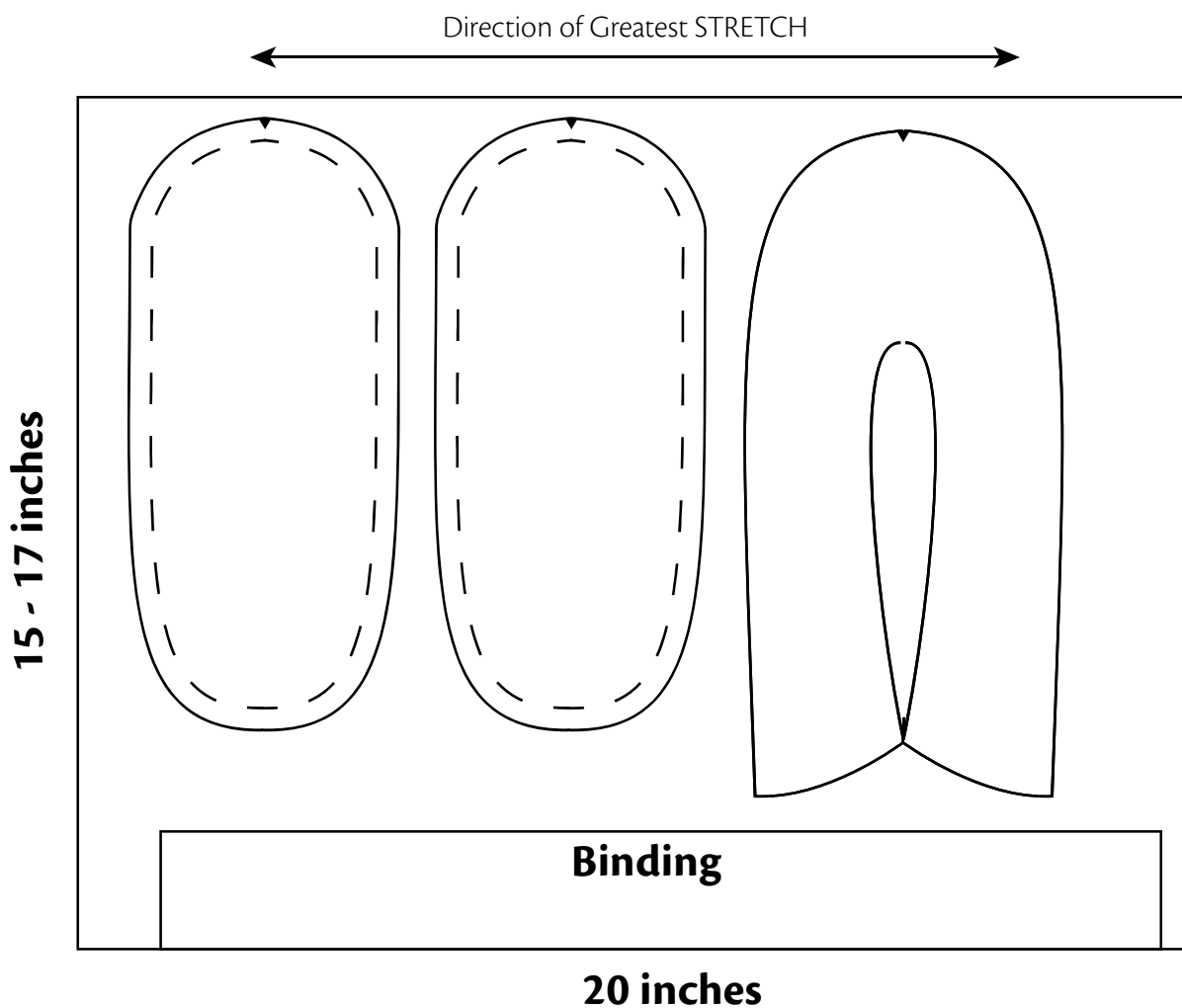
$12.75 - \text{Width Change} - 2(\text{Length Change}) = \text{Binding Length}$

$12.75 - \underline{\hspace{2cm}} - 2(\underline{\hspace{2cm}}) = \underline{\hspace{2cm}}$

Fleece Slipper by learncreatesew

Cut Layout

Be sure to adjust the size of your pattern before cutting if needed.
Below is one possible cut layout.



Cut with 2 Layers of Fabric OR Cut twice