

4 in 1: Winter Wonder Mittens

Cell Phone & Touch Screen Friendly

When cutting your mittens remember that you need to create a matched pair.

The Left and Right gloves will be mirror images of each other.

As a result, when you "Cut 2" be sure to cut through 2 layers with right sides touching.

However, when cutting through two layers of fleece, it can be difficult to be exact..

For more precise cutting you can cut through a single layer of fabric.

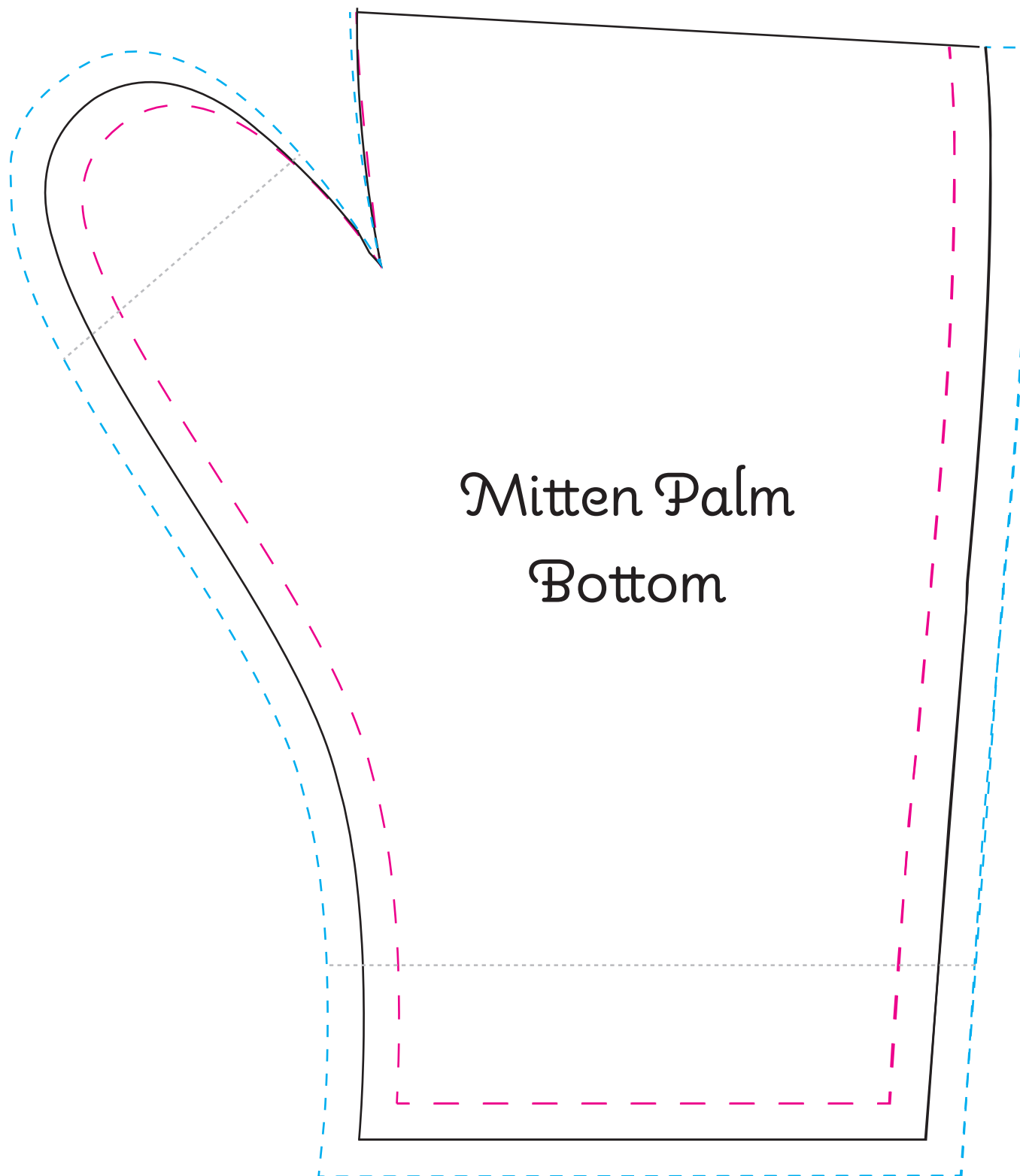
If you choose to do so, when you "Cut 2" cut 1 and 1 reversed.

This means to cut one with the pattern facing right side up,
and the other with the pattern facing right side down.

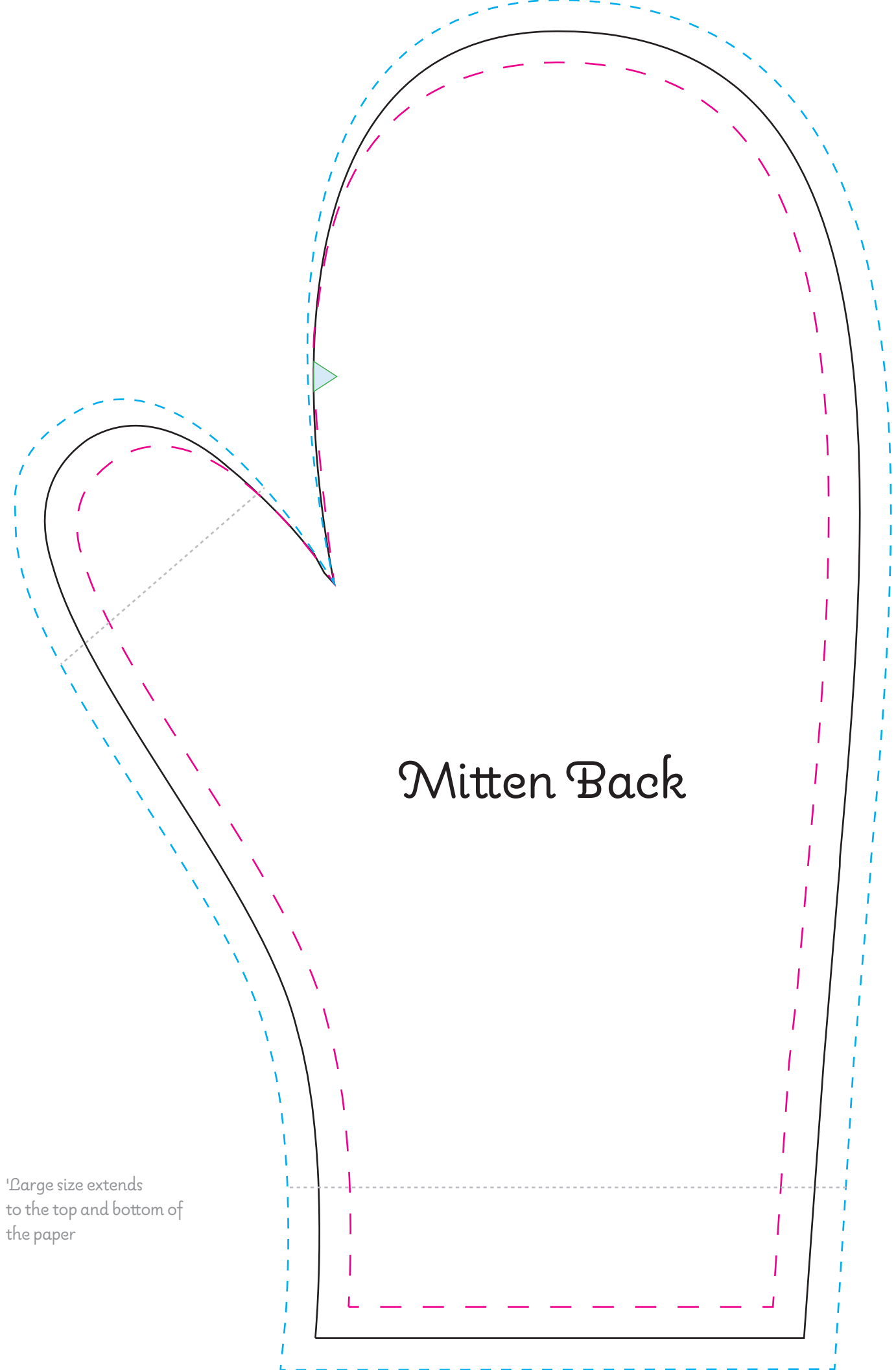
1
inch
square

4 in 1 Pattern

Skill Level: Easy



Mitten Back



'Large size extends
to the top and bottom of
the paper