



fleece Santa Hat

Instructions

by LearnCreateSew.com

SUPPLIES:

1/2 yard fleece fabric for hat
1/4 yard fleece fabric for band and ball
Coordinating thread
Polyfill

You can make two hats with this amount of fabric!

TOOLS:

Sewing Machine
Hand Sewing Needles
Pins or clips
Ruler, Gauge or Tape Measure
Marking chalk or pen

Optional:
Walking Foot

WORKING WITH FLEECE:

- Increase your stitch length to 3 - 4 depending on the bulkiness of your fabric. The thicker it is, the longer the stitch length.
- Don't iron. Fleece can melt under the heat. Simply finger press.
- Clips work great to hold together bulky sections
- If you noticed skipped stitches, try using a ball point needle
- A walking foot can work wonders and helps prevent rippling in the fabric.
- Fleece stretches. Try not to pull the fabric when sewing.
- Start stitches \approx 1/4 inch away from the fabric's edge so it isn't caught in the needle plate.

STEP 1

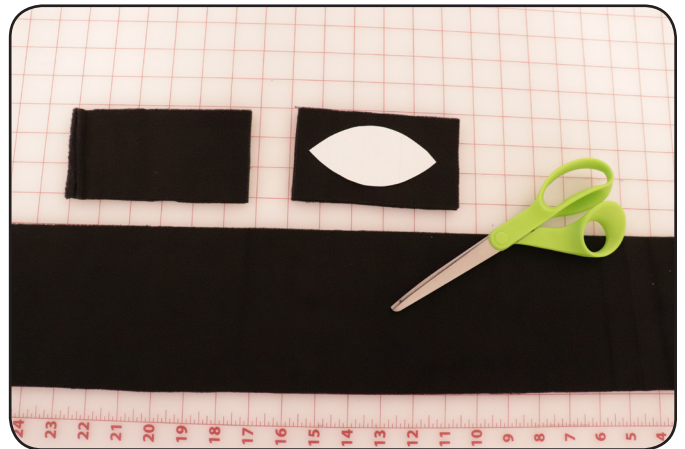
Use your pattern to cut out one main hat piece.



STEP 2

You also need to cut one 4 x 25 inch strip for the hat band.

For the ball, do NOT use the pattern yet. Instead, cut 4 rectangles approximately 3 x 5.5 inch rectangles.

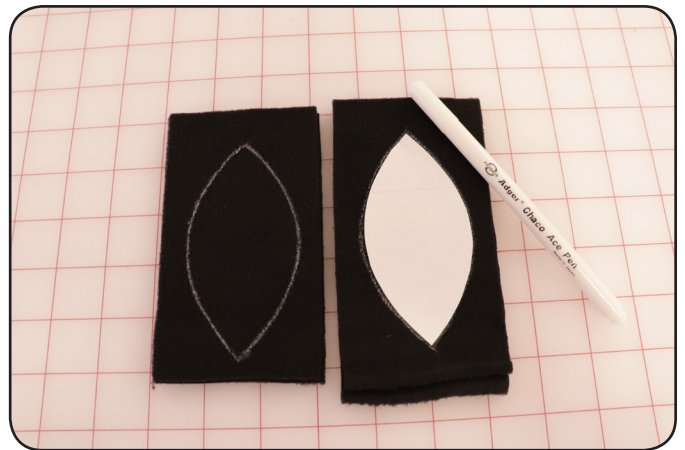


STEP 3

To make the ball, place two of your 3 x 5.5 inch rectangles right sides together.

Trace the pattern piece onto the wrong side of the top rectangle using chalk, or a marking pen. You do want to be quite exact when marking to ensure you get a circular shape for the ball.

Repeat this process for the other two rectangles.



STEP 4

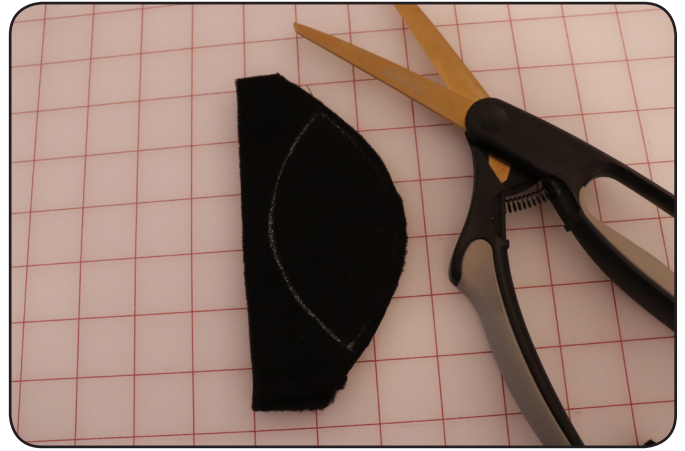
On one set of the ball pieces, sew along ONE side. Start stitching exactly at the top point, and stop stitching exactly at the bottom point.

Don't forget to backstitch.



STEP 5

Along the side that you just stitched, trim the seam allowance to be 1/8 inch.



STEP 6

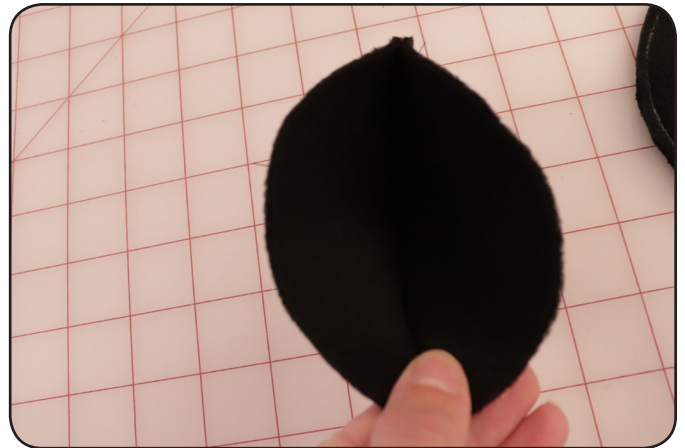
Along the side that you did not stitch, trim the edge to be 1/4 inch away from the drawn line.

Repeat this process with the other set of ball pieces.



STEP 7

Open up one of the stitched ball pieces and place it right side up.



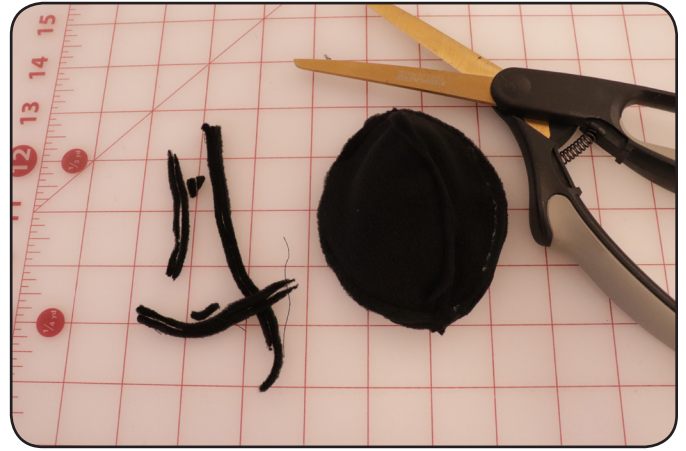
STEP 8

Place the other stitched ball piece directly on top of it with right sides down. (Right side should now be touching.) Align the seam allowances. Pin. Stitch with 1/4 inch seam allowance around the edges. Be sure to leave a 1 inch section open to flip it. It is preferable that the opening not be over a seam. I started sewing at the green pin, and stopped at the red pin.



STEP 9

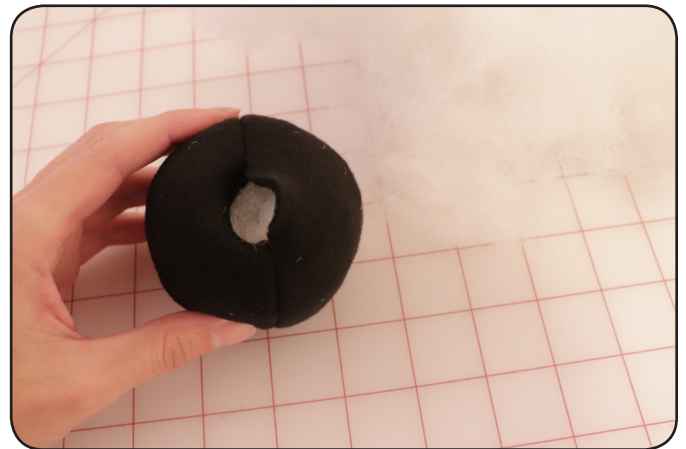
Trim the seam allowances to 1/8 inch.



STEP 10

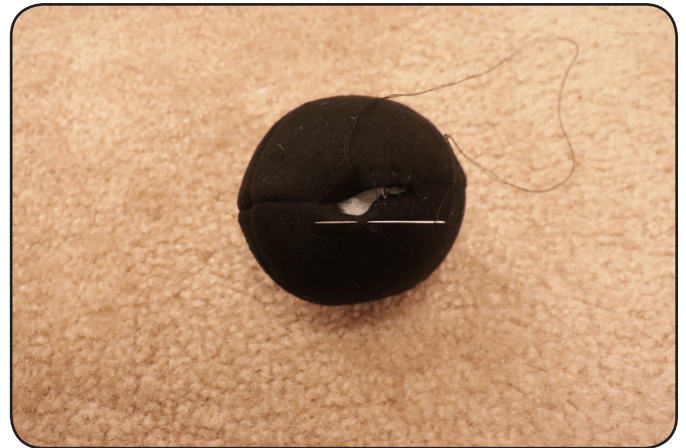
Turn the ball right side out and stuff.

Be sure to fluff your polyfil first!



STEP 11

Slip stitch the ball closed.



STEP 12

Use your hand to shape the ball. Since fleece fabric is stretchy, the ball can sometimes look misshapen when it is first sewn. If you roll and press it in your hands you can usually get it form a nice shape.



STEP 13

Lay your main hat piece right side up.



STEP 14

Fold it in half so that the straight sides line up and right sides are touching.

Stitch along the straight side using a 1/2 inch seam allowance.

Check the fit of the hat. Adjust accordingly if needed.

Note: If you change the size of the hat now, you may need to adjust the size of the band later so that it will fit the hat.



STEP 15

Clip off the tip of the seam allowance at the top of the hat. Do NOT cut the stitches.

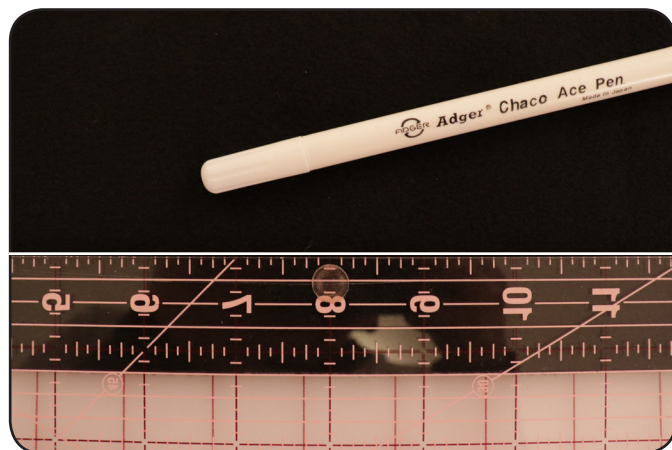
This will help reduce bulk when you turn the hat right side out later.



STEP 16

Lay your 4 x 25 inch band rectangle right side down.

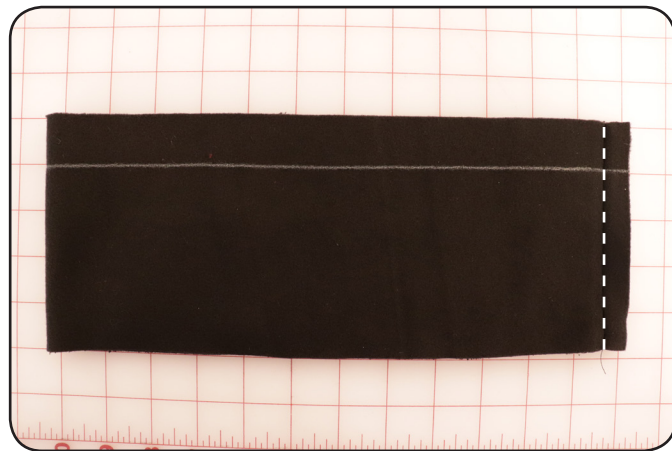
On the wrong side of the fabric draw a line 1 1/4 inches away from the edge along one of the long sides.



STEP 17

Fold the band fabric in half with right sides together creating a 4 x 12.5 inch rectangle.

Sew along the short side using a 1/2 inch seam allowance.



STEP 18

Finger press the seam open so it lies flat. Just press with your fingers, not with an iron.

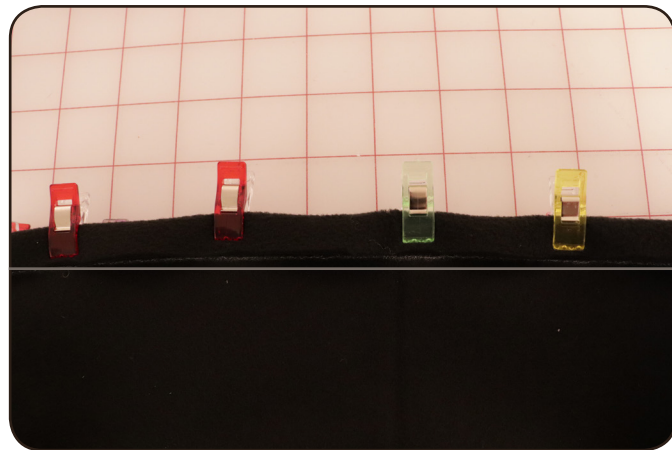


STEP 19

The raw edge that is next to your drawn line will be the top of the band. Fold the raw edge over, toward the wrong side of the fabric, so that it touches your drawn line. You will be folding over approximately 5/8 of an inch.

I like to hold this in place with clips rather than pins.

Stitch in place using a stitch length of 4 and a 1/2 inch seam allowance.



STEP 20

Turn your main hat piece so it is **WRONG** side out. Also, have your band **WRONG** side out. Slide the hat inside the band. The stitched edge of the band should be at the top.

The **Wrong side of the Hat** should now be touching the **Right side of the band**.



STEP 21

Slide the band so that the raw edge of the band aligns with the raw edge of the hat. Line up the seams and make sure they are open. Pin.

Stitch in place with a 1/2 inch seam allowance. I used stitch length 3.5. (If you need the hat to stretch you could use a zig zag stitch. I used a regular straight stitch.)



STEP 22

Turn your hat right side out.

It might look kind of funny at this point since you will see the raw edges of your seam. This is okay! They will be hidden later.



STEP 23

Fold the band in place.

When you fold the band up you should now see the right side of the band. Fold carefully so that you see only band fabric, and no hat fabric, at the bottom of the band section.

Clip in place. Stitch around the bottom edge with a 1/2 inch seam allowance and a stitch length of 4 or 4.5. This can be really thick.

Stitch slowly! (Again, use a zig zag if you need stretch.)



STEP 24

Slip stitch the ball to the tip of the hat. You may want to make sure the slip stitch section where you filled the ball is pointing toward the back of the hat.

You want to make sure to stitch this very securely. See the next step for some tips.



STEP 25

I like to slip stitch in a circle around the tip. If you are worried that you won't be able to sew in a nice circle, you can draw it on your ball first. Draw a circle with about a 1/2 inch diameter (or trace a dime) and use that as a stitching guide.

I slip stitched around the circle 2 to 3 times using small stitches. You definitely don't want it to fall off!



STEP 26

Your hat is now finished!



STEP 27

Enjoy the Christmas Cheer!



Patterns and tutorial are copyrighted and are for personal use only.
Please do not post this pattern or tutorial online. Use for personal crafting enjoyment only. Thank you!